

12 Keats Close,

Widnes,

Cheshire,

WA8 7EX

£220,000

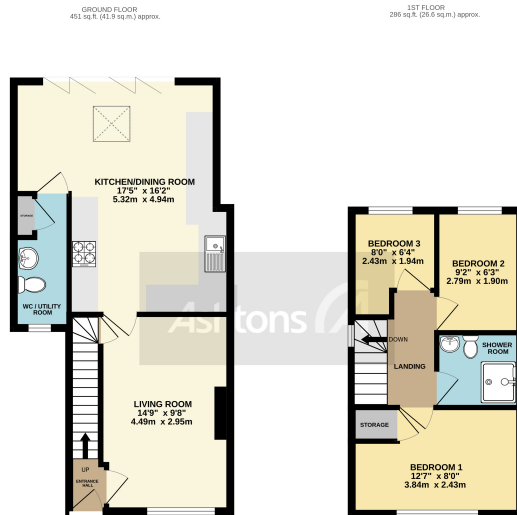


The heart of this home lies within its impeccable kitchen, expertly designed for both functionality and beauty. The modern fittings and impressive craftsmanship create a culinary haven that will delight any aspiring chef. Equipped with top-of-the-line appliances and abundant storage, the kitchen becomes the perfect gathering spot for family and friends.

 x 3  x 2

[See more of this house at ashtons.net](https://www.ashtons.net)





TOTAL FLOOR AREA: 737 sq. ft. (68.5 sq. m.) approx.
 While every effort has been made to ensure the accuracy of the figures contained here, measurements of these areas are based on the best available information and are not intended to be used as a basis for any legal or financial transaction. The actual areas and dimensions shown here are not intended to be used as a basis for any legal or financial transaction. Please refer to the actual floor plan for more details.
 www.ashtons.net

The heart of this home lies within its impeccable kitchen, expertly designed for both functionality and beauty. The modern fittings and impressive craftsmanship create a culinary haven that will delight any aspiring chef. Equipped with top-of-the-line appliances and abundant storage, the kitchen becomes the perfect gathering spot for family and friends.

Stay cozy year-round with the indulgent underfloor heating system, providing warmth and comfort whilst natural light floods the interior, thanks to the charming Velux sky light that graces the ceilings of this exceptional open plan kitchen diner. Invite in the beauty of the great outdoors with the impressive tri-fold's that seamlessly connect the interior living space to the captivating garden. Whether you are hosting a summer gathering or simply enjoying a peaceful moment alone, these doors create a harmonious flow between the inside and outside, allowing you to relish in the beauty of nature.



www.ashtons.net



Fixtures and fittings: A list of the fitted carpets, curtains, light fittings and other items fixed to the property which are included in the sale (or may be available by separate negotiation) will be provided by the Seller's Solicitors. **Important Notice:** 1. Particulars: These particulars are not an offer or contract, nor part of one. You should not rely on statements by Ashtons in the particulars or by word of mouth or in writing ("information") as being factually accurate about the property, its condition or its value. Neither Ashtons nor any joint agent has any authority to make any representations about the property, and accordingly any information given is entirely without responsibility on the part of the agents, seller(s) or lessor(s). 2. Photos, Videos etc: The photographs, property videos and virtual viewings etc. show only certain parts of the property as they appeared at the time they were taken. Areas, measurements and distances given are approximate only. 3. Regulations etc: Any reference to alterations to, or use of, any part of the property does not mean that any necessary planning, building regulations or other consent has been obtained. A buyer or lessee must find out by inspection or in other ways that these matters have been properly dealt with and that all information is correct. 4. To find out how we process Personal Data, please refer to our Group Privacy Statement and other notices at <https://www.ashtons.net/privacy-policy/>