



Windlass House, Traction Lane, Bedford, Bedfordshire MK42 9BH



WALDENS
ESTATE AGENTS

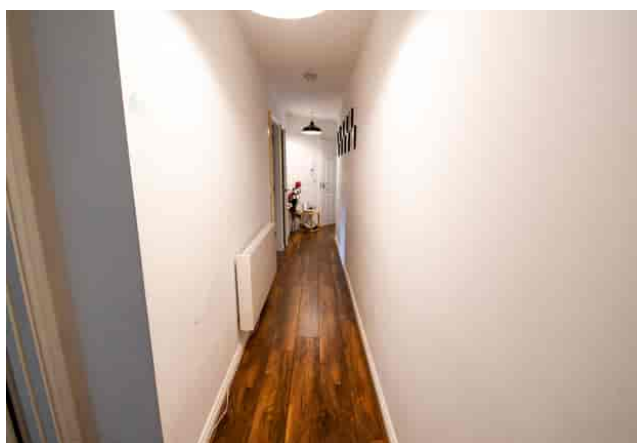
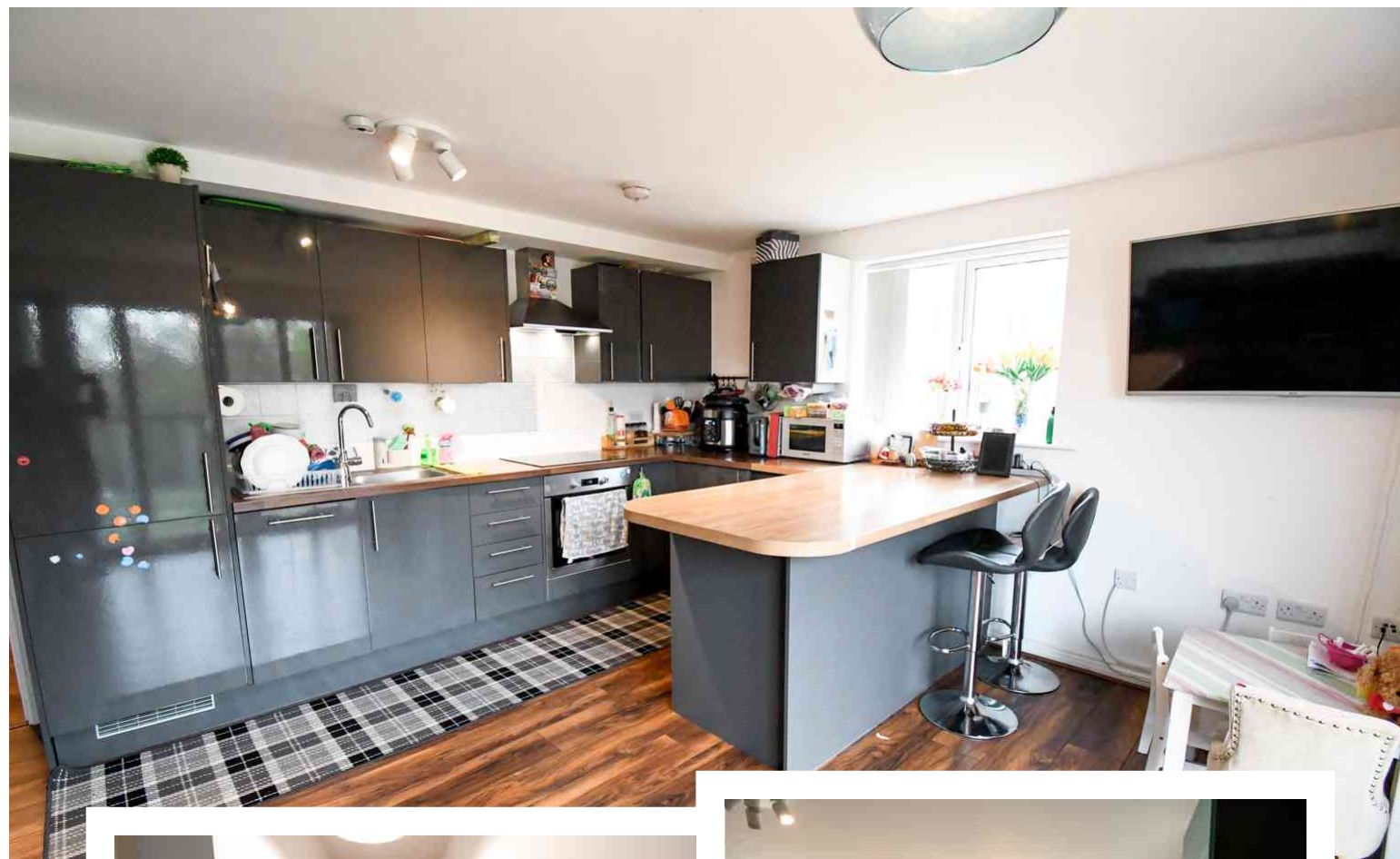
Windlass House
Traction Lane
Bedford
Bedfordshire
MK42 9BH

Guide Price £190,000

Modern Ground Floor Apartment with two DOUBLE bedrooms and the main with a generous sized en-suite shower room. Balcony with river views. Walking Distance To Bedford Station and Hospital

- Two Double Bedroom Apartment
- Walking Distance To Train Station
- Secure Gated Access to Parking
- En-Suite to Main Bedroom
- Fully Fitted Kitchen With Built In Appliances
- Balcony with River Views

- Council Tax Band C
- Energy Efficiency Rating



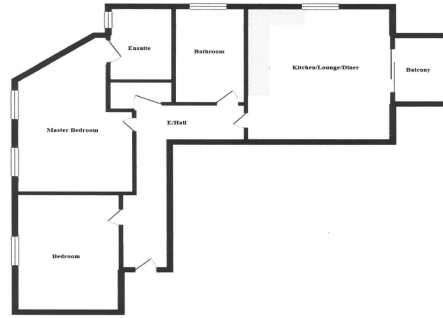
Set close to the river and within walking distance of the hospital and the Bedford Train Station.



Modern built ground floor two bedroom apartment. The hallway has doors leading to all rooms. The open plan lounge/kitchen has a wonderful outlook of the river. The kitchen area is fully fitted with appliances and a breakfast bar which gives the defines the lounge area and kitchen. Sliding doors lead out onto the balcony. (15'6 x 13' 4.72m x 3.96m) The main bedroom has a good sized en-suite shower room, with shower cubicle, low level wc and wash hand basin. (18'4 x 9'10 5.59m x 3.00m) The second bedroom is again a generous size. (14'3 x 8'8" 4.34m x 2.64m) The family bathroom has panelled bath with shower over, low level wc and wash hand basin. Parking is secure and under ground.

Length Lease :994 years remain. Ground Rent £250 Maintenance Charge £2000 (Approx)





01234 856684 | sales@waldens.co.uk | www.waldens.co.uk | 188-190 Bedford Road, Bedford, MK42 8BL

Waldens Estate Agents Limited for themselves and for the vendors or lesser of this property whose agents are to give notice that the particulars are produced in good faith and are set out as a general guide only and do not constitute any part of a contract and no person in the employment of Waldens Estate Agents Limited has any authority to make or give any representation or warranty or relation to this property.