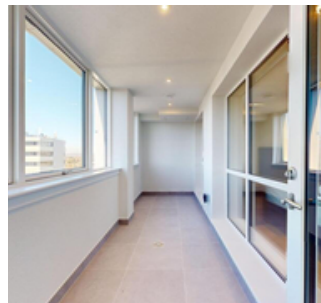




£2,500 PCM

NORTH END ROAD, WEMBLEY, GREATER LONDON. HA9



PROPERTY SUMMARY

Presenting a stunning flat to rent in Wembley Park. The property is furnished on North End Road and comprises of two double bedrooms and one family bathroom. Covering 842 sq. ft. in living space and situated on the fourteenth floor. This modern property comes with big windows and ample storage and benefits from a private balcony or sunroom, as well as abundant natural light throughout.

Further features and amenities include: Open-plan kitchen with dishwasher - Freezer - Washer/Dryer and Lift. The Located just a short walk from Wembley Park Tube Station and only moments away from Wembley Stadium.

Available Now.

0208 201 5454
info@cubesresidential.com