





- Ground Floor Apartment
- Living Room
- Kitchen with Appliances
- Double Bedroom
- Full Bathroom
- Communal Gardens
- Two Parking Spaces

Description

This is a well presented, ground floor apartment, which is located on the popular Moss Farm estate, overlooking the rugby fields. The property features electric heating and PVCu double glazed windows and the accommodation comprises: Entrance area, open plan living room, kitchen with appliances, double bedroom with built-in double wardrobe and full bathroom. Outside there are communal gardens and there are two allocated parking spaces. Available in January, restrictions apply.



Location
Tenure

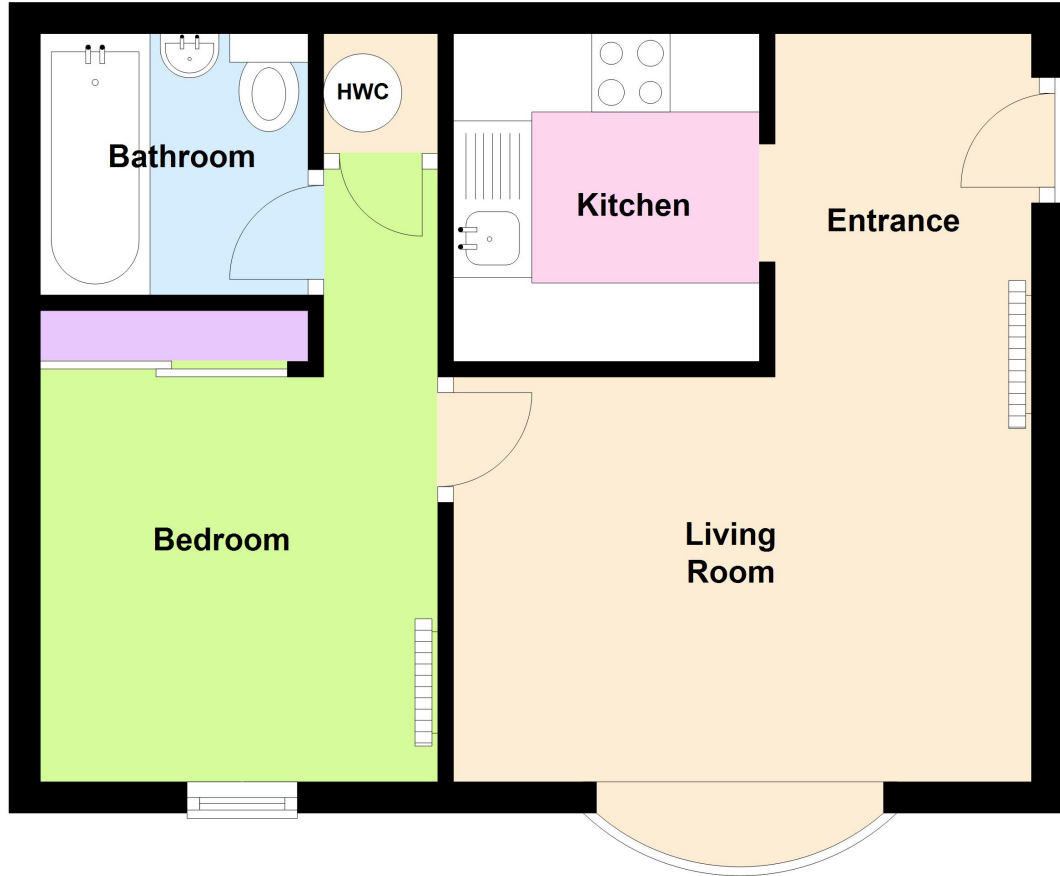
EPC Rating:

Important Notes
Type Here



Ground Floor

Approx. 30.4 sq. metres (327.5 sq. feet)



Total area: approx. 30.4 sq. metres (327.5 sq. feet)