



Flat 15 Ulric House, Waleron Road, FLEET, Hampshire GU51 1GE

£265,000 Leasehold

JIGSAW ESTATES HAMPSHIRE are delighted to present to the market, this well presented, top floor apartment in Elvetham Heath and situated approx. 1 mile of Fleet mainline train station which runs regular services to London. The location also offers excellent car transport links with the M3 only a short distance from the property and is approx. 1.5 miles of fleet town centre.

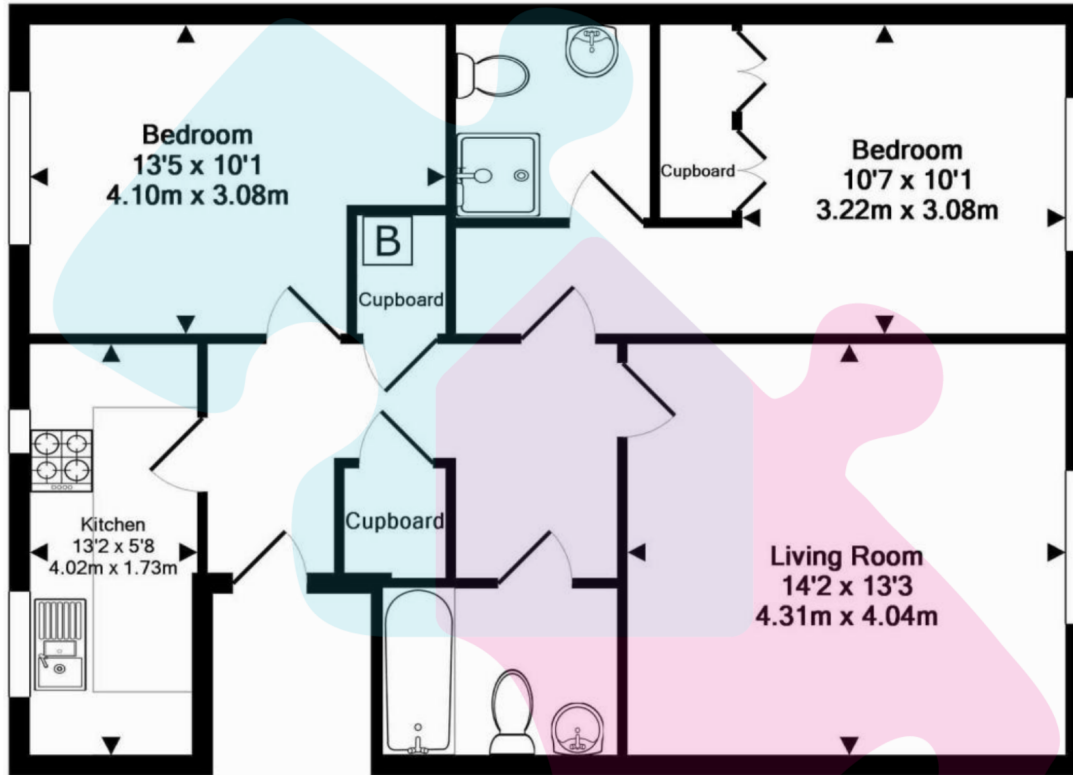
Accommodation comprises; a spacious entrance hall with storage cupboard, a large, spacious living/dining room, a well presented kitchen two generous double bedrooms with an ensuite shower room to the main bedroom and a bathroom. Further benefits include, an allocated parking space as well as visitors parking, bicycle storage sheds, gas central heating and communal gardens.

Leashold information:

- Ground rent £250 per annum



- APPROX. 1 MILE OF FLEET STATION
- TWO DOUBLE BEDROOMS
- SPACIOUS LIVING/DINING ROOM
- FITTED WARDROBES IN MAIN BEDROOM
- TOP FLOOR APARTMENT
- ALLOCATED & VISITOR PARKING
- ENSUITE SHOWER ROOM AND BATHROOM
- COUNCIL TAX BAND = D



TOTAL APPROX. FLOOR AREA 739 SQ.FT. (68.6 SQ.M.)

Whilst every attempt has been made to ensure the accuracy of the floor plan contained here, measurements of doors, windows, rooms and any other items are approximate and no responsibility is taken for any error, omission, or mis-statement. This plan is for illustrative purposes only and should be used as such by any prospective purchaser. The services, systems and appliances shown have not been tested and no guarantee as to their operability or efficiency can be given

Made with Metropix ©2013

