

# FOR SALE

---

Agnes Road,  
Wendell Park, W3

---

Maisonette  
Wendell Park

---

£725,000 lh

---

3  2  1 



**horton  
andgarton**

SALES / LETTINGS / PROPERTY MANAGEMENT

hortonandgarton.co.uk | Sales 020 8819 0510 | Lettings 020 8819 0511  
172 King Street, Hammersmith, W6 0QU



# FOR SALE

---

Agnes Road,  
Wendell Park, W3

---

Maisonette  
Wendell Park

---

£725,000 lh

---

3  2  1 



**horton  
andgarton**

SALES / LETTINGS / PROPERTY MANAGEMENT

hortonandgarton.co.uk | Sales 020 8819 0510 | Lettings 020 8819 0511  
172 King Street, Hammersmith, W6 0QU



# FOR SALE

Agnes Road,  
Wendell Park, W3

Maisonette  
Wendell Park

£725,000 lh

3  2  1 

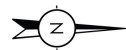
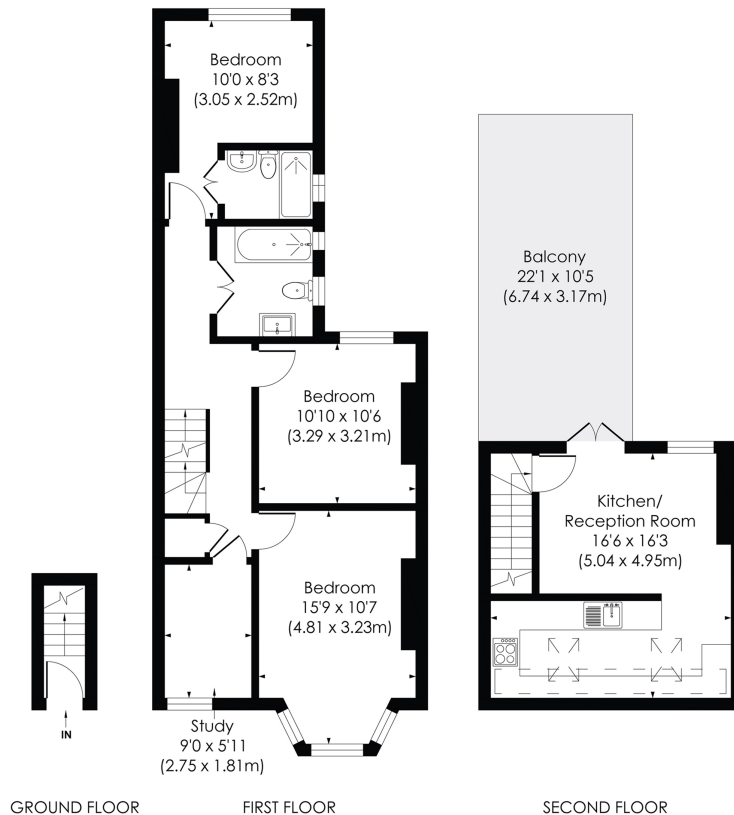


**horton  
andgarton**

SALES / LETTINGS / PROPERTY MANAGEMENT

hortonandgarton.co.uk | Sales 020 8819 0510 | Lettings 020 8819 0511  
172 King Street, Hammersmith, W6 0QU





**AGNES ROAD, W3**

Approx. Gross Internal Floor Area  
**921 Sq' / 85.59 SqM**



© Pixangle Property Marketing Ltd. info@pixangle.com Tel: 0208 870 2118  
 This floor plan has been prepared for the purpose of illustration only in accordance with the latest RICS code of measuring practice and is not to scale. All measurements and areas are approximate and whilst every effort has been made to ensure the accuracy of the plan contained here, no responsibility is taken for any error, omission or misstatement.



Edwardian maisonette | 22'1 West-facing roof terrace |  
 920 Sq' - 85.59 SqM | EPC rating D | Three bedrooms -  
 Two bathrooms | Wendell Park



hortonandgarton.co.uk  
 Sales 020 8819 0510  
 Lettings 020 8819 0511

172 King Street, Hammersmith, W6 0QU