

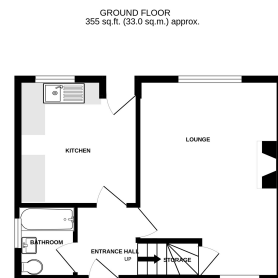
OATLEYS ROAD

£239,950



Key Features

- ✓ Semi-Detached House.
- ✓ Updating Throughout Required.
- ✓ Large Garden.
- ✓ Off Road Parking.
- ✓ No Onward Chain.



TOTAL FLOOR AREA: 717 sq.ft. (66.6 sq.m.) approx.
Made with Merge® ©2023