



8 Poplar Terrace, Douglas. IM2 4AR

* No Onward Chain * Spacious terraced four bedroomed home offering great space throughout, large lounge diner and benefits from a rear garden with decking area, with a separate games room and utility room with access to the rear yard and garden, close to schools and Nobles park and amenities.



£359,950 Freehold

PROPERTY DESCRIPTION

This impressive terraced home offers a generous and well-thought-out living space spread over four inviting floors. Upon entering, you are greeted by a bright and airy lounge dining area that serves for the family and offers great flexibility. The dining room provides an elegant space for family meals and gatherings, while the fitted galley kitchen is equipped with double oven, hob and grill with views over to the rear garden.

The home boasts four spacious double bedrooms, ensuring ample accommodation for families or guests. A 4 piece family bathroom with bath, walk in shower, basin and W.C. and a separate ground floor cloakroom enhance convenience, catering to the needs of a busy household .

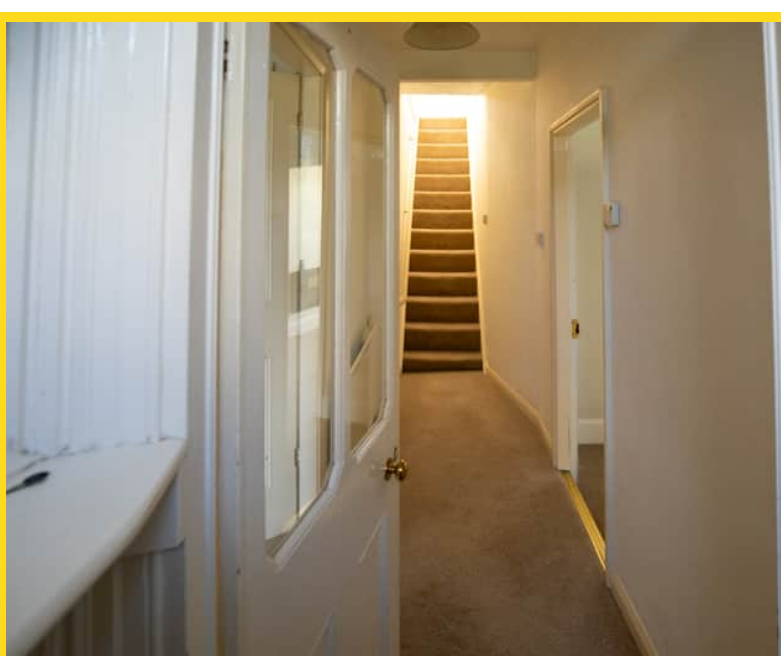
The lower level features a dedicated games room, perfect for leisure activities and family fun. The utility room adds practicality to daily tasks for a family.

Stepping outside, the rear of the property reveals a beautifully maintained lawned garden, complete with a decking area that invites you to enjoy summer BBQs. The two additional storage areas offer practical solutions for garden tools and outdoor equipment.

This property is conveniently located near local amenities, including a supermarket. Furthermore, the proximity to schools makes this home an excellent choice for families, blending comfort, convenience, and a welcoming atmosphere in a desirable neighbourhood. The gas-fired heating throughout the home ensures warmth and coziness during colder months, completing this exceptional living experience.

FEATURES

- Open House Tuesday 14th Jan 12 noon - 2pm
- Spacious Town House
- Lawned Garden & Decking area
- Spacious Lounge Diner
- 4 Bedrooms
- Family Bathroom & Downstairs Cloak room
- Fitted Kitchen
- Utility Room
- TV & Games Room
- No Onward Chain – Ready to move into



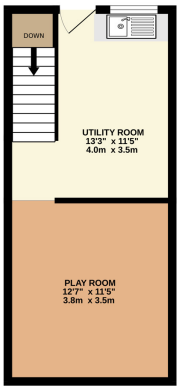
Property Images



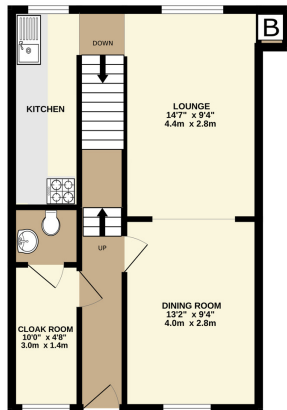
FLOORPLAN



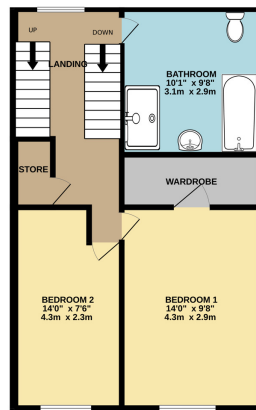
BASEMENT
295 sq.ft. (27.4 sq.m.) approx.



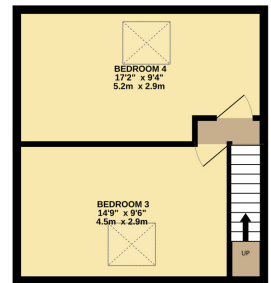
GROUND FLOOR
480 sq.ft. (44.6 sq.m.) approx.



1ST FLOOR
475 sq.ft. (44.2 sq.m.) approx.



2ND FLOOR
323 sq.ft. (30.0 sq.m.) approx.



SPACIOUS TERRACED HOUSE & GARDEN

TOTAL FLOOR AREA: 1574 sq.ft. (146.2 sq.m.) approx.

Whilst every attempt has been made to ensure the accuracy of the floorplan contained here, measurements of doors, windows, rooms and any other items are approximate and no responsibility is taken for any error, omission or mis-statement. This plan is for illustrative purposes only and should be used as such by any prospective purchaser. The services, systems and appliances shown have not been tested and no guarantee as to their operability or efficiency can be given.
Made with Metropix ©2025



DISCLAIMER: Whilst Manxmove Ltd believe that these details are correct, neither Manxmove Ltd or their clients guarantee their accuracy in any way. Consequently, these details are not to be used to form part of any legally binding contract. Prospective purchasers or tenants are advised to visit this property to satisfy themselves as to the correctness of these details. Please note, we use wide angle camera lenses in order to show as much of each room as possible. This is not intended to mislead any prospective purchasers or tenants in any way and an honest verbal description is always available prior to viewing if required.