



hastings
INTERNATIONAL

246-252 St John Street

£599,000

College Heights 246-252 St John Street, London EC1V 4PH

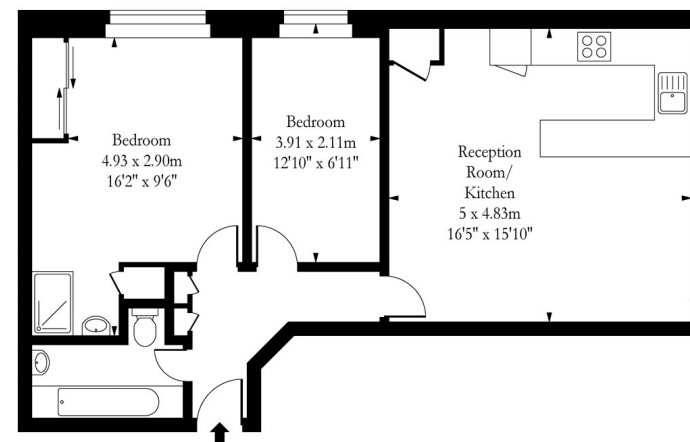
A well presented dual aspect two bedroom apartment located within an imposing period building within the heart of Clerkenwell, moments from Farringdon station for Elizabeth Line, Thameslink, Circle, Metropolitan and Hammersmith and City lines and a fine selection of cafes, bars and restaurants.

Occupying part of the second floor, this well presented dual aspect apartment comprises entrance hall with fitted storage, impressive reception room with dining area and open plan fitted kitchen with work tops and integrated appliances, master bedroom with fitted wardrobes, guest bedroom two and family bathroom. The apartment is available chain free with parking available under separate negotiation. The property is perfectly placed for convenient access to Farringdon Station for rail services to Reading, Abbey Wood, Brighton and Cambridge. Local shopping is also available together with a fine selection of cafes, bars and restaurants.

- College Heights EC1V
- Two Bedrooms
- Open Plan Reception Room
- Chain Free
- Period Apartment
- Dual Aspect Apartment
- Second Floor
- Excellent Location



College Heights, EC1



Second Floor

Approx Gross Internal Area 630 Sq Ft - 58.53 Sq M

This floor plan should be used as a general outline for guidance only and does not constitute in whole or in part an offer or contract. Any intending purchaser or lessee should satisfy themselves by inspection, searches, enquiries and full survey as to the correctness of each statement. Any areas, measurements or distances quoted are approximate and should not be used to value a property or be the basis of any sale or let.



