

Laburnham Court Flat 6, 22-24 Westbourne Gardens

Folkestone
CT20 2HZ

£170,000 LEASEHOLD

FOR SALE WITH BURNAP + ABEL...Burnap and Abel are delighted to introduce this spacious 2 bedroom lower ground floor flat located in the popular location of Westbourne Gardens in Folkestone's West End. This property needs modernisation and comprises of a large lounge/dining room, two double bedrooms, kitchen and a family bathroom. For your chance to view call Burnap and Abel now on 01303 258590. Keys are available at your convenience.



Lounge/Dining Room

19' 8" x 17' 4" (5.99m x 5.28m)

Kitchen

9' 10" x 9' 9" (3.00m x 2.97m)

Bedroom

16' 2" x 11' 7" (4.93m x 3.53m)

Bedroom

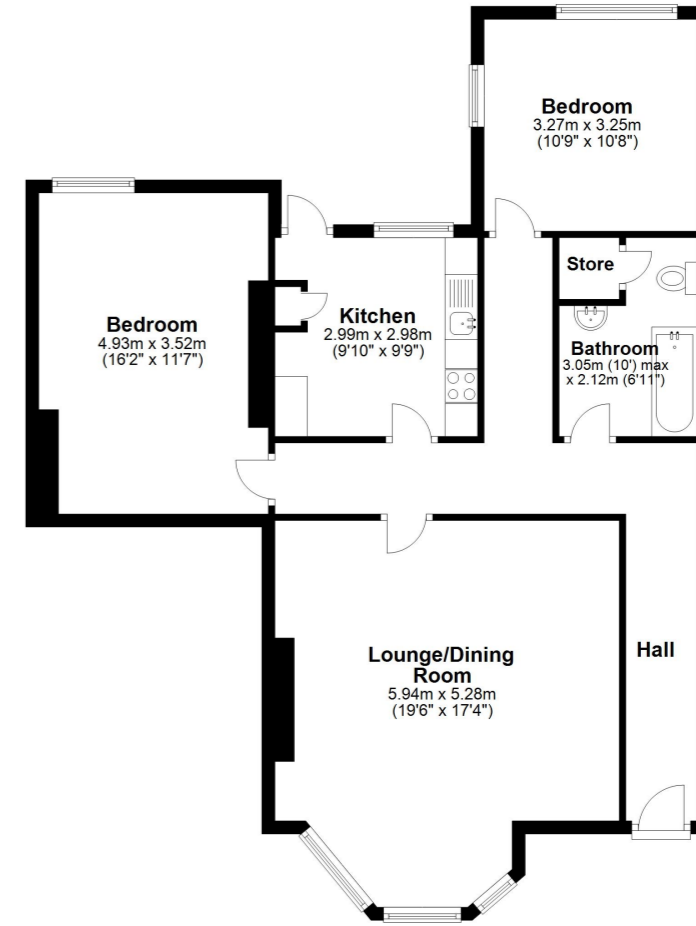
10' 9" x 10' 8" (3.28m x 3.25m)

Bathroom

10' 0" x 6' 11" (3.05m x 2.11m)

Lower Ground Floor

Approx. 89.4 sq. metres (962.3 sq. feet)



Whilst every attempt has been made to ensure the accuracy of the floor plan contained here, measurements of doors, windows, rooms and any other items are approximate and no responsibility is taken for any error, omission or mis-statement. This plan is for illustrative purposes only and should be used as such by any prospective purchaser. Plan produced using PlanUp.

