



126 Henniker Gate, Chelmsford, Essex. CM2 6SB

- ONE BEDROOM
- FIRST FLOOR MASONETTE
- WELL PRESENTED
- ALLOCATED PARKING SPACE
- LOUNGE
- FITTED KITCHEN
- SHOWER ROOM
- EXTERNAL STORAGE CUPBOARD
- POPULAR LOCATION
- VIEWING ESSENTIAL



PROPERTY DESCRIPTION

Located within the popular residential area of Chelmer Village is this well presented first floor maisonette. The accommodation comprises of an entrance lobby with stairs rising to the first floor, lounge, fitted kitchen, shower room and double bedroom with a large storage cupboard. The property further benefits from electric heating, double glazing, an external storage cupboard and an allocated parking space. (Council Tax - Band B)



ROOM DESCRIPTIONS

PROPERTY INFORMATION

(WITH APPROXIMATE ROOM SIZES)

Double glazed entrance door leads into the entrance lobby

ENTRANCE LOBBY

Stairs rising to first floor landing, door into lounge

LOUNGE

16' 0" x 9' 0" (4.88m x 2.74m)

Electric heater, double glazed window to rear, door to kitchen and door to inner lobby

KITCHEN

11' 6" x 6' 0" (3.51m x 1.83m)

Fitted with a range of base and wall mounted storage cupboards, double glazed window to side and rear, stainless steel sink unit, integrated electric oven and hob, washing machine, space for fridge/freezer

INNER LOBBY

Storage cupboard, doors to bedroom and shower room

SHOWER ROOM

Independent shower cubicle, obscure double glazed window to side, low level wc, wash hand basin, fully tiled surround.

BEDROOM

12' 0" x 9' 0" (3.66m x 2.74m)

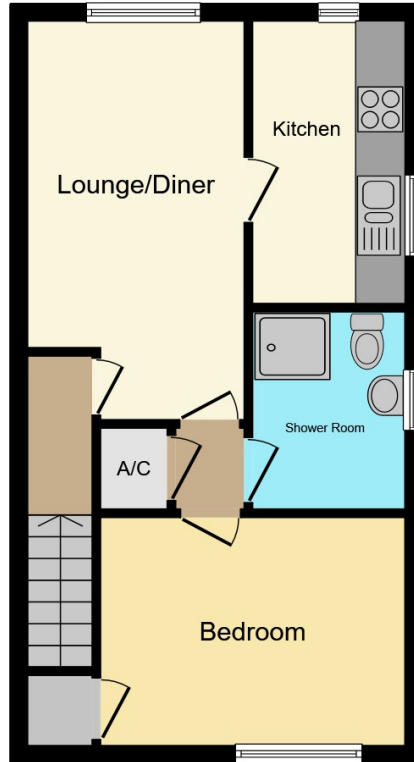
Double glazed window to front, electric heater, over stairs storage cupboard.

EXTERIOR

There is a secure storage cupboard located next to the entrance door and an allocated parking space.



FLOORPLAN



Floor Plan

This Floor Plan is for illustration purposes only and may not be representative of the property. The position and size of doors, windows and other features are approximate. Unauthorized reproduction prohibited. © PropertyBOX