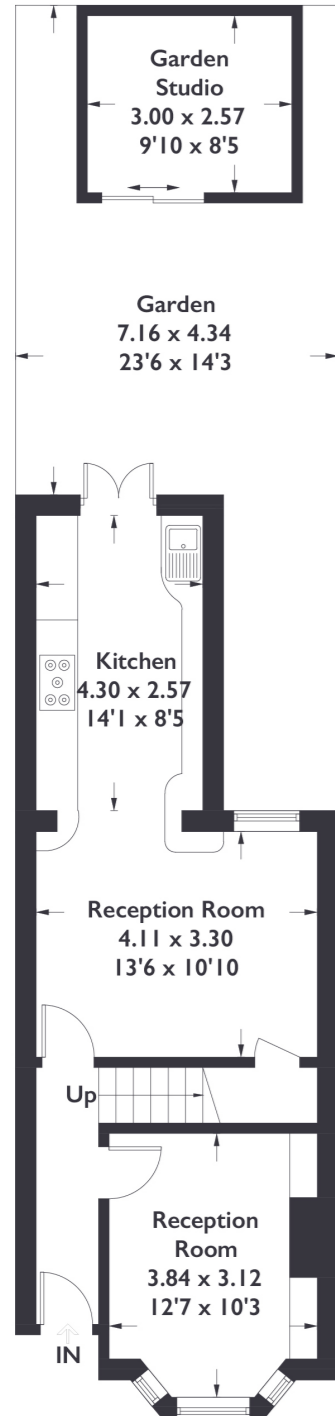
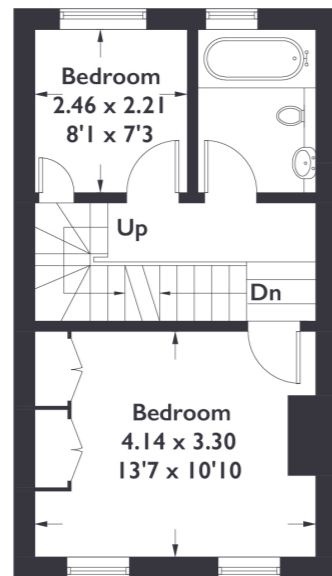


Westfield Road, W13

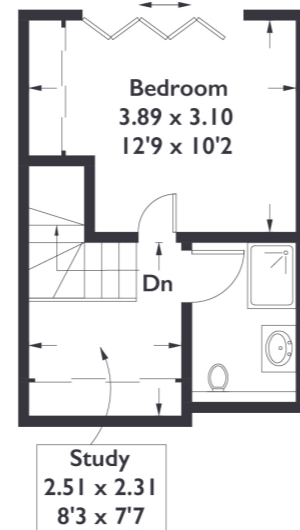
Approximate Gross Internal Area = 97.6 sq m / 1051 sq ft
Garden Studio = 7.7 sq m / 83 sq ft
Total = 105.3 sq m / 1134 sq ft



Ground Floor



First Floor



Second Floor



3 BEDROOM HOUSE

Westfield Road, W13

£835,000

Located on the quiet Westfield Road, just moments from all of the amenities Northfield Avenue has to offer, this bright and welcoming three bedroom property spans over three floors with the addition of an annex to the rear of the garden.

FEATURES

- Freehold
- Terraced Period House
- Three Bedrooms
- Two Reception Rooms
- Annex To The Rear Of The Garden
- Oaklands Primary School
- Elthorne Park High School
- Northfields Tube Station
- West Ealing Station (Elizabeth Line)

Measured in accordance with RICS Code of Measuring Practice. To be used for identification and guidance purposes only. Whilst every care is taken in the preparation of this plan, please check all dimensions, shapes and compass bearings before making any decisions reliant upon them.



3 BEDROOM HOUSE

Westfield Road, W13

£835,000

Leading into a beautiful and bright reception room you're welcomed by a generous space full of modern touches and features.

Through to the dining room and kitchen this contemporary space offers an attractive finish and a plethora of natural light. Storage in this galley style kitchen is extensive with built in appliances and access out into the recently renovated rear garden. A unique feature is the fully functioning annex to the rear and with an east-facing garden, you'll find sunshine all through the morning. Under stair storage completes the ground floor. Leading up to the first floor, there are two well-proportioned bedrooms and a large family bathroom. The larger of the bedrooms incorporates floor to ceiling storage. The loft extension offers an attractive double bedroom and ensuite, with the addition of a picturesque Juliet balcony accessible with bifolding doors.

Westfield Road is well positioned for the amenities of Northfields, with Lammas and Walpole parks a stones throw away and offering easy access to Ealing Broadway. With the added bonus of being within close proximity of Oaklands Primary School, Fielding Primary School and Elthorne Park High School.

