



Flat 6 Steeds Yard, Brewery Lane, Baldock, Hertfordshire. SG7





2 Bedroom Apartment

£225,000 Leasehold

A well presented two bedroom first floor apartment in a quiet residential courtyard in the heart of Baldock. This property benefits from a spacious lounge, fitted kitchen with appliances, two double bedrooms, modern bathroom, gas central heating and double glazing throughout. Outside, this property is further complemented by off road parking. Chain free.

- First floor apartment
- Two double bedrooms
- Fitted kitchen
- Gas central heating
- Allocated parking
- Chain free
- Strolling distance to town centre & train station
- EPC rating C. Council tax band C

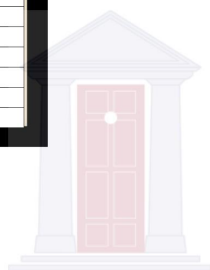
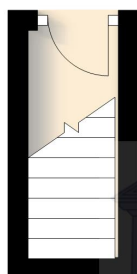
Agents Note:

Draft particulars yet to be approved by the vendor and may be subject to change.

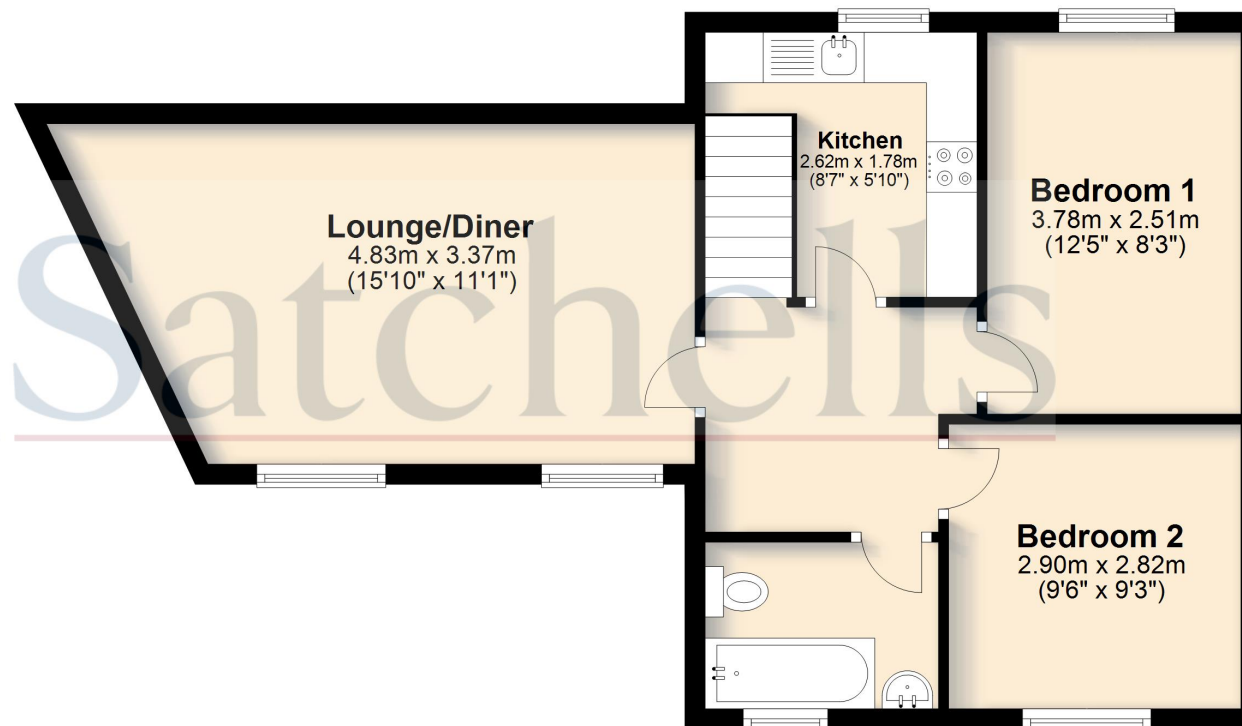


These particulars are a guide only and do not constitute an offer or a contract. The floor plan is for identification purposes only and not to scale. All measurements are approximate and should not be relied upon if ordering furniture, white goods and flooring etc. We have presented the property as we feel fairly describes it but before arranging a viewing or deciding to buy, should there be anything specific you would like to know about the property please enquire. Satchells have not tested any of the appliances or carried out any form of survey and advise you to carry out your own investigations on the state, condition, structure, services, title, tenure, and council tax band of the property. Some images may have been enhanced and the contents shown may not be included in the sale. Satchells routinely refer to 3rd party services for which we receive an income from their fee. If you would like us to refer you to one of these services please ask one of our staff who will pass your details on. We advise you check the availability of the property on the day of your viewing.

Ground Floor



First Floor



For illustrative purposes only - NOT TO SCALE - Measurements shown are approximate. The size and position of doors, windows, appliances and other features are approximate.
Plan produced using PlanUp.