



Day & Co
ESTATE AGENTS

28 Cavendish Street
Keighley
BD21 3RG



12 Golden View Drive, Thwaites
Brow, Keighley, West Yorkshire,
BD214SN

£239,995

T: 01535 664609

W: www.dayandcoestateagents.co.uk

E: keighley@dayandcoestateagents.co.uk

- STONE SEMI-DETACHED HOUSE
- GOOD SIZED GARDENS
- VIEWING ADVISED

- THREE BEDROOMS
- SINGLE GARAGE
- EPC RATING E

SUMMARY

** AN ATTRACTIVE THREE BEDROOM STONE SEMI-DETACHED HOUSE, GOOD SIZED REAR GARDEN WELL WORTHY OF A INSPECTION, MODERN FITTED KITCHEN, UTILITY ROOM, CONSERVATORY, SINGLE GARAGE, EPC RATING E **

FULL DESCRIPTION

Day & Co are pleased to be marketing this three bedroom stone built semi-detached house which has a good sized rear garden, pleasantly situated in a cul-de-sac location within the popular area of Thwaites Brow. This property is well worthy of a viewing to be fully appreciated with accommodation across two floors briefly comprising

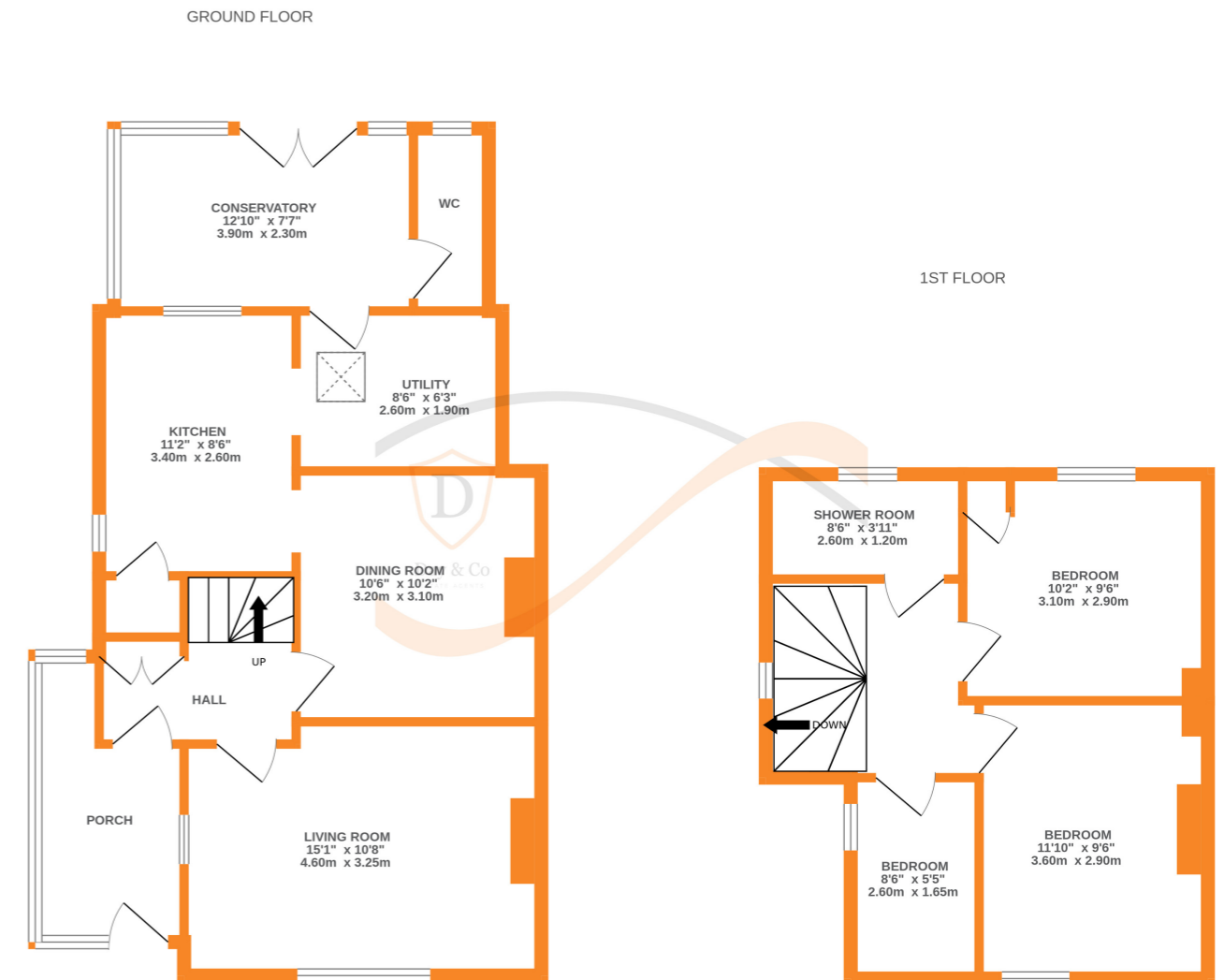
Ground Floor - Spacious Entrance Porch, Hall. Lounge, Dining Room, Kitchen which has a modern range of wall and base units, worktops, sink, oven, hob, extractor hood, Utility Room with plumbing for washing machine, Conservatory with double doors opening to the rear garden, Down Stairs toilet.

First Floor - Three bedrooms and house Shower Room comprising of a modern suite with shower cubicle, w.c., vanity wash hand basin.

Gas Central Heating & Double Glazing.

Outside - Garden to front, single garage and a long garden with patio and borders to the rear.

EPC Rating E



Whilst every attempt has been made to ensure the accuracy of the floorplan contained here, measurements of doors, windows, rooms and any other items are approximate and no responsibility is taken for any error, omission or mis-statement. This plan is for illustrative purposes only and should be used as such by any prospective purchaser. The services, systems and appliances shown have not been tested and no guarantee as to their operability or efficiency can be given.
Made with Metropix ©2024