

## 64 Harwood Close, Welwyn Garden City, Hertfordshire, AL8 7SN

- FULLY REFURBISHED
- FREEHOLD
- NEW KITCHEN & BATHROOM
- CHAIN FREE
- WEST SIDE AL8 CUL-DE-SAC
- CATCHMENT FOR HARWOOD JMI
- GARDEN AND PRIVATE PARKING BAY
- WALKING DISTANCE TO WELWYN NORTH AND GARDEN CITY MAINLINE STATIONS
- A QUIET SETTING



## PROPERTY DESCRIPTION

---

**\*\*CHAIN FREE\*\*WEST SIDE AL8 CUL-DE-SAC\*\*** This is a beautifully presented and REFURBISHED TWO BEDROOM mid-terrace home situated in a quiet and leafy setting. This is the perfect home for any first time buyer or downsize mover, having been tastefully decorated and modernised, the home offers a bright and airy through lounge/ dining area and a modern kitchen. A private and sunny garden with rear access and PRIVATE PARKING BAY. Located only a 20 minute walk into the town centre with the Mainline station serving Kings Cross in less than 30 minutes. Walking distance to Welwyn North station also. Catchment of Harwood HILL JMI. Energy rating C. This is a one off must view property to appreciate the delights of this great home.



## ROOM DESCRIPTIONS

---

### WELCOME TO HARWOOD CLOSE

A classic blend of 90's homes in a tree lined street scene. The quiet Cul-de-sac is the perfect retreat. Park up in the private parking area. Enter the property and into a convenient porch. The main living area is open plan and offers a dual aspect to the front and rear elevations. The rear elevation is east facing and the garden can be accessed via the convenient door. There is a dedicated dining area and a spacious living area. In addition there is a storage cupboard and under stairs alcove. The kitchen is finished with sleek navy gloss units. There is space for freestanding appliances. Stylish tiled splash backs and white worktops complete the modern look. There is a window to the rear elevation. Neighbouring homes have incorporated the dining and kitchen space into one for the ultimate open plan lifestyle.

### HEAD ON UP

There is a spacious landing which houses the airing cupboard and loft access. The principal bedroom is to the front, much larger than average, there is plenty of space for wardrobes to two areas, maximising the storage solutions. This room features a front facing aspect whilst bedroom two offers a rear facing aspect. The bathroom is the perfect place to unwind having undergone a tasteful refurbishment for a modern and ready to move into finish.

### TOUR THE GROUNDS

The easy to maintain sunny rear garden offers the perfect al-fresco dining experience on the patio area. The boundaries are enclosed with timber fencing. There is a lawn and a timber shed. For added convenience, there is a gate to the rear which leads around to the private car park area. The street offers unrestricted parking.

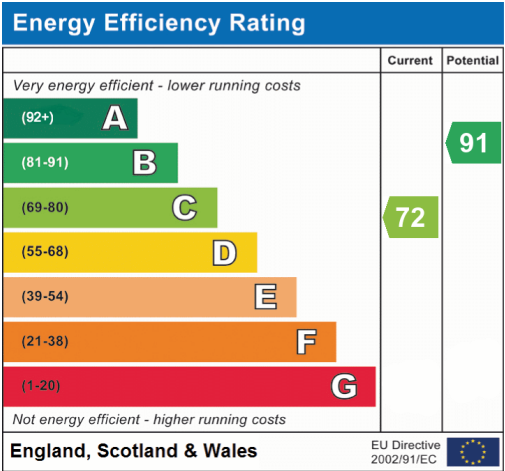
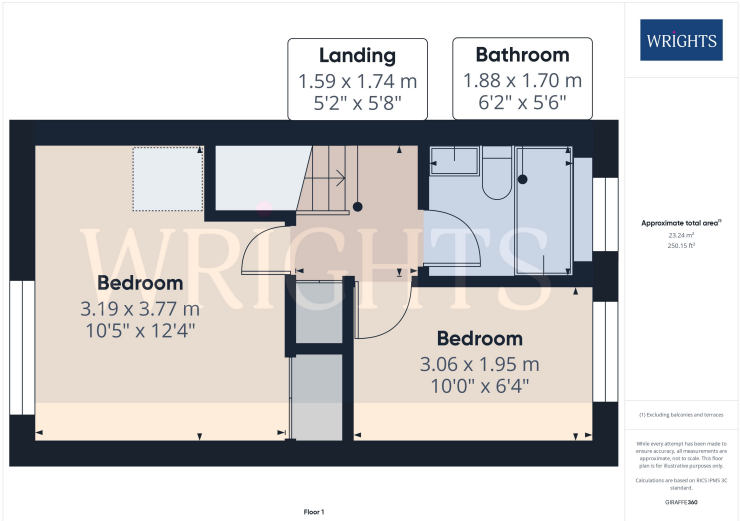
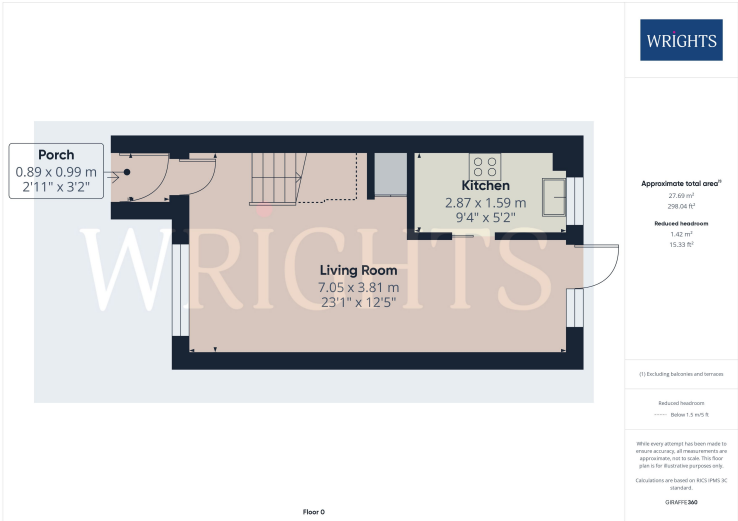
### COUNCIL TAX BAND C

### ABOUT THE WEST SIDE

Welwyn Garden City bears the legacy of Sir Ebenezer Howard, who founded the town in the 1920s and developed it into a designated new town in 1948. Conceptualized as a harmonious blend of urban conveniences and rural tranquility, Welwyn Garden City offered residents an escape from the hustle and bustle of overcrowded cities to a haven of sunshine, leafy lanes, open countryside, and inviting cafes. The town's design emphasized creating a healthy and vibrant environment for its inhabitants. Today, Welwyn Garden City's town centre stands as a vibrant hub teeming with activity and features an array of shops to cater to various tastes and needs. The focal point is the Howard Shopping Centre, home to popular high street retailers like John Lewis, complemented by convenient supermarket options including Waitrose and Sainsburys on the town's outskirts. Additionally, a charming cinema venue offers the latest film releases for



FLOORPLAN & EPC



Welwyn Garden City  
36, Stonehills, Welwyn Garden City, AL8 6PD  
01707 332211  
wgc@wrightsof.com