



11 Chestnut Walk, Bexhill-on-Sea, East Sussex
, TN39 4PS

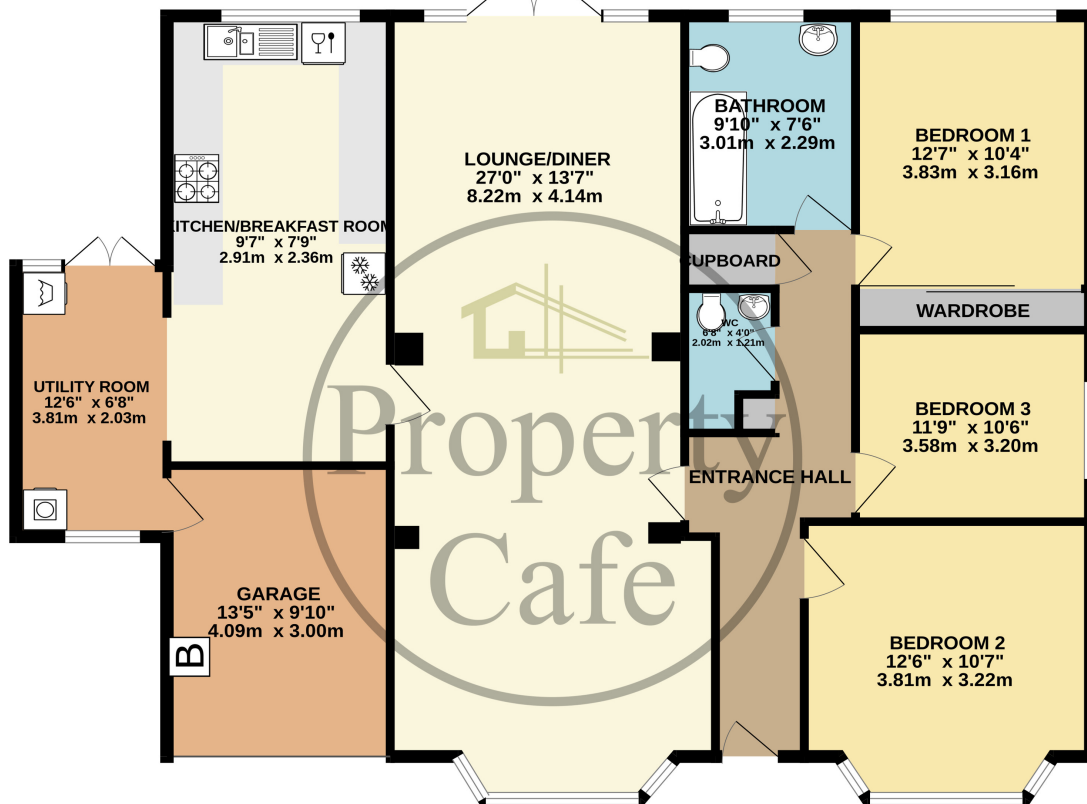
£569,950



- Spacious Three Bed Detached Bungalow
- Spacious extended living accommodation
- Well presented inner hallway
- Spacious dual aspect through lounge - diner
- Modern well equipped kitchen - diner
- Good size utility room
- Three good size family bedrooms
- Central heated and fully double glazed
- Modern family bathroom and separate WC
- Good size boarded & insulated loft
- Lovely West facing private garden
- Block paved driveway offering ample parking
- Highly sought after Little common location.
- Within an easy walking distance of village centre
- Well presented neutral decoration throughout
- Electric Car Charging Point
- A substantially extended and spacious bungalow
- Planning Permission Granted for loft conversion
- Planning Permission Granted Case No : RR/2021/861/P
- Wired with super fast fibre broadband
- Cavity Wall & Loft Insulation



GROUND FLOOR
1498 sq.ft. (139.2 sq.m.) approx.



TOTAL FLOOR AREA : 1498 sq.ft. (139.2 sq.m.) approx.

Whilst every attempt has been made to ensure the accuracy of the floorplan contained here, measurements of doors, windows, rooms and any other items are approximate and no responsibility is taken for any error, omission or mis-statement. This plan is for illustrative purposes only and should be used as such by any prospective purchaser. The services, systems and appliances shown have not been tested and no guarantee as to their operability or efficiency can be given.
 Made with Metropix ©2024

