



Day & Co
ESTATE AGENTS

28 Cavendish Street
Keighley
BD21 3RG



15 Eagle Street, Haworth,
Keighley, West Yorkshire, BD22
8AE

£149,995

T: 01535 664609

W: www.dayandcoestateagents.co.uk

E: keighley@dayandcoestateagents.co.uk

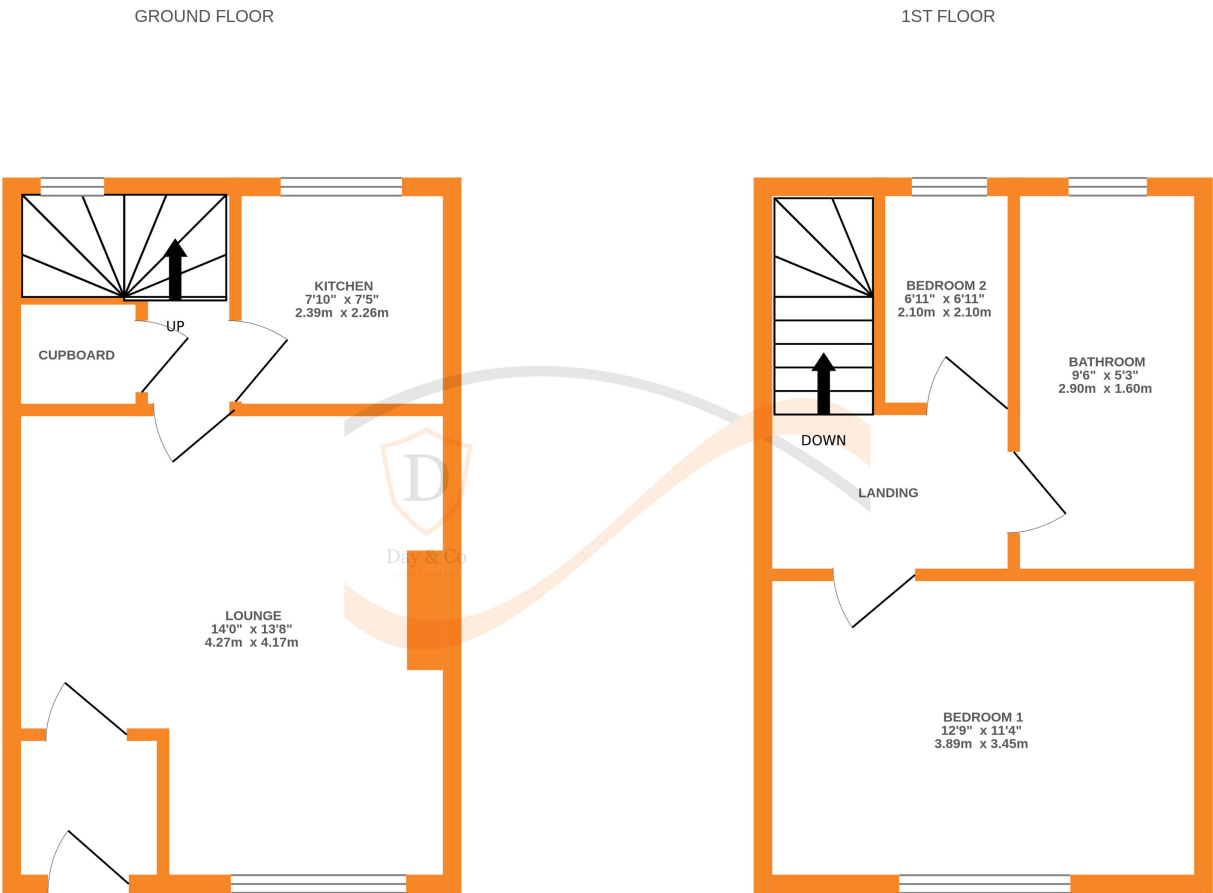
- EPC rating Is D
 - Two Bedrooms
 - Pleasant Garden
- Superbly Presented Through-By-Light Terrace
 - Modern Kitchen & Bathroom
 - Sought After Historic Village Of Haworth/NO CHAIN

SUMMARY

****A SUPERBLY PRESENTED 2 BEDROOM THROUGH-BY-LIGHT TERRACE, SOUGHT AFTER HISTPRIC VILLAGE LOCATION OF HAWORTH WITH EXCELLENT ACCESSS TO LOCAL AMENITIES!!**** Having a modern fitted kitchen & bathroom, master bedroom with fitted wardrobes, front garden - OFFERED FOR SALE WITH NO ONWARD CHAIN!! EPC rating is D.

FULL DESCRIPTION

Of interest to a variety of buyers is this superbly presented two bedroom through-by-light terrace situated in the sought after historic village of Haworth with excellent access to local amenities and schools. The accommodation comprises of an entrance vestibule leading in to the spacious lounge which has double glazed window to the front aspect, radiator and electric fire. The kitchen has a range of modern base and wall mounted units, integrated oven, hob and extractor fan, double glazed window to the rear. To the first floor there are two bedrooms, the master having fitted wardrobes. The bathroom has a three piece suite comprising of a bath with shower over, WC, wash hand basin, chrome heated towel rail, double glazed window to the rear. Externally there is a pleasant front garden. Offered for sale with no onward chain, EPC rating is D.



Whilst every attempt has been made to ensure the accuracy of the floorplan contained here, measurements of doors, windows, rooms and any other items are approximate and no responsibility is taken for any error, omission or mis-statement. This plan is for illustrative purposes only and should be used as such by any prospective purchaser. The services, systems and appliances shown have not been tested and no guarantee as to their operability or efficiency can be given.
Made with Metropix 62025