

COMING SOON  
FLEET ROAD HOLBEACH

37 FLEET ROAD, HOLBEACH



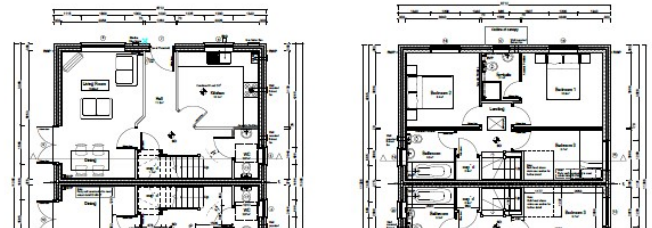
**Rosedale**  
LAND AND NEW HOMES

[www.rosedaleproperties.co.uk](http://www.rosedaleproperties.co.uk)

**New Development, Fleet Road, Holbeach, Lincolnshire PE12 8LA**

**£240,000**

37 FLEET ROAD, HOLBEACH



\*\*\* COMING SOON \*\*\* Brand new development of six 3 bedroom semi detached dwellings set on a private development. Each plot comes with 2 parking spaces and EV charger as standard. Early reservations will have a choice of kitchens and flooring.

**HOLBEACH**

The town of Holbeach is located 8.1 miles East of Spalding and 24 miles north of the city of Peterborough, on the A17. The town is well serviced with a wide variety of shops, public houses and restaurants as well as the very popular Holbeach College. Wide range of schools and the university academy Holbeach

**PROPERTY STYLE 1 ACCOMODATION**

- Entrance Hall
- Downstairs Cloakroom
- Kitchen
- Lounge / Diner
- Bedroom One
- Ensuite
- Bedroom Two
- Bedroom Three
- Bathroom

**PROPERTY STYLE 2 ACCOMODATION**

- Entrance Hall
- Downstairs Cloakroom
- Open Plan Kitchen / Dining / Living Area
- Bedroom One
- Ensuite
- Bedroom Two
- Bedroom Three
- Bathroom

**AGENTS NOTE**

These particulars are for reference only. Government schemes are at the discretion of the third parties and neither Rosedale nor the vendor has any influence. Specifications for individual dwellings vary and you should check final details prior to committing to a purchase. All images including maps and floor plans are for reference only and are not to scale. Part exchange available subject to developers decision.

