



*98b Powder Mill Road, Warrington, Cheshire.
WA4 1GD.
£395,000*

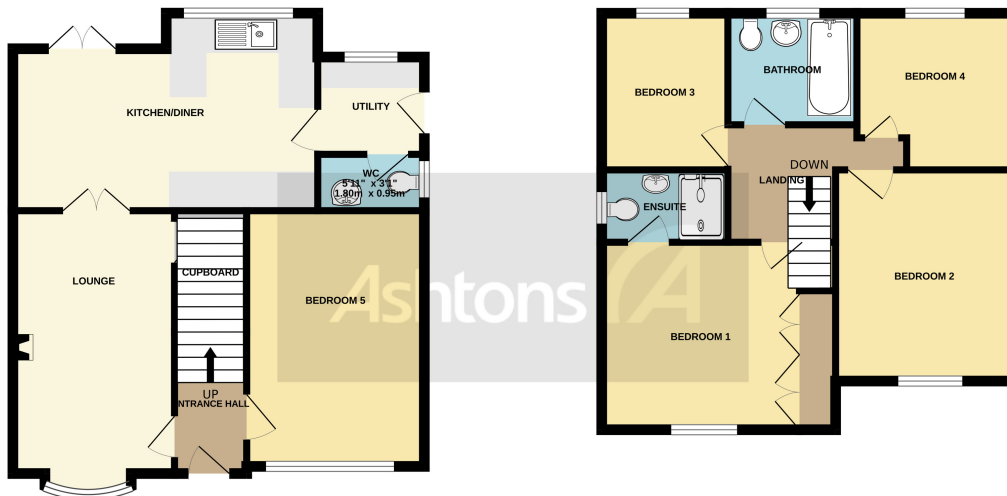


FOUR / FIVE BEDROOM DETACHED | IDEAL FAMILY HOME | SOUGHT AFTER
LOCATION | OPEN PLAY DINING KITCHEN | UTILITY AND WC | AMPLE PARKING WITH
ADDITIONAL SPACE | LANDSCAPED GARDENS | BEAUTIFUL DETACHED HOME |



GROUND FLOOR
549 sq.ft. (51.0 sq.m.) approx.

1ST FLOOR
499 sq.ft. (46.3 sq.m.) approx.



TOTAL FLOOR AREA: 1048 sq.ft. (97.4 sq.m.) approx.

Whilst every attempt has been made to ensure the accuracy of the floorplan contained here, measurements of doors, windows, rooms and any other items are approximate and no responsibility is taken for any error, omission or mis-statement. This plan is for illustrative purposes only and should be used as such by any prospective purchaser. The services, systems and appliances shown have not been tested and no guarantee as to their operability or efficiency can be given.
Made with Metropix ©2023

STUNNING DETACHED FAMILY HOME - FOUR/FIVE BEDROOMS - HIGH SPECIFICATION FINISH - LANDSCAPED GARDENS - CONVERTED GARAGE - GENEROUS SPACE TO THE SIDE - OFF-ROAD PARKING.

Situated on this ever-popular development is a beautifully presented detached family home, the property offers generous accommodation which is finished to the highest standard. Internally there is an entrance hallway with stairs to the first floor, a lounge with a bay window and understairs storage cupboard, and double doors opening into the kitchen dining room. there is a useful utility room and WC, and side and rear door access to the garage areas. Furthermore to the ground floor is the converted



Contact your local office
to arrange a viewing:

Padgate: 01925 479334
Great Sankey: 01925 454300
Winwick: 01925 232146
Stockton Heath: 01925 453400
St.Helens: 01744 754120
Wigan: 01942 498862
Culcheth: 01925 764744
Ashton-In-Makerfield: 01942 364446
Newton-Le-Willows: 01925 907770
Commercial Office: 01925 907709
Lettings Head Office: 01925 873533
Financial Services: 01925 221234

Viewing Arrangements

Viewing is strictly by appointment only through
Ashtons Estate Agency.

Disclaimer Property Details

These particulars, whilst being believed to be accurate are set out as a general outline only for guidance and do not constitute any part of an offer or contract. Intending purchasers should not rely on them as statements of representation of fact, but must satisfy themselves by inspection or otherwise as to their accuracy. We have not carried out a detailed survey nor tested the services, appliances and specific furnishings. The measurements given are approximate. No person in this firm's employment has the authority to make or give any representation or warranty in respect of the property.

All details, photographs and floorplans are the
copyright of Ashtons Estate Agency.



How much you can borrow?
Speak to a mortgage expert in your local office.

Ashtons Financial Services

Ashtons.net rightmove

PrimeLocation.com Zoopla.co.uk

Ashtons

- Latchford Village 15 minute walk
- Stockton Heath 2 miles
- Warrington Town Centre 2 miles
- Manchester Airport 14 miles via M56
- Liverpool City Centre 22 miles via M62
- Manchester City Centre 22 miles via M56
- Chester City Centre 22 miles via M56

(Distances quoted are approximate)