



Cambridge Square, London, W2 2PL

Cow & Co
LONDON



Available Now Presented in excellent condition throughout, the accommodation offers bright and spacious living along with smart contemporary style fixtures and fittings.

Located within easy reach of the open spaces of Hyde Park. Nearby underground stations include Edgware Road (District, Circle and Hammersmith & City lines), Marble Arch and Lancaster Gate (Central line). Moments from Paddington Station (Heathrow Express) providing city, national and international links.

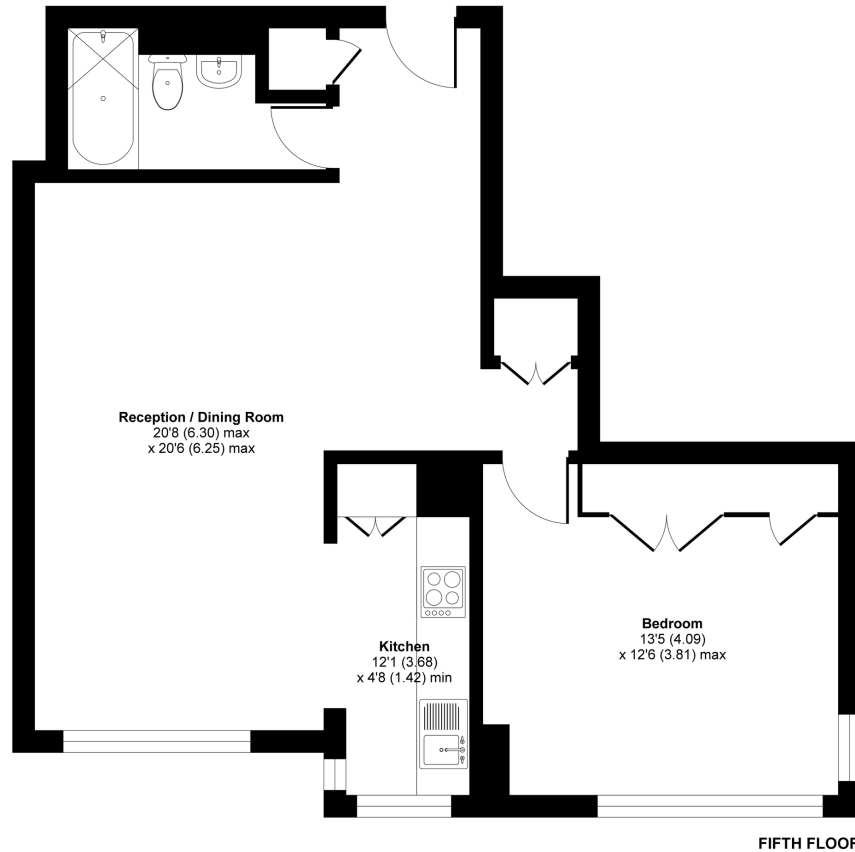


- *Available Now *
- Bright and spacious double bedroom
- Secure gated development with security
- Large bright reception room
- 24 hour concierge
- Lifts
- Sleek fitted kitchen.
- Smart well appointed bathroom

Quadrangle Tower, London, W2

Approximate Area = 643 sq ft / 60 sq m

For identification only - Not to scale



Floor plan produced in accordance with RICS Property Measurement Standards incorporating International Property Measurement Standards (IPMS2 Residential). © nichecom 2020. Produced for Cow & Co Properties Ltd. REF: 643743

Tel: 0208 065 0010
Email: thehub@cowandco-london.com
Web: cowandco-london.com

Agents note: All measurements are approximate and whilst every attempt has been made to ensure accuracy they are for general guidance only and must not be relied on. The fixture and fittings referred to have not been tested and therefore no guarantee can be given that they are in working order. Internal photographs are reproduced for general information and it must not be inferred that any item shown is included with the property.

Cow & Co
LONDON