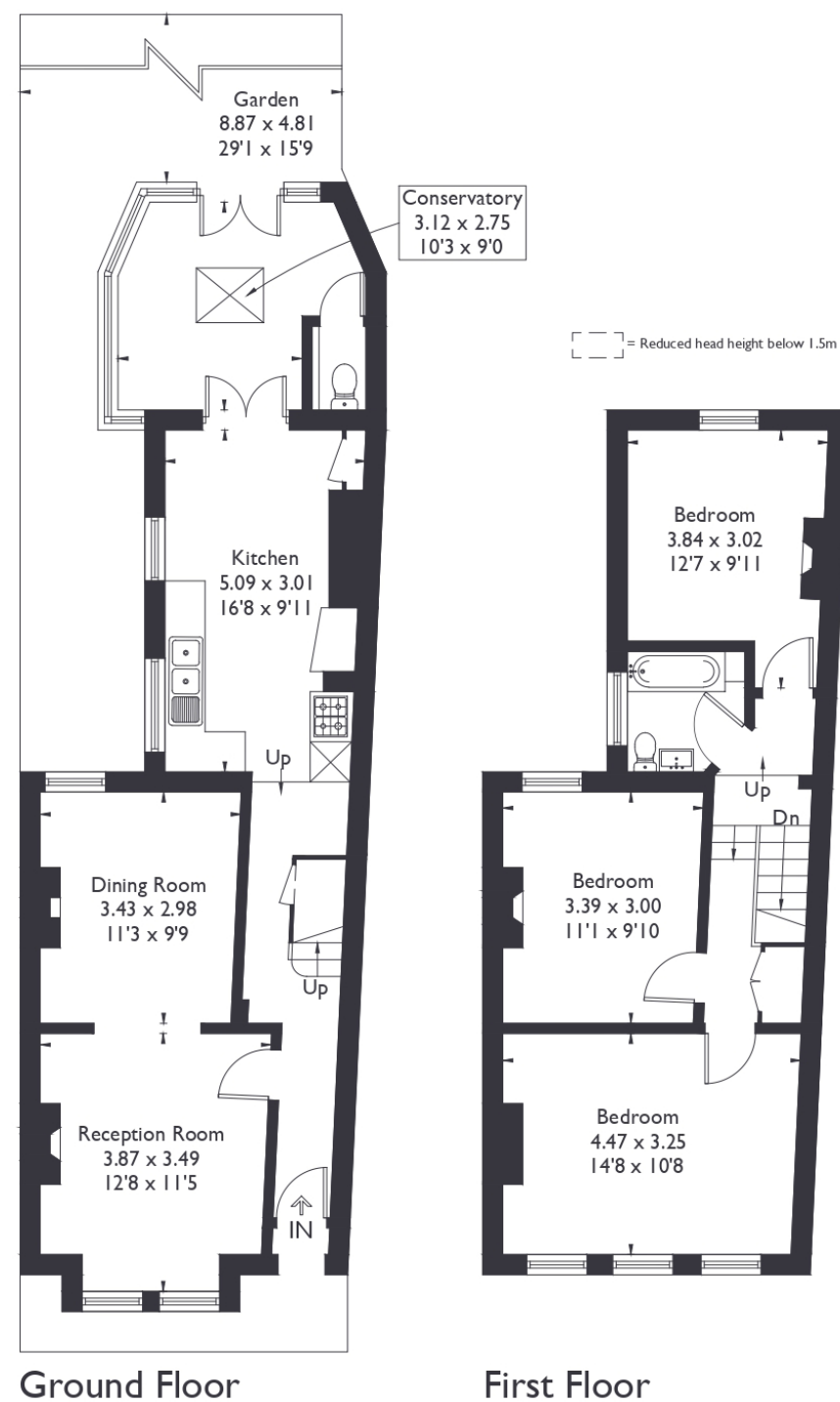


## Endsleigh Road, W13

Approximate Floor Area = 105.0 sq m / 1130 sq ft



### 3 BEDROOM HOUSE

**Endsleigh Road, W13**  
**£750,000**

Welcome to this three bedroom, one bathroom home with an additional downstairs W/C, located in the heart of West Ealing.

This much loved property has been in the same family for many years and is now ready for its next chapter. With plenty of potential, it offers a fantastic opportunity to create a wonderful family home or an exciting investment project.

### FEATURES

- Three Bedrooms
- One Bathroom & Downstairs W/C
- Separate Kitchen & Living Space
- Potential To Extend (STPP)
- West Ealing Station (Elizabeth Line)
- Drayton Manor School Catchment
- EPC Rating TBC





### 3 BEDROOM HOUSE

## Endsleigh Road, W13

The house features generously sized rooms, an abundance of natural light, and a southeast-facing garden—ideal for enjoying the sun throughout the day.

With planning permission, there is also scope to extend into the loft, allowing for further space and flexibility. Perfectly situated, the property is just a 10-minute walk to the Elizabeth Line, offering a direct route into the city.

It's also within 20 minutes of Ealing Broadway with its wide range of shops, restaurants, and amenities, while West Ealing station and excellent bus connections are just 5 minutes away, providing convenient links to Hanwell and Ealing Broadway. The property falls within the catchment area for Drayton Manor High School and St John's Primary School, making it an excellent option for families.

EPC Rating TBC.

