

# THOMAS CONNOLLY

ESTATE AGENTS | LETTING AGENTS | NEW HOMES | PROPERTY MANAGEMENT

83 Bushy Close, Bletchley MILTON KEYNES, . MK3 6PX

£325,000 Freehold

FOR SALE



## PROPERTY DESCRIPTION

Thomas Connolly Estate Agents are delighted to present this three / four bedroom house situated in the sought after location of Bletchley offering numerous amenities including schools / shops / shopping centres / traffic links.

Accommodation briefly comprises; entrance hall, cloakroom, Study / bedroom four , First floor accommodation offers kitchen diner and sitting room, Second floor offers three bedrooms and a bathroom. Outside there is an enclosed garden to the rear featuring a patio. To the front there is a driveway providing off road parking for one / two vehicles leading to a single garage. The property further benefits from double glazing, gas to radiator heating.

Please contact Thomas Connolly Estate Agents for further information relating to this property or to confirm viewing arrangements.

If you are thinking of buying, selling, renting or require mortgage advice, please do not hesitate to contact us to see how we can help you.

## FEATURES

- CLOAKROOM
- KITCHEN DINER
- GREAT INVESTMENT FOR A HMO

- GARAGE
- REAR GARDEN
- THREE / FOUR BEDROOMS



## ROOM DESCRIPTIONS

### Ground Floor

Entrance Porch

Entrance Hall

Cloakroom

Bedroom Four / Study

17' 9" x 12' 11" (5.41m x 3.94m)

### First Floor

First Floor Landing

Kitchen Diner

17' 9" x 14' (5.41m x 4.27m)

Lounge

17' 9" x 13' 2" (5.41m x 4.01m)

### Second Floor

Second Floor Landing

Bedroom One

13' 5" x 9' 6" (4.09m x 2.90m)

Bedroom Two

13' 4" x 7' 8" (4.06m x 2.34m)

Bedroom Three

9' 8" x 8' 6" (2.95m x 2.59m)

Bathroom

Outside

Front Garden

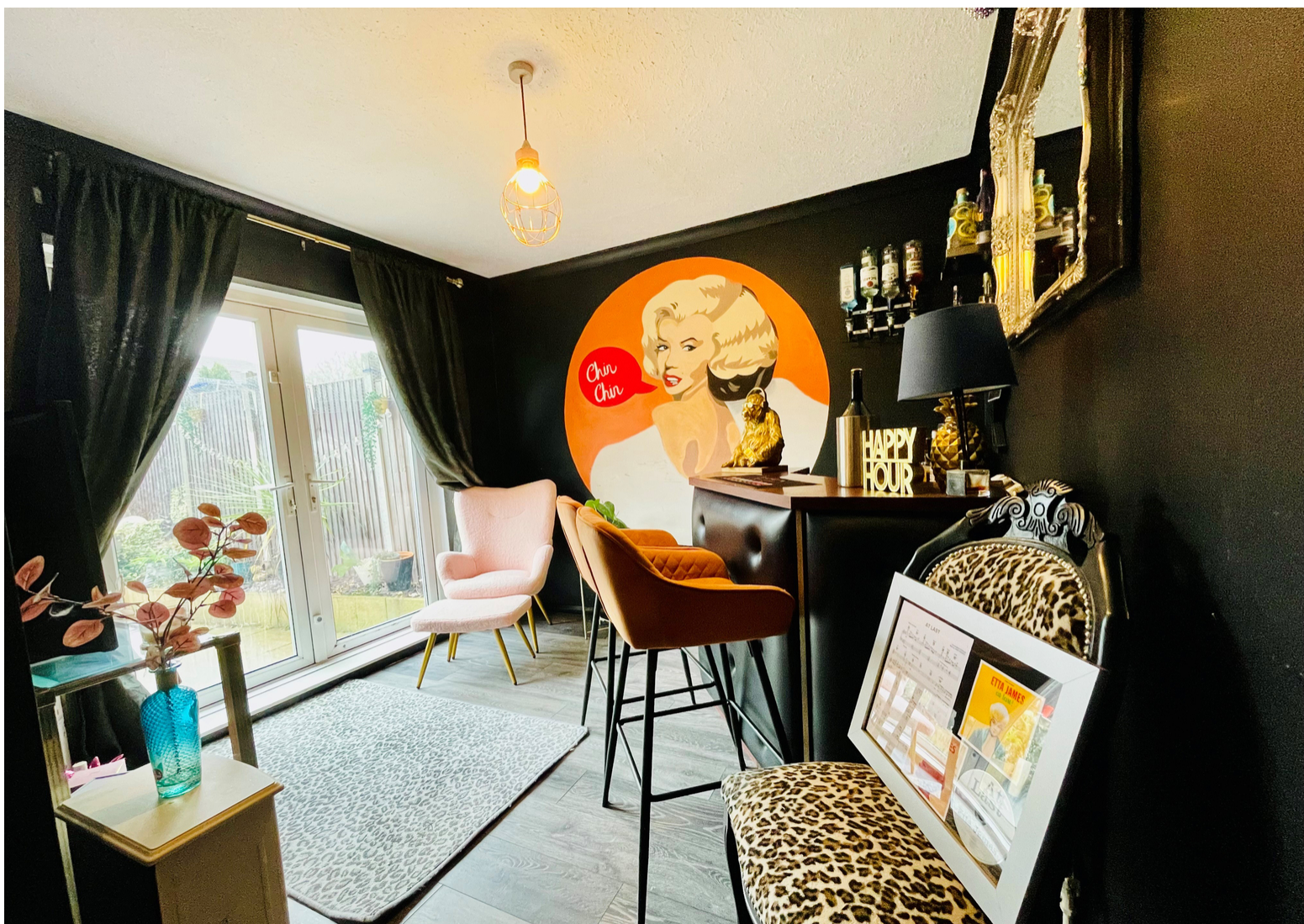
Rear Garden

Garage

### PLEASE NOTE:

These property particulars do not constitute part or all of an offer or contract. All measurements are stated for guidance purposes only and may be incorrect. Details of any contents mentioned are supplied for guidance only and must also be considered as potentially incorrect. Thomas Connolly Estate Agents advise perspective buyers to recheck all measurements prior to committing to any expense. We confirm we have not tested any apparatus, equipment, fixtures, fittings or services and it is within the prospective buyer's interests to check the working condition of any appliances prior to exchange of contracts. Thomas Connolly Estate Agents has not sought to verify the legal title of the property and the buyers must obtain verification from their solicitor.

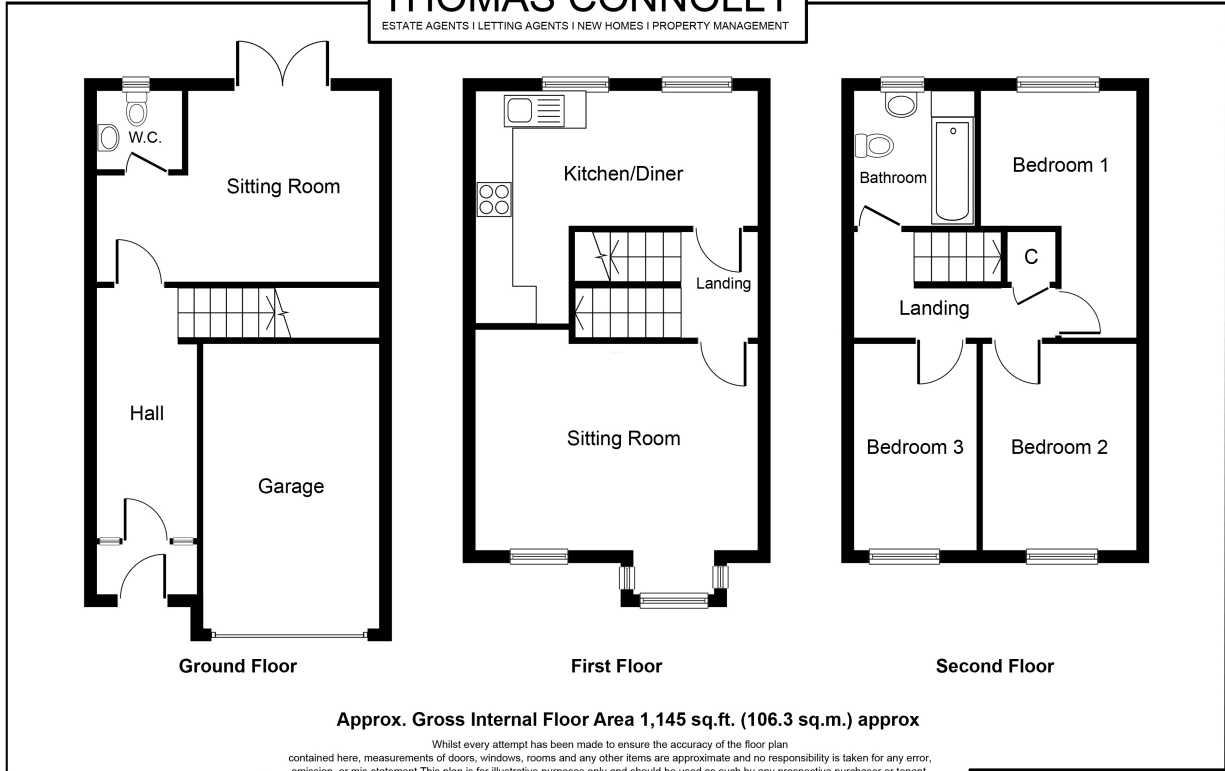






# FLOORPLAN

**THOMAS CONNOLLY**  
ESTATE AGENTS | LETTING AGENTS | NEW HOMES | PROPERTY MANAGEMENT



**Approx. Gross Internal Floor Area 1,145 sq.ft. (106.3 sq.m.) approx**

Whilst every attempt has been made to ensure the accuracy of the floor plan contained here, measurements of doors, windows, rooms and any other items are approximate and no responsibility is taken for any error, omission, or mis-statement. This plan is for illustrative purposes only and should be used as such by any prospective purchaser or tenant. The services, systems and appliances shown have not been tested and no guarantee as to their operability or efficiency can be given.

Copyright V360 Ltd 2024 | [www.houseviz.com](http://www.houseviz.com)