

TO LET
£975 pcm

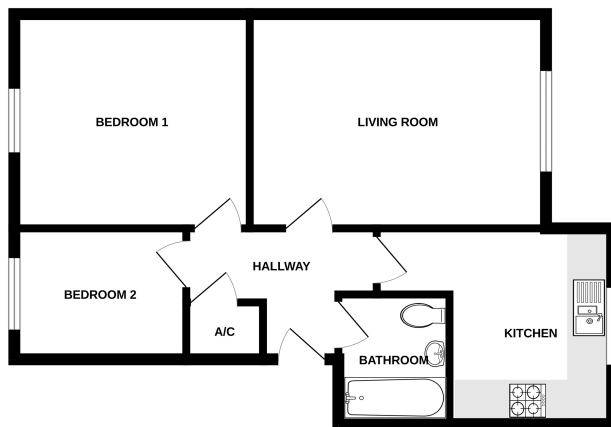


DESCRIPTION

A well-presented two-bedroom ground floor apartment ideally located on the south side of Newbury, offering easy access to local shops, schools, and transport links. The accommodation comprises an entrance hallway, a spacious living room, a well-equipped kitchen, a generous master bedroom, a second single bedroom, and a modern family bathroom. The property further benefits from off-road parking and communal outdoor space. Perfect for first-time buyers, investors, or those looking to downsize, this apartment offers both comfort and convenience in a desirable location.






FLOOR PLAN

GROUND FLOOR
517 sq.ft. (48.0 sq.m.) approx.



TOTAL FLOOR AREA - 517 sq.ft. (48.0 sq.m.) approx.

We warrant every attempt has been made to ensure the accuracy of the floorplan contained herein. Measurements of areas, volumes, masses and any other items are approximate and no responsibility is taken for any error, omission or misstatement. This plan is for illustrative purposes only and should be used as such by any prospective purchaser. The services, systems and appliances shown herein are not tested and no guarantee as to their condition or efficiency can be given.
Made with Neopix 12/2024

-  **GROUND FLOOR flat**
-  **Communal entrance hall with security entrance system**
-  **Kitchen**
-  **Lounge**
-  **Double bedroom**
-  **Single bedroom**
-  **Bathroom**
-  **Communal garden**
-  **Parking**

