



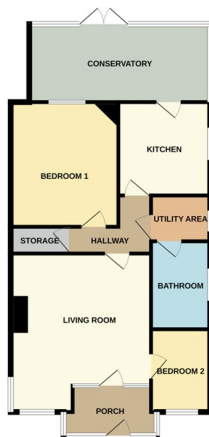
Rosedale
PROPERTY AGENTS

'Making your move easier'



Alexandra Road, Peterborough PE1 3DL

£240,000



*** NO ONWARD CHAIN *** " With fantastic character throughout, this 2 bedroom detached bungalow benefits from no onward chain. Featuring a garage and parking round the back of the property, a spacious wrap around garden, porch, living room, kitchen, conservatory, 2 bedrooms, utility area AND shower room! It is conveniently located close to the city centre and local amenities. EPC Rating - D / Council Tax Band - B".

PORCH

6' 9" (MIN) (2.06m) 9' 4" (MAX) x 5' 1" (2.84m x 1.55m) (approx)
Door to front and windows to front and sides.

LIVING ROOM

17' 0" (MAX) (5.18m) 14' 3" (MIN) x 13' 9" (4.34m x 4.19m)
(approx) Door to front, two radiators, three windows to front and window to side.

INNER HALL

2' 8" (MIN) (0.81m) 5' 9" (MAX) x 4' 4" (MIN) (1.75m x 1.32m) 7' 8" (2.34m) (MAX, not including cupboard) (approx) Radiator, loft access and cupboard with window to side.

KITCHEN

9' 5" x 9' 7" (2.87m x 2.92m) (approx) Fitted with a range of base and eye level units with work surfaces over, 4 ring gas hob, integrated double oven, sink with mixer tap, space for freestanding fridge / freezer and radiator. Door to rear and window to side.

BEDROOM ONE

11' 0" x 12' 9" (3.35m x 3.89m) (approx) Radiator, built in wardrobe and window to rear.

BEDROOM TWO

8' 6" x 6' 6" (2.59m x 1.98m) (approx) Radiator and window to front.

UTILITY AREA

6' 0" x 4' 6" (1.83m x 1.37m) (approx) Cupboard, wall mounted boiler and space for undercounter washing machine. Window to side. Door to:

SHOWER ROOM

8' 2" x 6' 5" (2.49m x 1.96m) (approx) Fitted with a three piece suite comprising low level W/C, wash hand basin and shower cubicle. Radiator and window to side.

CONSERVATORY

18' 9" x 8' 0" (5.71m x 2.44m) (approx) Radiator, French doors to rear, windows to rear and sides.

GARAGE

AGENT NOTES

The floorplan is for illustrative purposes only. Fixtures and fittings do not represent the current state of the property. Not to scale and is meant as a guide only.

