



**18c The Green, Deanshanger, Milton
Keynes, Northamptonshire, MK19 6HL**

£650,000 Freehold

- NEEDS COMPLETE REFURBISHMENT
- LARGE PLOT SIZE
- individual stone and brick detached residence approx. 3000 square feet
- Five Double Bedrooms
- Secluded plot sited at the end of a private driveway
- Gardens to four sides, adjacent to open fields
- EPC Rating



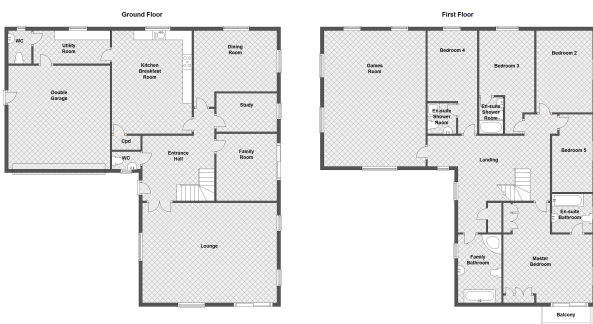


NEEDS COMPLETE RENOVATION APPROX 3,000 Squared feet

Situated at the end of a small private drive, in one of Buckinghamshire's most popular villages, lies this five double bedrooomed family home. The property enjoys an enviable position offering near complete privacy and enjoying views over open fields, ample parking and a double garage. We strongly advise early viewing to not miss this rare opportunity

Disclaimer

Whilst we have endeavoured to prepare our sales particulars accurately none of the services, appliances or equipment have been tested. A buyer should satisfy themselves on such matters prior to purchase. Any measurements or distances mentioned in these particulars are for guide reference only. If such particulars are fundamental to a purchase, buyers should rely on their own enquiries. All enquiries should be directed to Elevation Estate Agents in the first instance.



Floor Plans are for visual reference only
They should not be used for any other purpose