

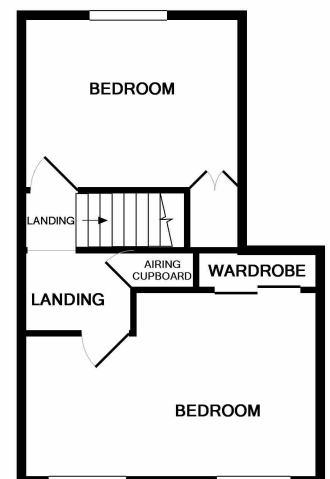
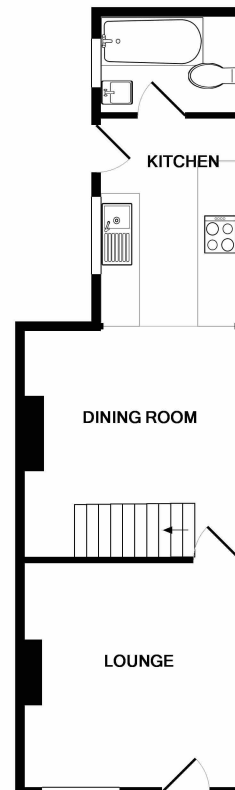
# BRIDGE STREET

£750 PCM



## Key Features

- ✓ Older Style Mid-Terraced House.
- ✓ Two Reception Rooms.
- ✓ Two Double Bedrooms.
- ✓ Garden.
- ✓ Off Road Parking Space.



GROUND FLOOR  
APPROX. FLOOR  
AREA 382 SQ.FT.  
(35.5 SQ.M.)

1ST FLOOR  
APPROX. FLOOR  
AREA 318 SQ.FT.  
(29.6 SQ.M.)

TOTAL APPROX. FLOOR AREA 700 SQ.FT. (65.0 SQ.M.)  
Made with Metropix ©2017