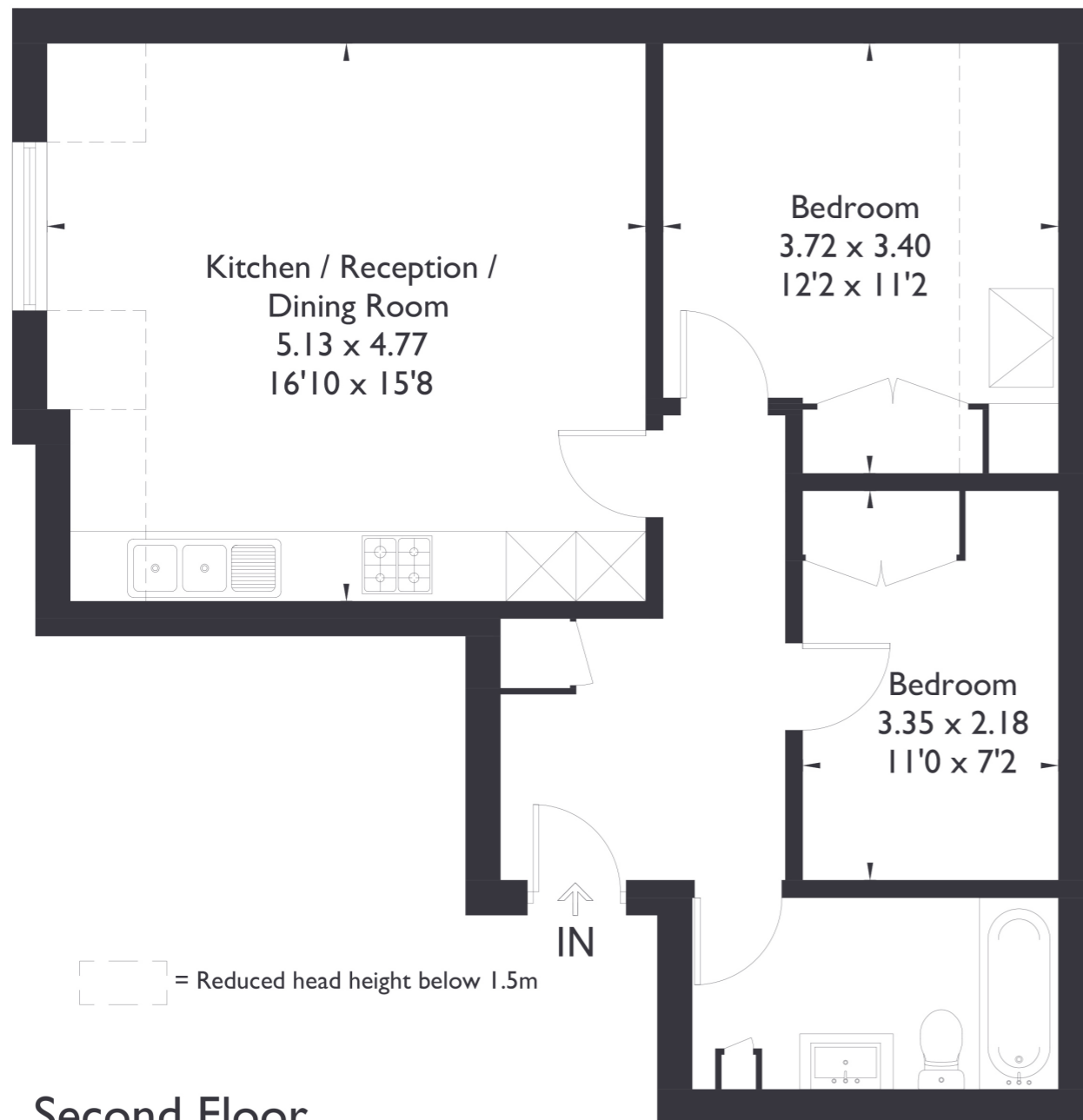


Flat 5, Harrington Court, 62 Northfield Road, W13 9SY

Approximate Floor Area = 58.7 sq m / 632 sq ft



Second Floor



2 BEDROOM FLAT

Northfield Road, W13
GUIDE PRICE £585,000

Welcome to this charming two bedroom, one bathroom top floor well maintained flat, ideally situated in a prime location. The property features an inviting open-plan kitchen, living, and dining area, along with two well-sized bedrooms and a spacious bathroom.

Lovingly looked after by the current owners, this property is a perfect family home.

FEATURES

- Share Of Freehold
- Two Bedrooms
- One Bathroom
- Open Plan Kitchen/ Living
- Northfields Station
- Fielding Primary School
- Gated Private Parking
- EPC Rating B



2 BEDROOM FLAT

Northfield Road, W13

An allocated private off-street parking space is also included.

Just a 5 minute walk to Northfields' amenities and a 10-minute stroll to Northfields Station, this flat is as convenient as it is desirable. Additionally, it falls within the sought-after catchment area for the highly regarded Fielding Primary School. EPC Rating B.

