

FOR SALE

Frithville Gardens,
Shepherd's Bush, W12

End of Terrace House
West London

£1,750,000 fh

5  3  4 



**horton
andgarton**

SALES / LETTINGS / PROPERTY MANAGEMENT

hortonandgarton.co.uk | Sales 020 8819 0510 | Lettings 020 8819 0511
172 King Street, Hammersmith, W6 0QU



FOR SALE

Frithville Gardens,
Shepherd's Bush, W12

End of Terrace House
West London

£1,750,000 fh

5  3  4 



**horton
andgarton**

SALES / LETTINGS / PROPERTY MANAGEMENT

hortonandgarton.co.uk | Sales 020 8819 0510 | Lettings 020 8819 0511
172 King Street, Hammersmith, W6 0QU



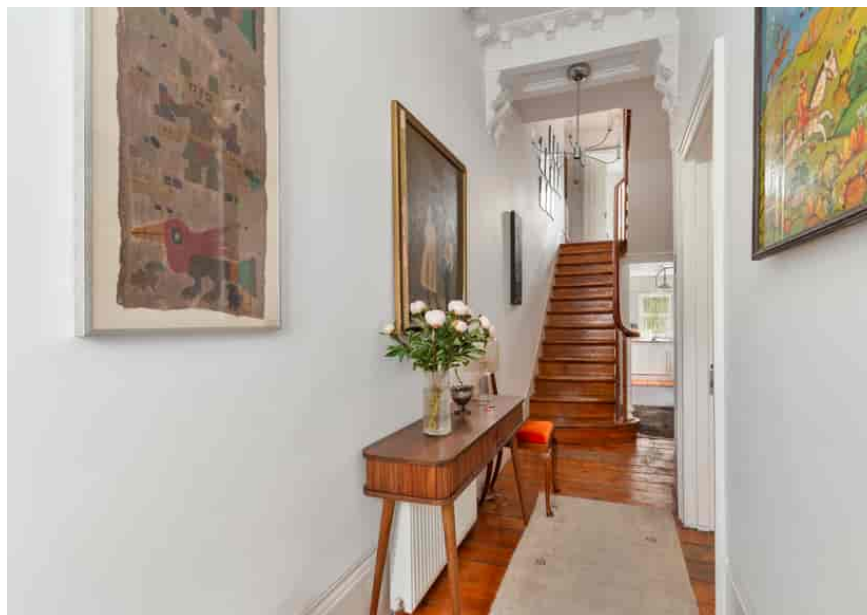
FOR SALE

Frithville Gardens,
Shepherd's Bush, W12

End of Terrace House
West London

£1,750,000 fh

5  3  4 

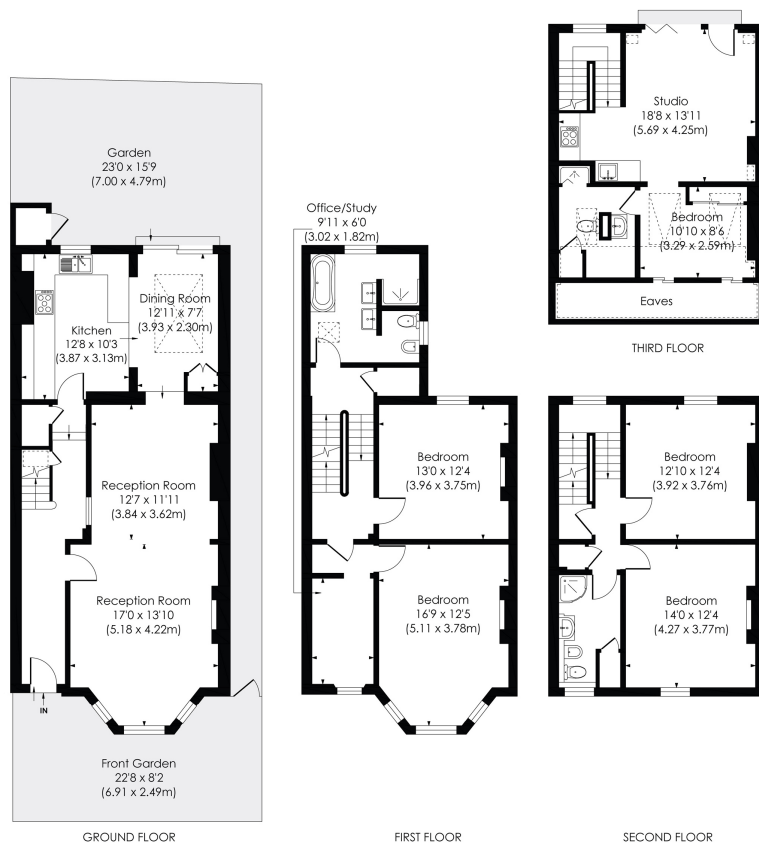


**horton
andgarton**

SALES / LETTINGS / PROPERTY MANAGEMENT

hortonandgarton.co.uk | Sales 020 8819 0510 | Lettings 020 8819 0511
172 King Street, Hammersmith, W6 0QU





FRITHVILLE GARDENS, W12

Approx. Gross Internal Floor Area
2442 Sq'/226.91 SqM (Including Reduced Height)
2248 Sq'/208.81 SqM (Excluding Reduced Height)

© Pixangle Property Marketing Ltd. info@pixangle.com Tel: 0208 870 2118

**horton
andgarton**

This floor plan has been prepared for the purpose of illustration only in accordance with the latest RICS code of measuring practice and is not to scale. All measurements and areas are approximate and whilst every effort has been made to ensure the accuracy of the plan contained here, no responsibility is taken for any error, omission or misstatement.



End terrace Victorian home | Five bedroom - Three bathroom | 2248 Sq' - 208.81 SqM | Stylish flexible accommodation | EPC Rating C | Shepherd's Bush



hortonandgarton.co.uk
 Sales 020 8819 0510
 Lettings 020 8819 0511

172 King Street, Hammersmith, W6 0QU