

FOR SALE

Seymour Road,
Chiswick, W4

End of Terrace House
Chiswick

£1,195,000 fh

4  2  2 



**horton
andgarton**

SALES / LETTINGS / PROPERTY MANAGEMENT

hortonandgarton.co.uk | Sales 020 3989 6464 | Lettings 020 3989 5454
161 Chiswick High Road, London, W4 2DT



FOR SALE

Seymour Road,
Chiswick, W4

End of Terrace House
Chiswick

£1,195,000 fh

4  2  2 



**horton
andgarton**

SALES / LETTINGS / PROPERTY MANAGEMENT

hortonandgarton.co.uk | Sales 020 3989 6464 | Lettings 020 3989 5454
161 Chiswick High Road, London, W4 2DT



FOR SALE

Seymour Road,
Chiswick, W4

End of Terrace House
Chiswick

£1,195,000 fh

4  2  2 



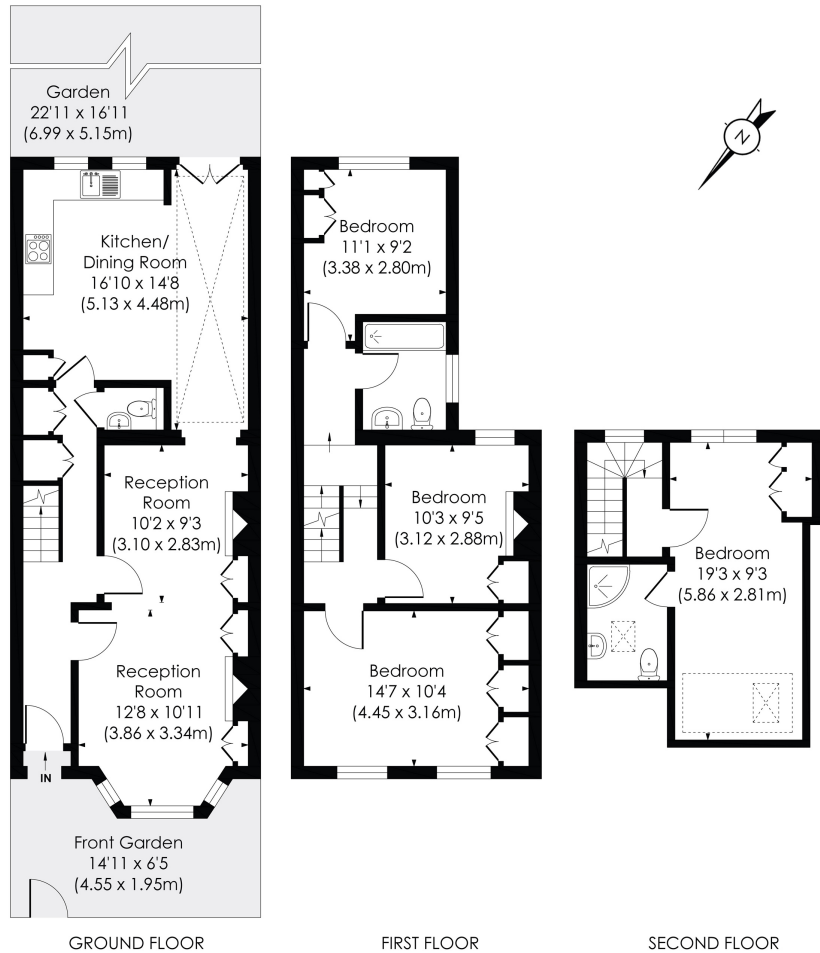
**horton
and garton**

SALES / LETTINGS / PROPERTY MANAGEMENT

hortonandgarton.co.uk | Sales 020 3989 6464 | Lettings 020 3989 5454

161 Chiswick High Road, London, W4 2DT





Victorian end terrace house | Four bedrooms - Two bathrooms | 1254 Sq' - 116.51 SqM | South-East facing garden | EPC rating E | Chiswick Park



hortonandgarton.co.uk
Sales 020 3989 6464
Lettings 020 3989 5454

161 Chiswick High Road, London, W4 2DT

**horton
andgarton**

This floor plan has been prepared for the purpose of illustration only in accordance with the latest RICS code of measuring practice and is not to scale. All measurements and areas are approximate and whilst every effort has been made to ensure the accuracy of the plan contained here, no responsibility is taken for any error, omission or misstatement.

SEYMOUR ROAD, W4
Approx. Gross Internal Floor Area
1291 Sq' / 119.94 SqM (Including Reduced Height)
1254 Sq' / 116.51 SqM (Excluding Reduced Height)
© Pixangle Property Marketing Ltd. info@pixangle.com Tel: 0208 870 2118