



1 Ochilview Drive, High Valleyfield, KY12 8UB  
Offers Over £125,000







# Key Features

 2 Bedrooms

 1 Public

 1 Bathroom

- A well-presented, two bedroom end terraced villa located within the popular village of High Valleyfield
- Boasting corner plot and detached single garage
- High Valleyfield boasts excellent transport links to Edinburgh and the Kincardine Bridge with amenities available in nearby Dunfermline and Cairneyhill
- The historic village of Culross is within easy distance of the property, with Glasgow circa 30 miles from the village
- An excellent first time home with primary schooling available
- Bright and spacious, open plan lounge and dining area with ample space for free standing furniture and built in electric fireplace
- Kitchen with a range of floor and wall mounted storage options, room to house white goods and access out onto rear gardens
- Two generous double bedrooms with room for a variety of free-standing furniture and built in wardrobes available
- Family bathroom with three-piece suite and shower over the bath
- Gardens to the rear with patio area, lawn and detached single garage and driveway
- Gas central heating and double glazing
- Viewing comes highly recommended to appreciate this perfect first-time home in a quiet residential location











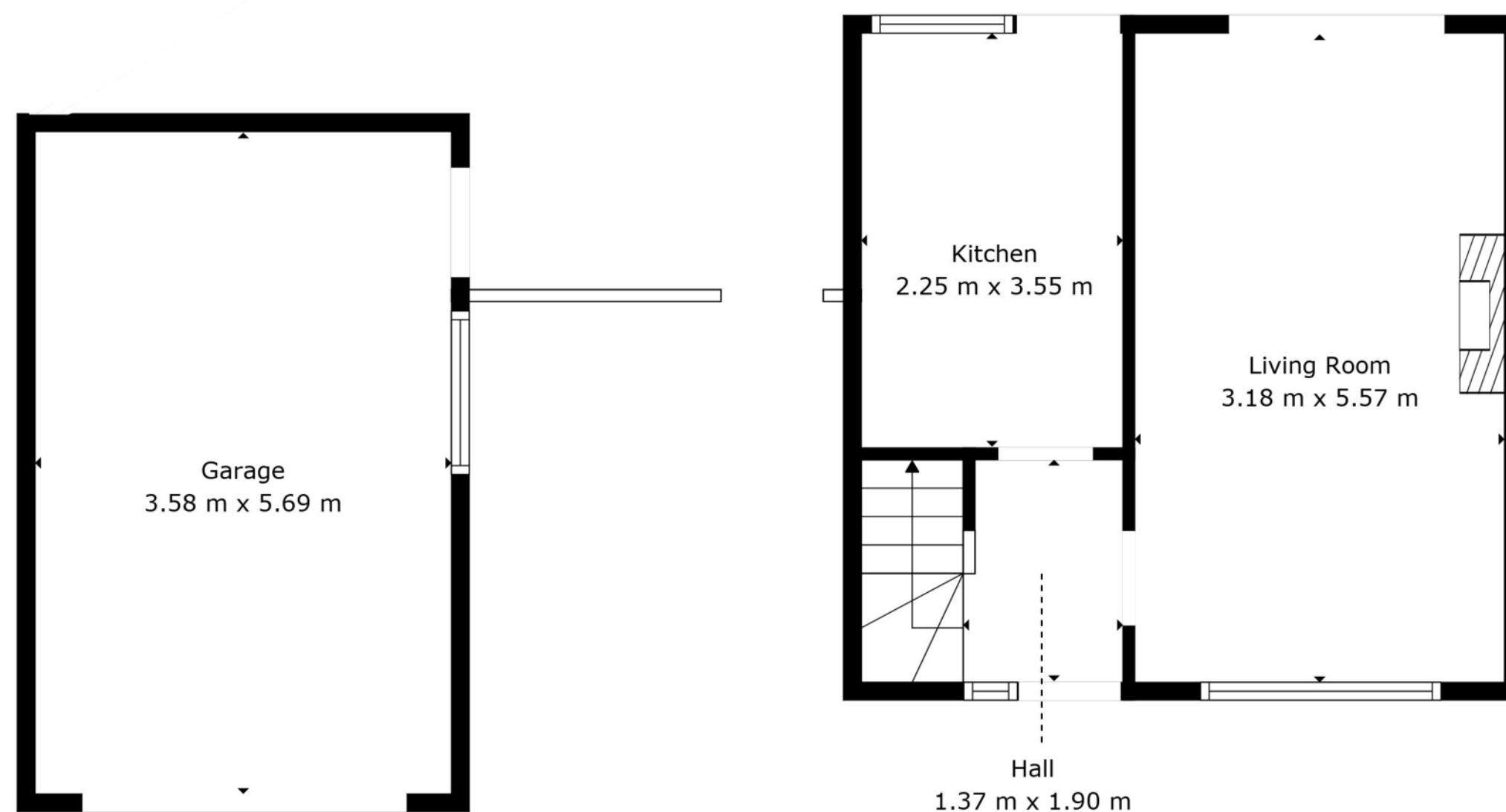


# Location

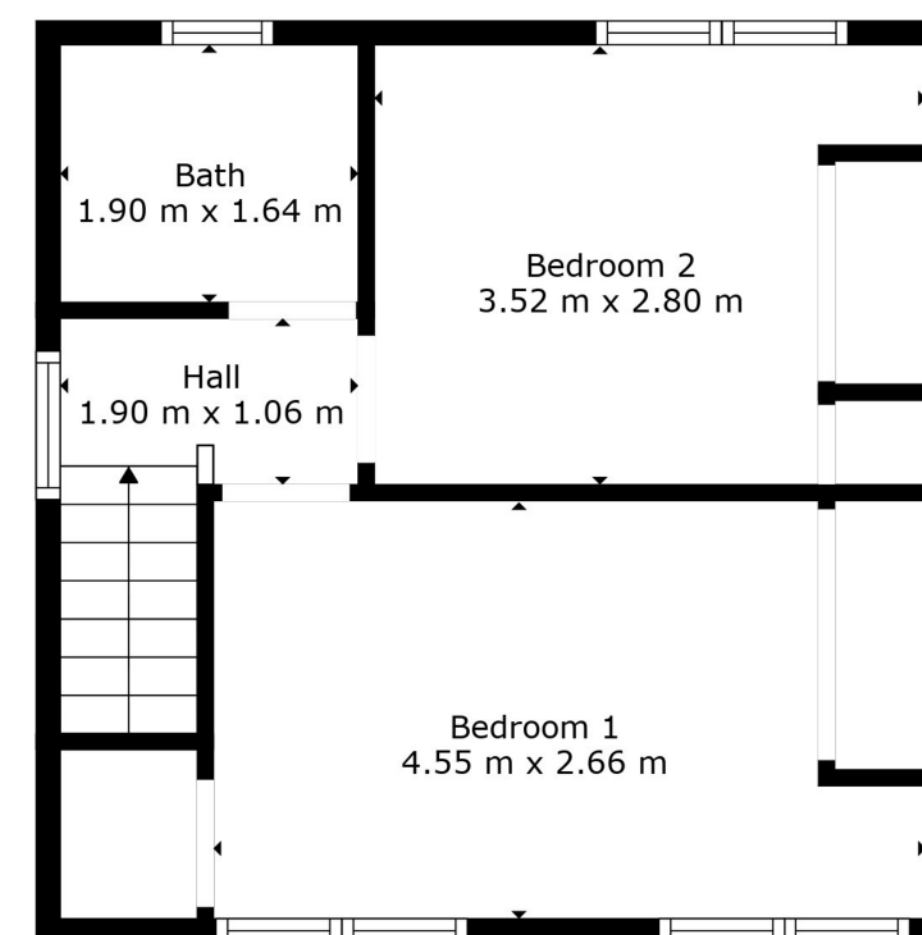
"Nestled along the coast of the River Forth, High Valleyfield is a charming village that offers an appealing blend of affordability and convenience. Situated just a short drive from Dunfermline, it provides easy access to excellent transport links, making it a great choice for commuters to Edinburgh and Glasgow. The village boasts a strong sense of community, with local amenities including shops, schools, and leisure facilities, as well as beautiful green spaces like nearby Valleyfield Woodland Park. Whether you're a first-time buyer or looking for a family home, High Valleyfield offers a range of property options in a well-connected setting."







Floor 1




Floor 2



Floor Plan Created By Cubicasa App. Measurements Deemed Highly Reliable But Not Guaranteed.



## Enquiries

 01383 629720

 [info@maloco.co.uk](mailto:info@maloco.co.uk)

 [maloco.co.uk](http://maloco.co.uk)



Floorplans are for illustrative purposes only. Measurements are deemed highly reliable but not guaranteed.

