



SOLE
AGENT

19 Marina Court

Glategny Esplanade | St Peter Port | GY11WP

This first floor apartment is located in a prestigious development on the St Peter Port water front with the centre of town a short walk away. Accommodation comprises lounge/diner, kitchen, double bedroom, a bathroom and an airing cupboard. There is a secure underground parking space for one car, a communal courtyard and a roof-top garden. This property is suited to a professional couple. Regret no smokers or pets. Available immediately.

£1,800 pcm

1 BEDROOM

1 BATHROOM

1 RECEPTION

Shields
& Rutland

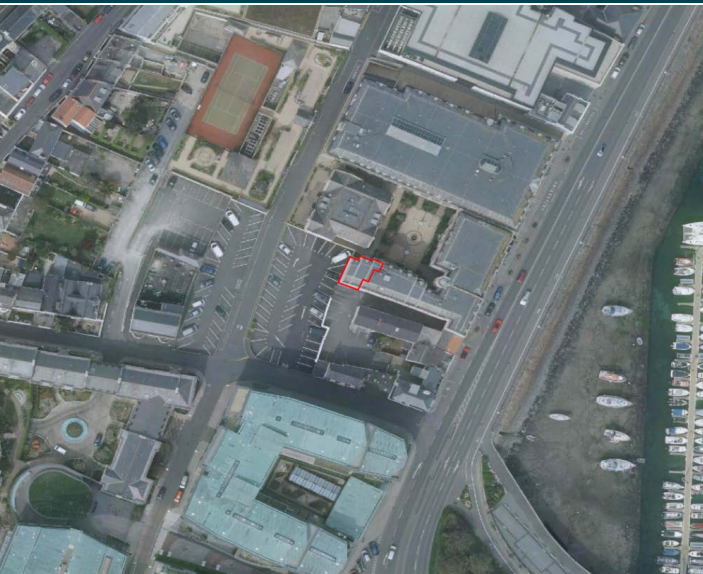
PHOTOS



PHOTOS



SPECIFICATIONS



Entrance Hall

2.95m x 1.19m (9' 8" x 3' 11")

Lounge/Diner

7.00m x 4.47m (23' 0" x 14' 8")

Kitchen

3.49m x 2.50m (11' 5" x 8' 2")

Bedroom

4.84m x 4.62m (15' 11" x 15' 2")

Bathroom

2.30m x 1.86m (7' 7" x 6' 1")

Parking

There is allocated parking for one car.

PRICE INCLUDES

Curtains, carpets and light fittings

SPECIAL FEATURES

- Excellent social space
- Secure underground parking
- Communal courtyard
- Central location

SERVICES

Mains water, electricity and drainage.

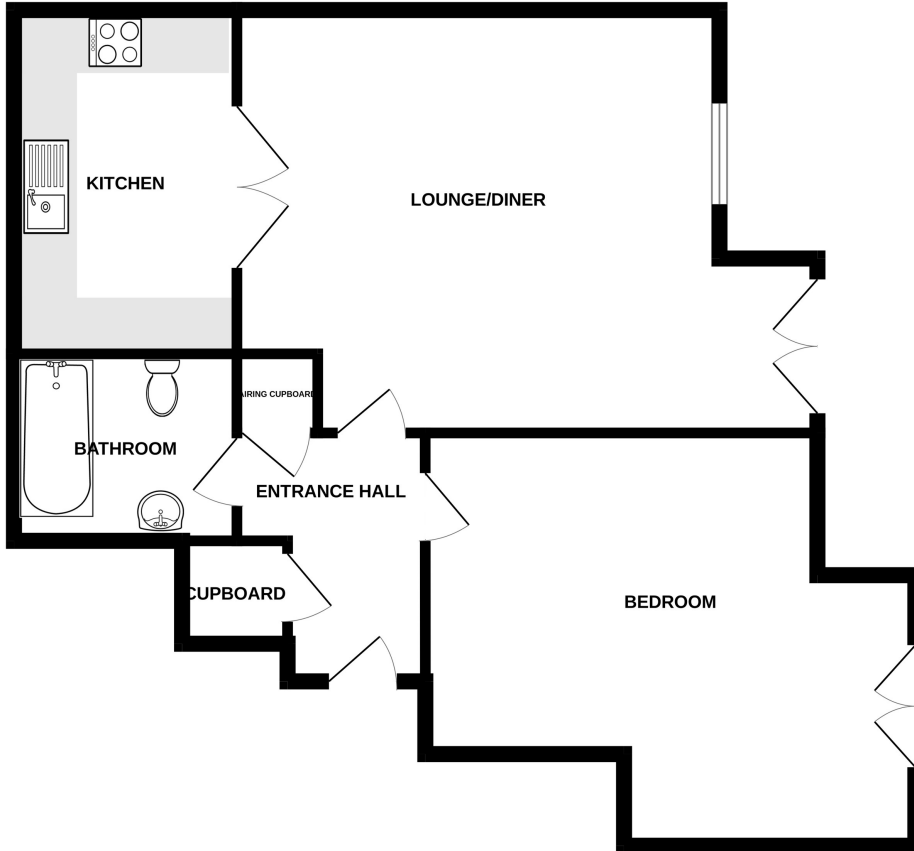
APPLIANCES INCLUDED

- Integrated microwave
- Integrated Neff oven
- Four ring hob
- Neff extractor fan
- Washing machine
- Integrated fridge/freezer
- Integrated dishwasher

SCHOOL CATCHMENT

N/A

FIRST FLOOR



19 MARINA COURT

Whilst every attempt has been made to ensure the accuracy of the floorplan contained here, measurements of doors, windows, rooms and any other items are approximate and no responsibility is taken for any error, omission or mis-statement. This plan is for illustrative purposes only and should be used as such by any prospective purchaser. The services, systems and appliances shown have not been tested and no guarantee as to their operability or efficiency can be given.
Made with Metropix ©2024