



Leckhampton

Leckhampton

Honeysuckle Avenue, Cheltenham, GL53 0AF

£495,000 Freehold

A beautifully presented 3 bedroom, semi detached, family house, situated on this sought after development close to the new High School Leckhampton.

Reception hall • cloakroom • living room • kitchen/dining room • utility cupboard • 3 bedrooms • 2 bath/shower rooms • garage & driveway • landscaped garden • gas central heating & double glazing • NHBC guarantee

Description

Constructed by Redrow Homes and completed 6 years ago, this 3 bedroom semi-detached house has been built in the popular Letchworth design. The very well presented accommodation includes reception hall, living room, an impressive kitchen/dining room with double doors to the rear garden, utility cupboard, and a downstairs cloakroom. Upstairs, there are 3 good size bedrooms, and 2 bath/shower rooms, the master bedroom with en suite shower room and built-in wardrobes. Outside, there is a driveway comfortably providing parking for 2 cars, and a good size single garage. At the rear, there is a landscaped garden with an elevated seating area, ideal for relaxing and entertaining. The property further benefits from gas central heating, double glazing, and a New Home Build Guarantee.

Further Information:

Local Authority Tewkesbury Borough Council. **Tax Band D.** **Electricity** Mains. **Water** Mains. **Sewerage** Mains. **Heating** Gas Central Heating. **Broadband** Connected to the property. Purchasers should carry out their own investigations regarding the suitability of these services.



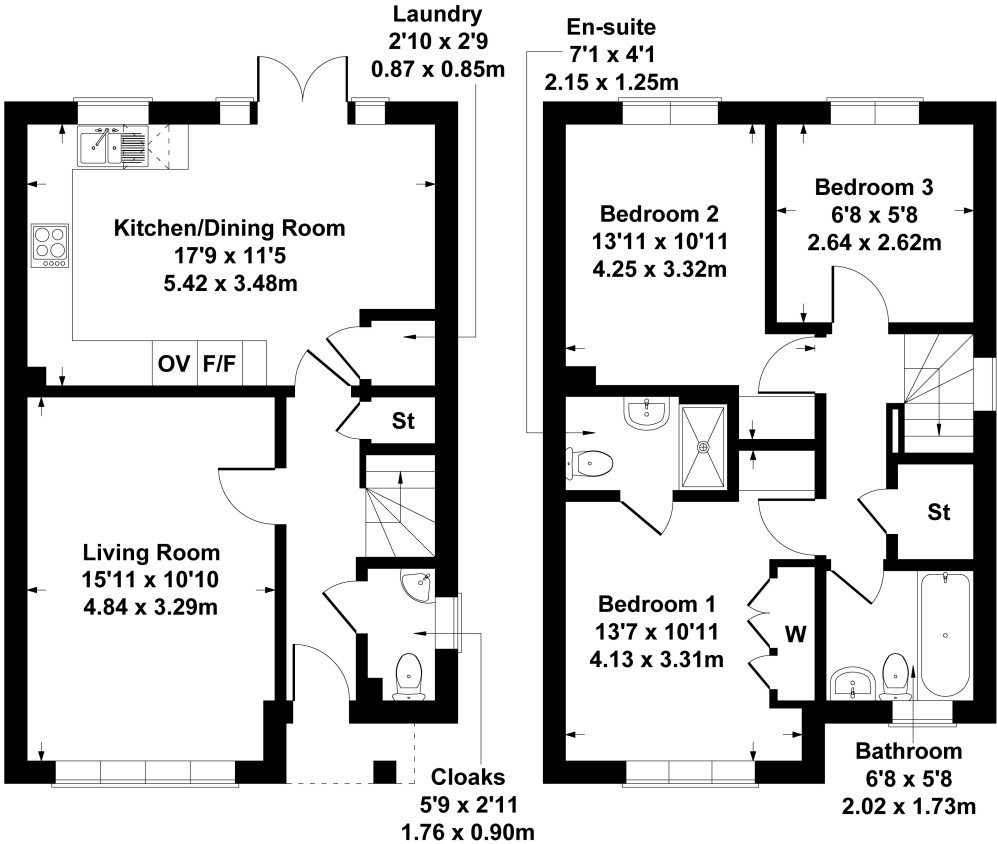


Situation

A highly sought after residential location, close to excellent primary and secondary schools (including The Leckhampton High School), glorious countryside, road links, and the Bath Road shopping area. Cheltenham is a vibrant Regency town, best known for its beautiful architecture, excellent shopping, and horse racing at the world famous Prestbury Park Racecourse. Cheltenham also plays host to the music, jazz, science, and literature festivals currently held in Imperial Gardens.

17 Honeysuckle Avenue

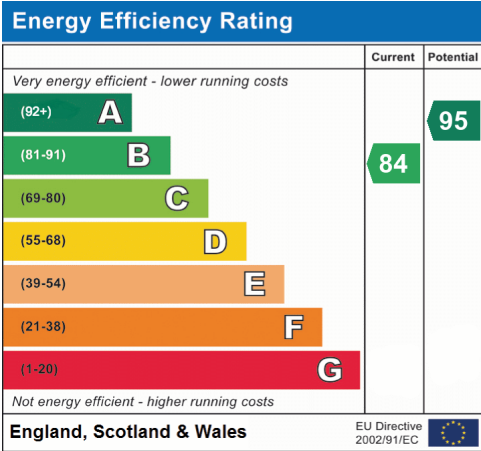
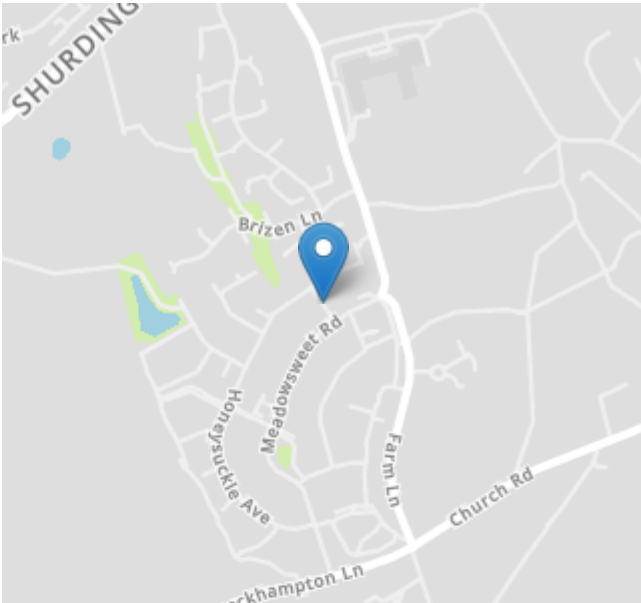
Approximate Gross Internal Area
947 sq ft - 88 sq m



SKETCH PLAN FOR ILLUSTRATIVE PURPOSES ONLY

All measurements walls, doors, windows, fittings and appliances, their sizes and locations, are approximate only. They cannot be regarded as being a representation by the seller, nor their agent.

Produced by Potterplans Ltd. 2024



Nick Griffith Estate Agents for themselves and for the vendors or lessors of this property whose agents they are, give notice that: (i) The particulars are produced in good faith, are set out as a general guide only and do not constitute part of any contract. (ii) No person in the employment of Nick Griffith Estate Agents has any authority to make any representation or warranty whatever in relation to this property.