

Metcalfe Court, John Harrison Way. SE10 0BZ **£1,600**

Located in the heart of Greenwich Millennium Village a spacious two bedroom apartment situated in the private residential block. The apartment briefly comprises of two double bedrooms, a family bathroom and open plan kitchen/reception providing access to balcony. The apartment further features 24 hour concierge and excellent transport links.

The property is offered furnished. No parking available.

Viewing by appointment with 1st avenue.

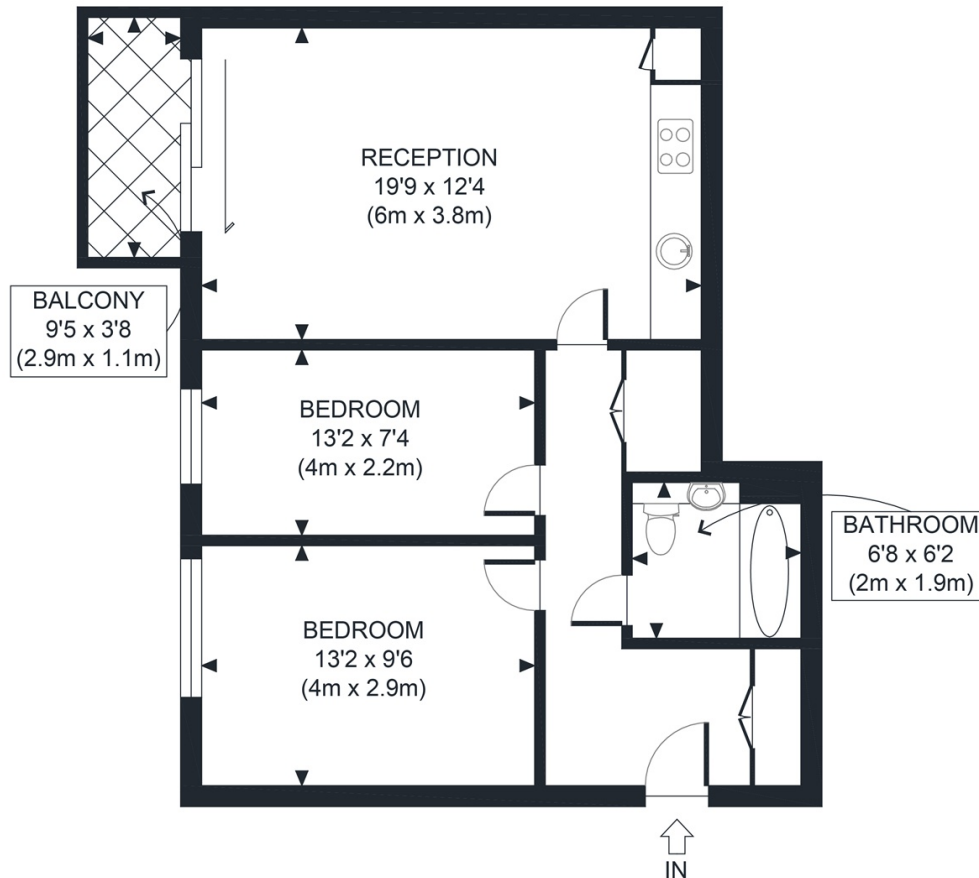
Call: 020 8293 8600

1st avenue, 128 Metcalfe Court, West Parkside, London SE10 0EL
email: info@1stavenue.co.uk

Flat 94 Metcalfe Court, John Harrison Way, London, . SE10 0BZ.

£1,600

1stavenue
Real Estate Services



FOURTH FLOOR
GROSS INTERNAL
FLOOR AREA 640 SQ FT

APPROX. GROSS INTERNAL FLOOR AREA 640 SQ FT / 59 SQM

Disclaimer: Floor plan measurements are approximate and are for illustrative purposes only. While we do not doubt the floor plan accuracy and completeness, you or your advisors should conduct a careful, independent investigation of the property in respect of monetary valuation

Copyright **photoplan360**

Viewing by appointment with 1st avenue.

Call: 020 8293 8600

1st avenue, 128 Metcalfe Court, West Parkside, London SE10 0EL
email: info@1stavenue.co.uk

1stavenue
Real Estate Services