



hastings
INTERNATIONAL

Tavistock Tower

£450,000

Tavistock Tower, Russell Place, London SE16 7PQ

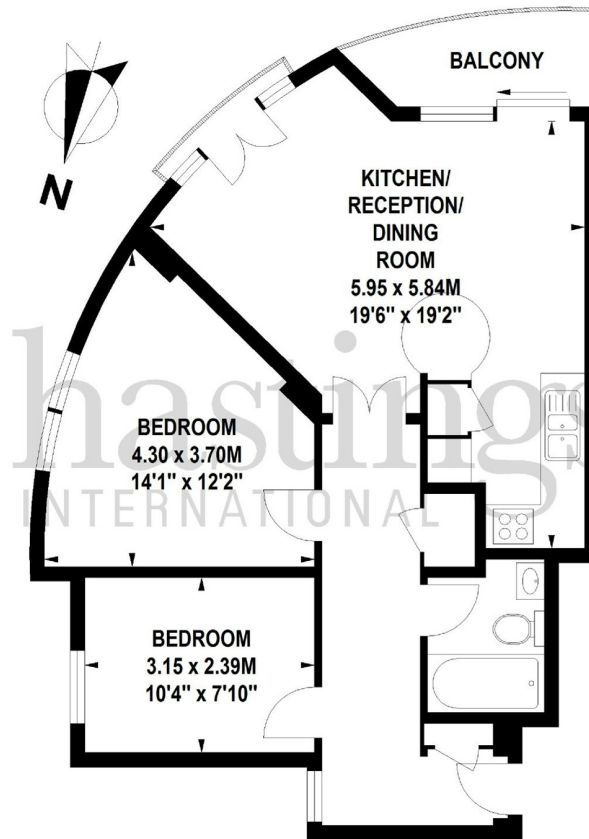
A well presented second floor dual aspect apartment with fabulous water views from all the principle rooms and private balcony, located within sought after Tavistock Tower, a sought after development overlooking Greenland Dock with secure allocated parking and access to a communal rooftop terrace. Canada Water and Surrey Quays stations are located moments away together with the river, Surrey Quays shopping center and the vast green spaces of Stave Hill Ecological Park.

This fabulous dual aspect apartment provides water views from all the principal rooms and comprises entrance hall with storage cupboards, impressive reception room with dining area and doors to private balcony providing superb views over Greenland Dock, second Juliette balcony, semi open plan fitted kitchen with work tops, integrated appliances and breakfast bar, master bedroom, guest bedroom two and bathroom. The apartment has the benefit of fabulous open water views together with secure allocated parking and access to communal terrace. Canada Water [Jubilee Line] and Rotherhithe [Overground] stations are both a short walk away together with excellent shopping facilities at nearby Surrey Quays Shopping Center.

- Tavistock Tower SE16
- Two Bedrooms
- Impressive Reception Room
- Secure Allocated Parking
- Chain Free
- Direct Water Views
- Private Balcony
- Communal Rooftop Terrace
- Second Floor
- Excellent Location

Tavistock Tower, Russell Plane, SE16

Approximate gross internal area
59 sq m / 635 sq ft



Second Floor

Illustration for identification purposes only, not to scale
All measurements are maximum, and includes wardrobes and window bays where applicable



