



78 Meadow Park, Braintree, Essex. CM7 1TD.

Michaels Property Consultants are pleased to launch to the market this well presented one bedroom, ground floor maisonette, occupying an enviable position within the ever-popular Meadow Park Development. Consisting of just 55 properties, this superb development offers an excellent range of amenities including a residents lounge, a library, and a guest suite for visiting friends & family. The internal accommodation comprises an entrance hall, a 21' living room/diner which also incorporates the fitted kitchen, a generous bedroom with fitted wardrobes, and a shower room. Offered for sale with no onward chain, early internal viewing is advised.

- One Bedroom Maisonette
- Over 55s Development
- Sought After Meadow Park Development
- 125 Year Lease From 2006
- Annual Service Charge - £3025.92
- Annual Ground Rent - £350
- Visiting Development Manager 9.00am - 4.30pm (Monday - Friday)
- No Onward Chain
- Open-Plan Living/Kitchen/Diner
- Residents Pavilion Featuring a Lounge, Library, Organized Social Events, and Guest Suite



Property Details.

Entrance Hall

Kitchen/Living/Diner



20' 7" x 11' 3" (6.27m x 3.43m)

Shower Room



7' 1" x 6' 3" (2.16m x 1.91m)

Bedroom



13' 4" MAX x 10' 7" MAX (4.06m x 3.23m)

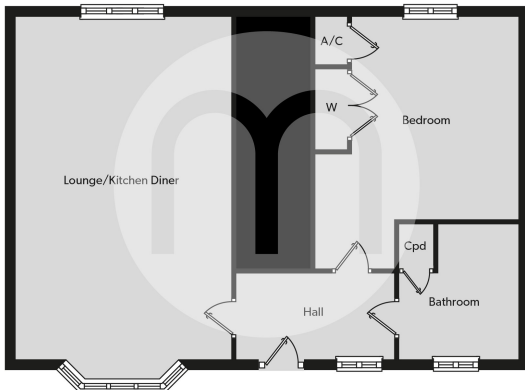
Communal Gardens



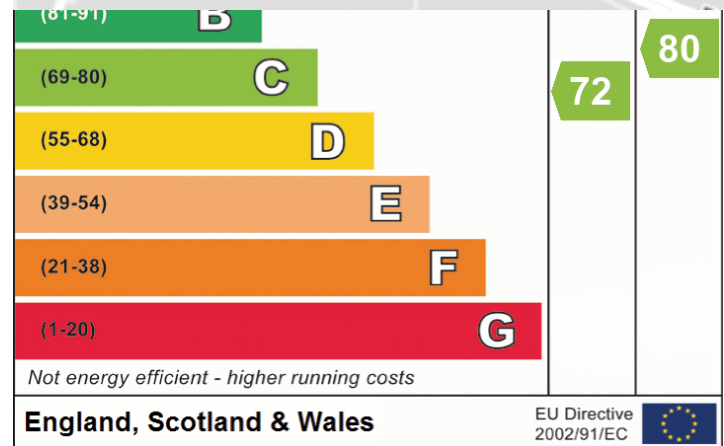
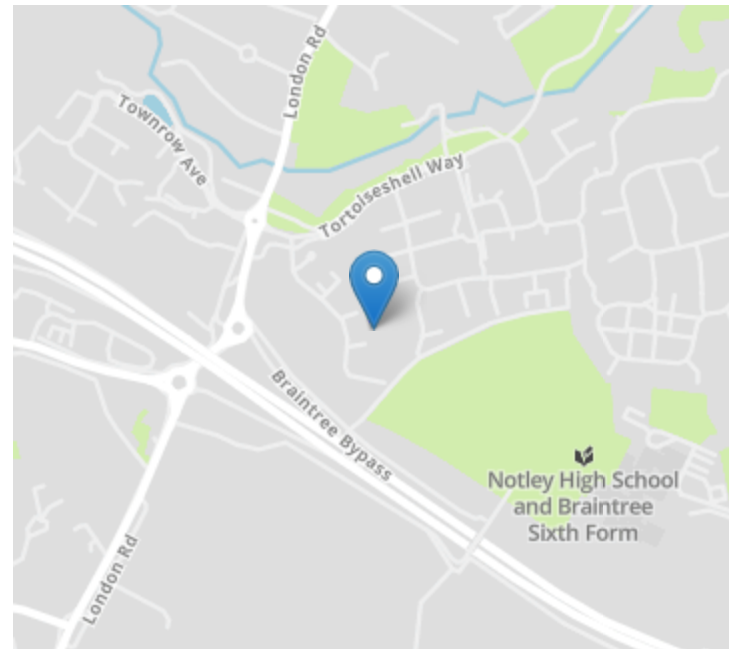
Property Details.

Property Details.

Floorplans



Location



We have not carried out a structural survey and the services, appliances and specific fittings have not been tested. All photographs, measurements, floor plans and distances referred to are given as a guide only and should not be relied upon for the purchase of carpets or any other fixtures or fittings. Gardens, roof terraces, balconies and communal gardens as well as tenure and lease details cannot have their accuracy guaranteed for intending purchasers. Lease details, service ground rent (where applicable) are given as a guide only and should be checked and confirmed by your solicitor prior to exchange of contracts.