



**Flat 10, Duncroft Manor Vicarage Road, Surrey, STAINES. TW18 4XX.**  
**2 Bedroom Apartment - £499,950 Share of Freehold**



# Flat 10, Duncroft Manor Vicarage Road, Surrey, STAINES. TW18 4XX.

01784 451458

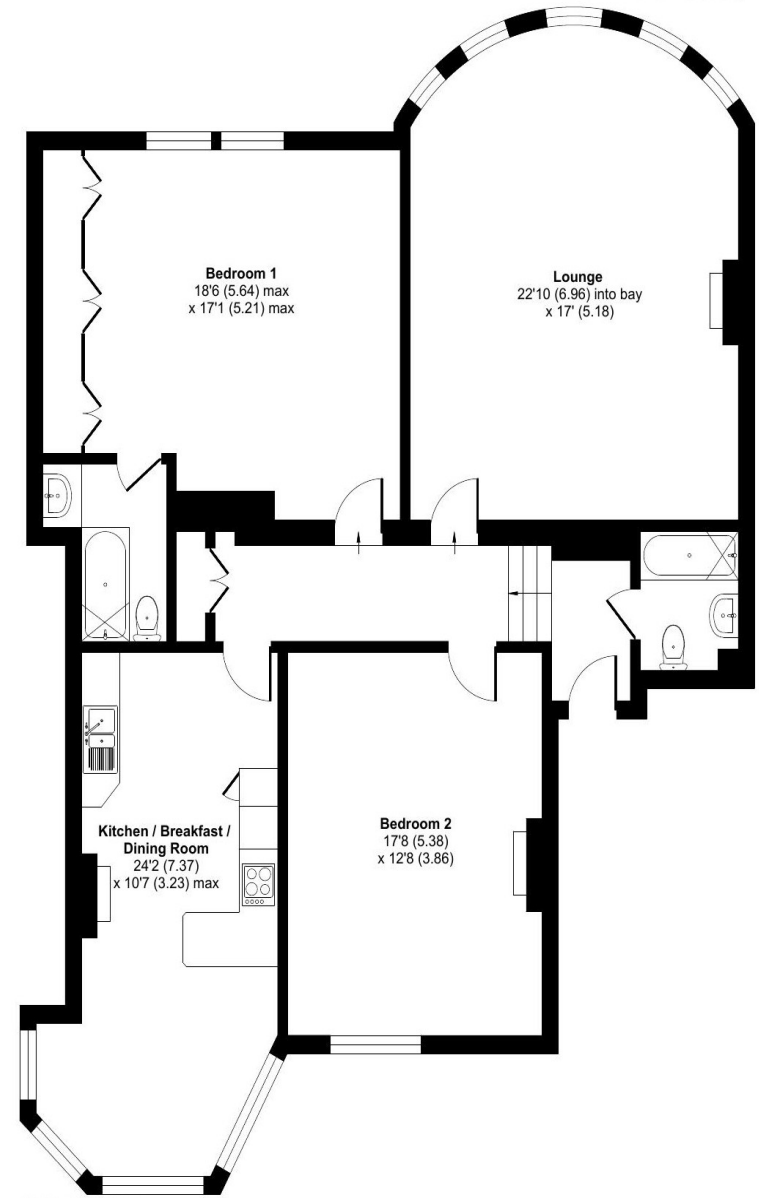
## 2 Bedroom Apartment - £499,950 Share of Freehold

**SHARE OF FREEHOLD | HUGELY SPACIOUS TWO BEDROOM, TWO BATHROOM APARTMENT WITHIN THIS STUNNING CONVERTED MANOR HOUSE ENJOYING VIEWS OVER EXTENSIVE COMMUNAL GROUNDS IDEALLY LOCATED FOR TOWN CENTRE, LOCAL MOTORWAY NETWORKS & HEATHROW AIRPORT. The property benefits from a spacious lounge, luxury kitchen/diner, two very large double bedrooms (en-suite to Bedroom 1), further modern white bathroom suite and allocated parking. No Onward Chain. Viewings Highly Recommended!**

### Key Features

**HUGELY SPACIOUS APARTMENT  
STUNNING CONVERTED MANOR HOUSE  
EASY ACCESS TO TOWN CENTRE, LOCAL MOTORWAY NETWORKS &  
HEATHROW AIRPORT  
EXTENSIVE COMMUNAL GARDENS  
EXTENSIVE CHARACTER FEATURES  
PARKING**

Approximate Area = 1400 sq ft / 130 sq m  
For identification only - Not to scale



**GREGORY BROWN**  
RESIDENTIAL SALES & LETTINGS





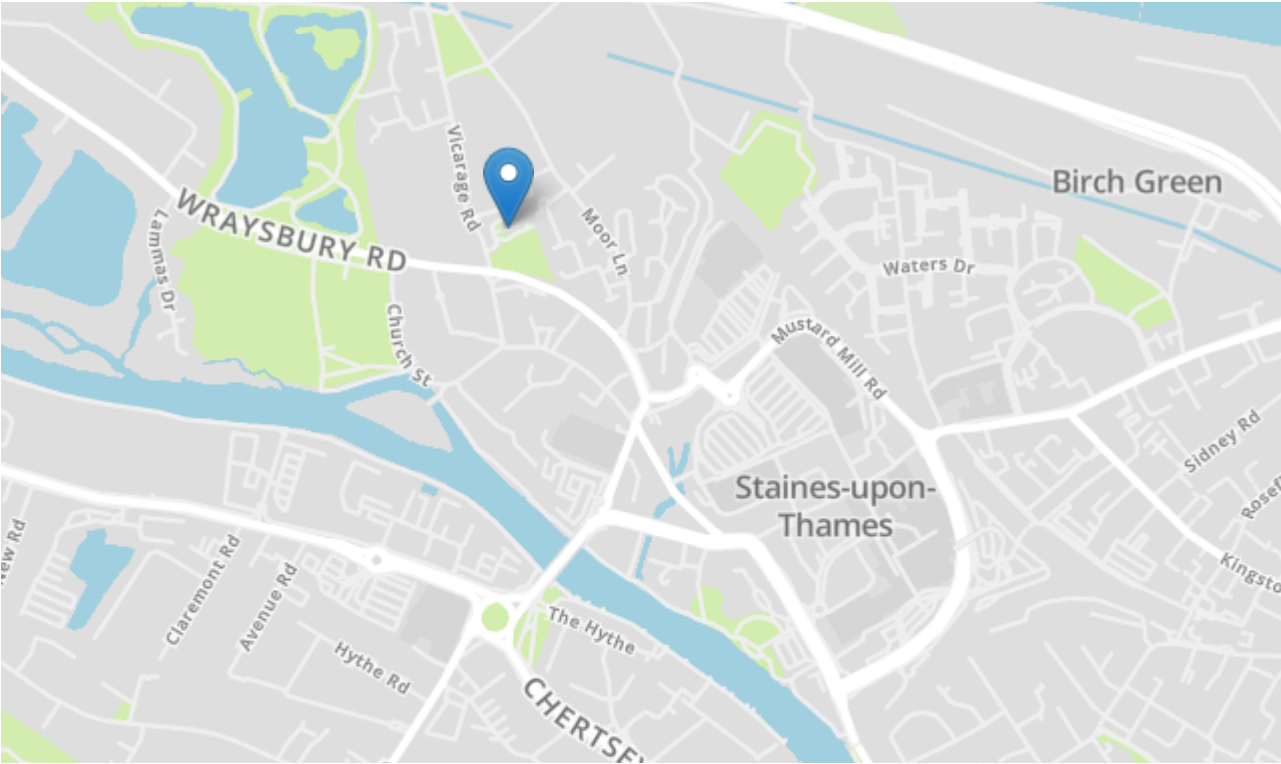






# Flat 10, Duncroft Manor Vicarage Road, Surrey, STAINES. TW18 4XX.

[gregory-brown.co.uk](http://gregory-brown.co.uk)



Tenure	Share of Freehold
Lease Term	970 Years Remaining
Ground Rent	To Be Confirmed
Service Charge	To Be Confirmed
Local Authority	Spelthorne
Council Tax	per year (Band E)

We have prepared these property particulars as a general guide to a broad description of the property. They are not intended to constitute part of an offer or contract. We have not carried out a structural survey and the services, appliances and specific fittings have not been tested. All photographs, measurements, floorplans and distances referred to are given as a guide only and should not be relied upon for the purchase of carpets or any other fixtures or fittings. Lease details, service charges and ground rents (where applicable) and council tax are given as a guide only and should be checked and confirmed by your solicitor prior to exchange of contracts. The copyright of all details, photographs and floorplans remain exclusive to Gregory Brown.

