



Josephine Court, Southcote Road, Reading.

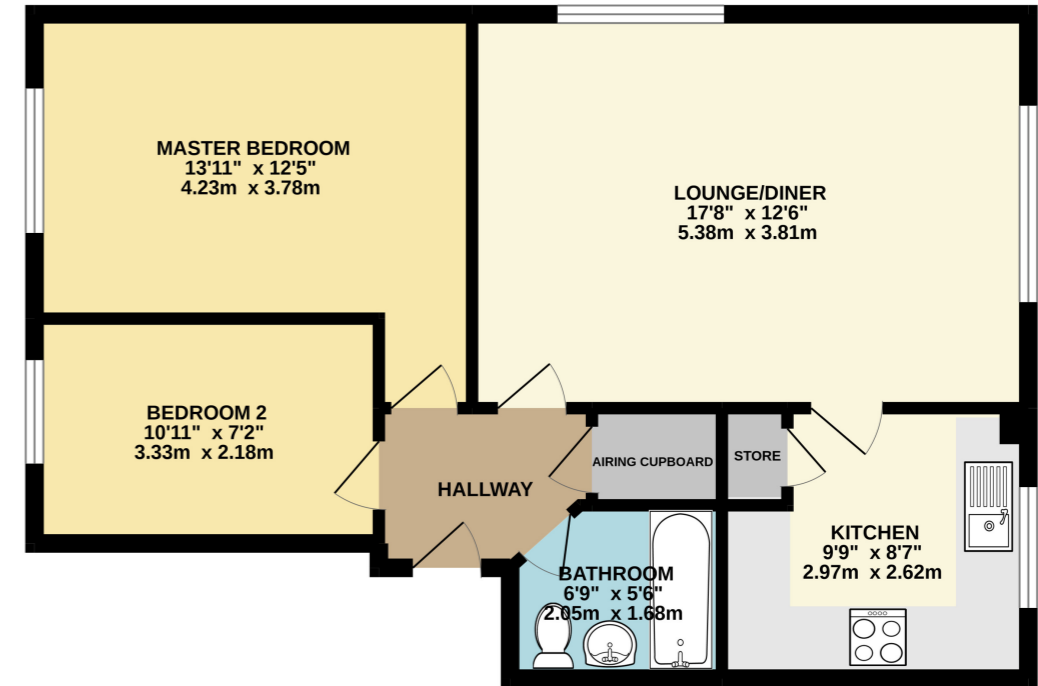
£225,000 Leasehold

Offered to the market with NO ONWARD CHAIN COMPLIATIONS is this well presented two bedroom first floor apartment, the property is a reasonable distance from Reading West train station, Prospect Park, Reading Town Centre, while having access to various local shops and amenities. Further accommodation includes a lounge/ dining room, separate refitted kitchen, and a family bathroom. Other features include double glazed windows, electric heating, communal gardens, and off-road parking.

- NO ONWARD CHAIN
- Two Double Bedrooms
- Lounge/ Dining room
- Separate Kitchen
- Double Glazed Windows
- Communal Gardens
- Close to Reading West Train Station
- Close to Town Centre



GROUND FLOOR  
603 sq.ft. (56.0 sq.m.) approx.



TOTAL FLOOR AREA : 603 sq.ft. (56.0 sq.m.) approx.  
Whilst every attempt has been made to ensure the accuracy of the floorplan contained here, measurements of doors, windows, rooms and any other items are approximate and no responsibility is taken for any error, omission or mis-statement. This plan is for illustrative purposes only and should be used as such by any prospective purchaser. The services, systems and appliances shown have not been tested and no guarantee as to their operability or efficiency can be given.  
Made with Metronix ©2022

Property Description

First Floor

Entrance Hall

Access to bedroom one and two, family bathroom, and the lounge/dining room, a storage cupboard, laminated wood flooring.

Lounge/Dining Room

17' 8" x 8' 7" (5.38m x 2.62m) Rear and side aspect double glazed windows, access to kitchen, TV point, telephone point, laminated flooring, electric radiator.

Refitted Kitchen

9' 9" x 8' 7" (2.97m x 2.62m) Side aspect double glazed window, a range of base and eye level units, fitted electric hob with extractor fan overhead with separate electric oven, , single bowl with drainer, fitted fridge freezer, space for dishwasher and plumbing for washing machine, separate pantry, tiled flooring.

Bedroom One

13' 11" x 12' 5" (4.24m x 3.78m) Side aspect double glazed window, electric radiator, laminated flooring.

Bedroom Two

10' 11" x 7' 2" (3.33m x 2.18m) Side aspect double glazed window, Laminated flooring, electric radiator.

Bathroom

6' 9" x 5' 6" (2.06m x 1.68m) Panel enclosed bath with separate electric shower, low level WC, wash hand basin housed by vanity unit, heated towel rail, tiled flooring.

Outside

Communal Garden

Communal Parking

Lease Information

Lease Information

Lease Term - Approx. 174 Years  
Ground Rent - £0 per year  
Service Charge - £100 per month

Council Tax Band

B

