

Jack Taggart & Co

RESIDENTIAL SALES

PRESTON DROVE, BN1 6LA

£1,100 PCM

PRESTON DROVE, BN1 6LA

Jack Taggart & Co are delighted to offer for rent this furnished, raised ground floor flat situated opposite Preston Park. The property will be available from the 10th Feb and pets are considered.

Approaching the building there is a traditional tiled path and steps up to the main door. Upon entering the property, your eyes are guided straight into your large living area which boast high ceilings and views of the park through your large, south facing sash windows. The living space is also fitted with a feature Victorian fireplace and has a modern finish with a grey and white theme.

In the lounge we ave a large two seater sofa, shabby chic style dining table with wooden benches on each side, wooden coffee table, drinks trolley and wooden drawer cabinet with freestanding television.

The bedroom is a well-proportioned double which also boasts high ceilings and character with another stunning Victorian fireplace and is carpeted throughout the bedroom. The bedroom is furnished with a double bed, large wardrobe, bedside table and freestanding chair.

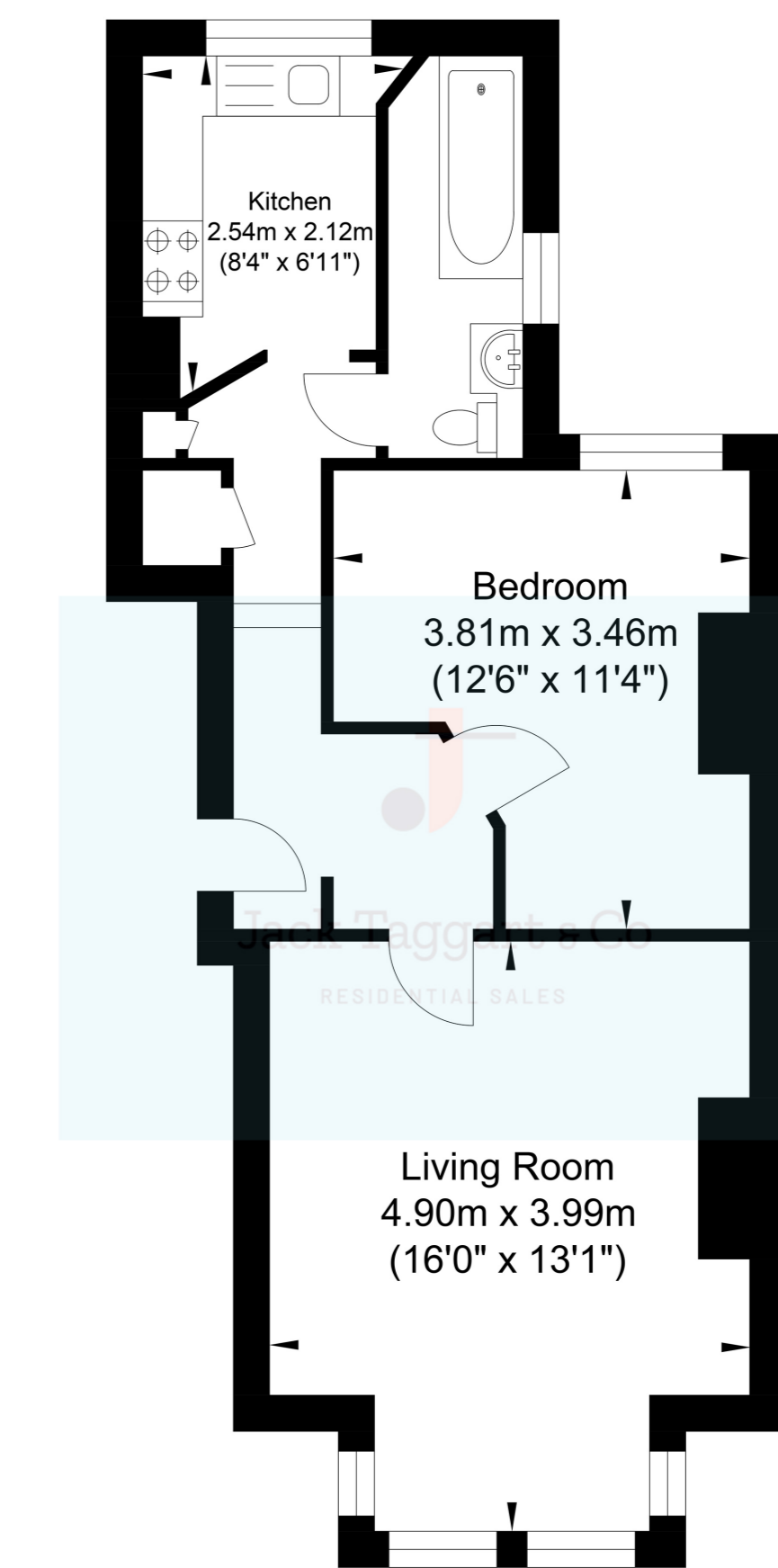
Through the hallway we have the modern white bathroom suite which includes a shower over bath, W/C, hand basin and vanity unit.

Finally to the rear of the property we have the kitchen which has a smeg style fridge freezer, washing machine, oven, 4 ring hob, Nespresso coffee machine and kettle.

This desirable property main feature is the impeccable views of the park, gas central heating and ample storage throughout.

Please note: Furniture is not the same as the furniture in the photos.

Preston Drive



Approximate Floor Area
493.41 sq ft
(45.84 sq m)

Approximate Gross Internal Area = 45.84 sq m / 493.41 sq ft
Illustration for identification purposes only, measurements are approximate, not to scale.
Copyright GDImpact 2020



Jack Taggart & Co

RESIDENTIAL SALES