



Trentway Close,  
Bucknall



01782 970222

[hello@oneagencygroup.co.uk](mailto:hello@oneagencygroup.co.uk)



£120,000

Semi detached bungalow offered with no chain involvement, situated in a popular cul de sac location convenient for access into Hanley city centre. The property does require updating but benefits from garage, carport and off road parking.





### Entrance Hallway

Radiator, door to front.

### Kitchen

2.84m x 2.66m (9' 4" x 8' 9") Fitted kitchen units, stainless steel sink and drainer unit, two radiators, built in storage area, double glazed window to side, door to side.

### Living Room

5.78m x 3.48m (19' 0" x 11' 5") Radiator, gas coal effect fire. Double glazed window to the front.

### Rear Lobby

Built in storage area with radiator and wall mounted boiler. Access to loft.

### Bathroom

Double glazed frosted window to the side, bathroom suite comprising of panelled bath with electric shower over, WC and hand wash basin. Radiator. Tiled walls.

### Bedroom 1

3.39m x 2.98m (11' 1" x 9' 9") Radiator, double glazed window to rear, fitted wardrobes.

### Bedroom 2

2.70m x 2.87m (8' 10" x 9' 5") Double glazed sliding doors to rear, radiator, fitted

### Outside

Ample off road parking with garage and carport. Gardens to front and rear.

### Garage

5.09m x 2.72m (16' 8" x 8' 11")

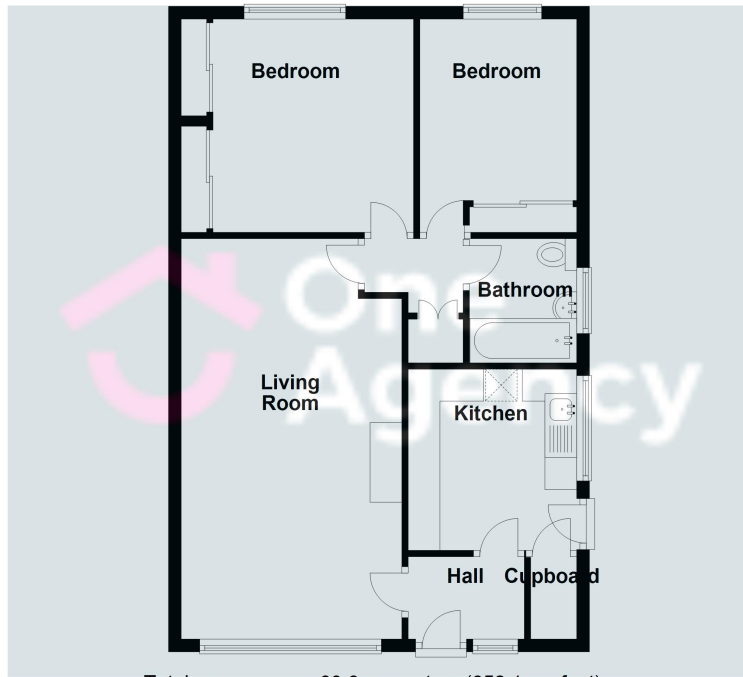
### Agents Notes

We understand that the sale is subject to the grant of probate which has now been received.



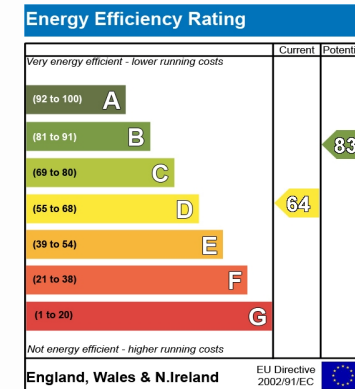
### Ground Floor

Approx. 60.6 sq. metres (652.1 sq. feet)



Total area: approx. 60.6 sq. metres (652.1 sq. feet)

We accept no responsibility for any mistake or inaccuracy contained within the floorplan. The floorplan is provided as a guide only and should be taken as an illustration only. The measurements, contents and positioning are approximations only and provided as a guidance tool and not an exact replication of the property.  
Plan produced using PlanUp.



OneAgency, 9 & 10 Ridge House Drive, Festival Park, Stoke-on-Trent, ST1 5SJ

01782 970222

hello@oneagencygroup.co.uk

Every attempt has been made to ensure accuracy, however, all measurements are approximate and for illustrative purposes only. **Not to scale.**

In accordance with The Consumer Protection from Unfair Trading Regulations 2008 the following particulars have been prepared in good faith and they are not intended to constitute part of an offer or contract. We have not carried out a structural survey and the services, appliances and specific fittings have not been tested. All photographs, measurements, floor plans and distances referred to are given as a guide only and should not be relied upon for the purchase of carpets or any other fixtures and fittings. Lease details, service charges and ground rent (where applicable) are given as a guide only and should be checked and confirmed by your Solicitor prior to exchange of contracts.