

SOLE
AGENT

Apartment 3, Seabright

The Strand | St Peter Port |

This spacious ground floor apartment is located in a highly desirable area of St Peter Port, on a quiet lane with the town centre a short stroll away. The most impressive aspect is the breathtaking view of the sea and neighbouring islands, which is on show from all key rooms. Accommodation comprises large open plan kitchen/lounge/diner, study area, double bedroom with dressing room and a bathroom. This property would suit a professional couple/single person. Regret no children, pets or smokers. Available from April 2025. Available for a 18 month lease.

£1,850pcm

1 BEDROOM

1 BATHROOM

1 RECEPTION

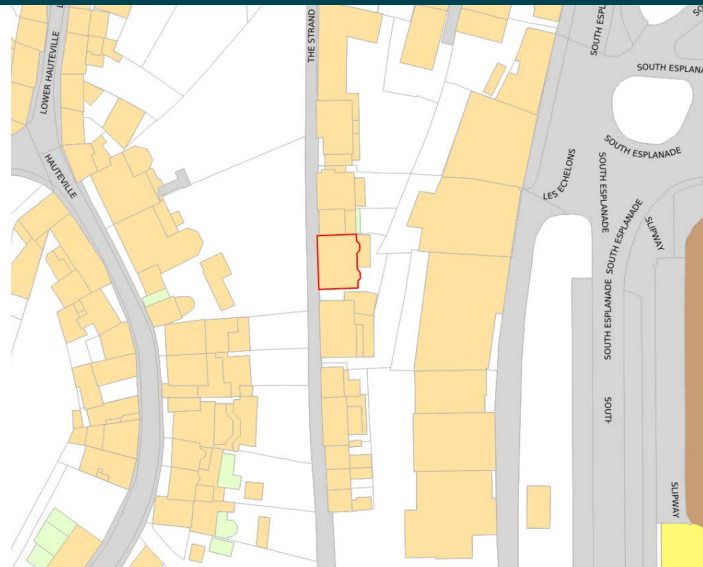
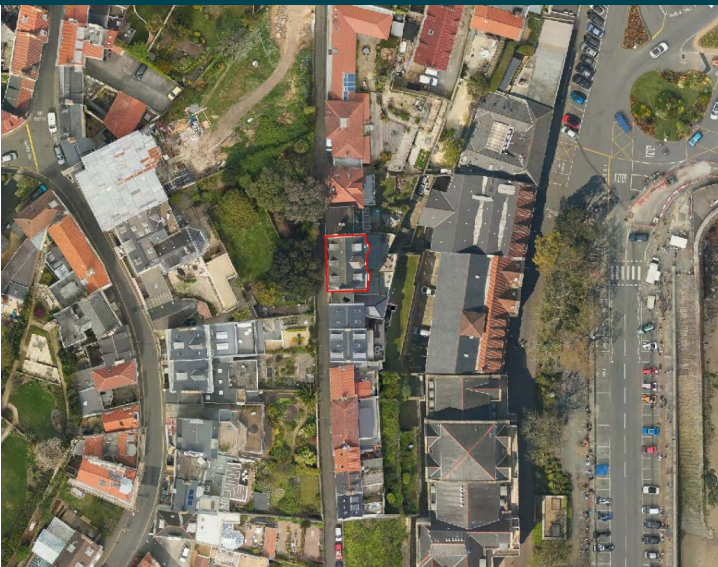
PHOTOS



PHOTOS



SPECIFICATIONS



Entrance Hall

18' 6" x 5' 11" (5.64m x 1.81m)

Study

9' x 9' 10" (2.75m x 3.00m)

Lounge

17' 6" x 15' (5.34m x 4.58m)

Kitchen/Dining Room

14' 10" x 10' 1" (4.52m x 3.07m)

Master Bedroom

17' 1" x 12' 10" (5.20m x 3.92m)

Dressing Room

7' 10" x 7' 7" (2.40m x 2.30m)

Bathroom

7' 3" x 6' 11" (2.22m x 2.10m)

PRICE INCLUDES

Curtains, carpets and light fittings. Extendable dining table with 3 chairs.

SPECIAL FEATURES

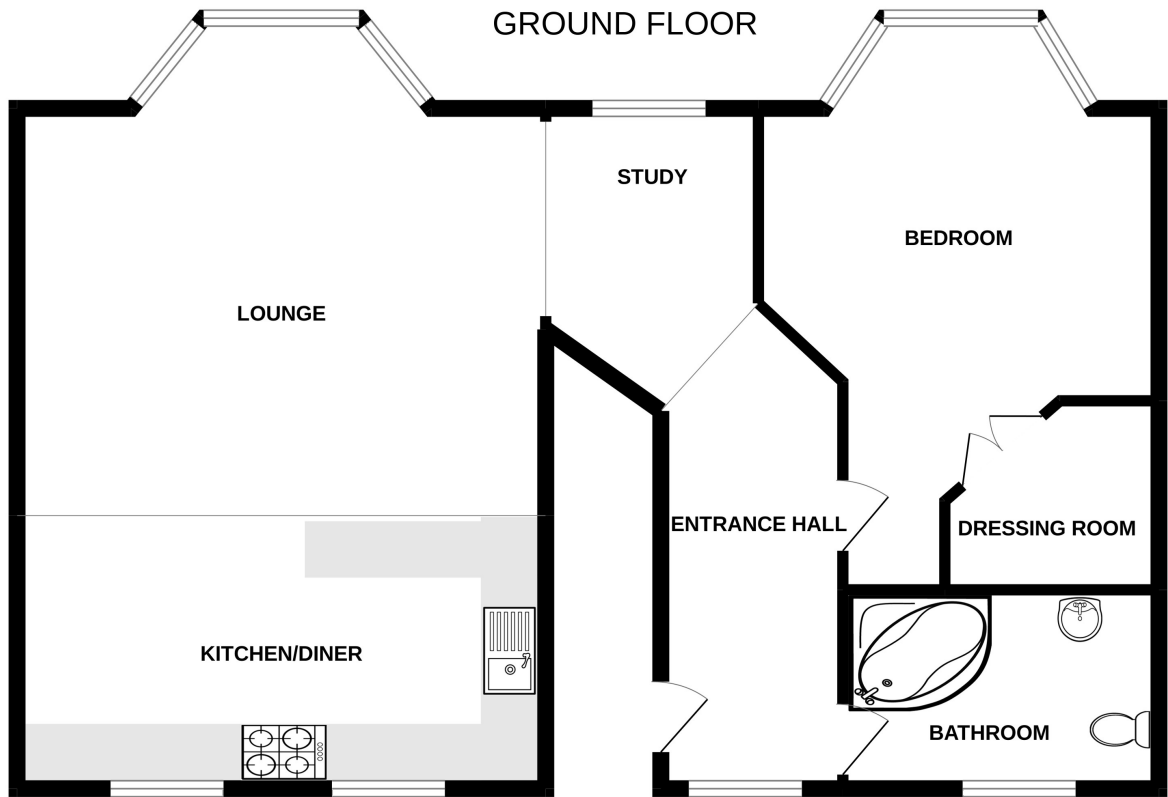
- Stunning sea and neighbouring island views
- High ceilings
- Quiet location
- Dressing room

SERVICES

Mains drainage, water and electricity.

APPLIANCES INCLUDED

- Neff oven
- Neff hob
- Extractor fan
- Integrated Neff dishwasher
- Integrated fridge
- Integrated freezer
- Integrated candie washer/dryer
- Miele microwave



SEABRIGHT

Whilst every attempt has been made to ensure the accuracy of the floorplan contained here, measurements of doors, windows, rooms and any other items are approximate and no responsibility is taken for any error, omission or mis-statement. This plan is for illustrative purposes only and should be used as such by any prospective purchaser. The services, systems and appliances shown have not been tested and no guarantee as to their operability or efficiency can be given.
Made with Metropix ©2022