



**£1,750 pcm**  
2 bedroom flat

Leahurst Road  
Hither Green

# Read all about it...

A delightful two-bedroom flat on Leahurst Road in the heart of Hither Green. Situated just 0.3 miles to Hither Green Station, providing easy access to central London and surrounding areas, as well as being within easy reach of local amenities including cafes, restaurants, shops and parks.

Internally the property features a spacious lounge, two bedrooms, a kitchen/diner and a bathroom. The property also benefits from a private garden - perfect for the summer months. Offered to the market unfurnished and available 19th February.

Call now to arrange a viewing!

## FIRST FLOOR

### Lounge

16' 2" x 13' 1" (4.93m x 3.99m)

Double glazed windows to front, ceiling pendant light, electric heater with stone effect, alcove storage cupboards and shelving, radiator, wood flooring.

### Kitchen/Diner

11' 3" x 10' 11" (3.43m x 3.33m)

Double glazed window to side, spotlights, fitted kitchen, sink with miter tap, 4 ring electric hob, integrated oven, extractor hood, integrated fridge, integrated freezer, washing machine.

### Bedroom

11' 3" x 10' 5" (3.43m x 3.17m)

Double glazed window to rear, ceiling pendant light, built in wardrobes, radiator, fitted carpet.

### Bedroom

7' 11" x 7' 5" (2.41m x 2.26m)

Double glazed window to side, ceiling pendant light, radiator, wood flooring.

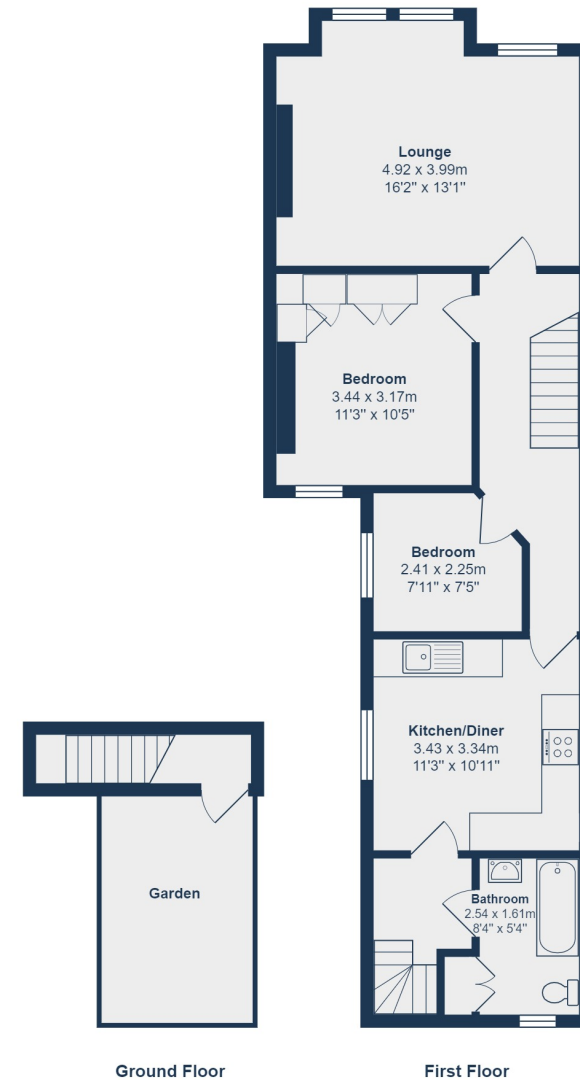
### Bathroom

8' 4" x 5' 4" (2.54m x 1.63m)

Double glazed window to rear, spotlights, tile enclosed bath with overhead and handheld showers attachments, low level W/C, wash basin with mixer tap and storage, heated towel rail, tiled flooring.

## OUTSIDE

### Private Garden



Total Area: 67.2 m<sup>2</sup> ... 724 ft<sup>2</sup> (excluding garden)

All measurements are approximate and for display purposes only

Like what you see?

Call 020 8852 0026 or email us at [hithergreen@stanfordstates.london](mailto:hithergreen@stanfordstates.london) to arrange a viewing or request further information

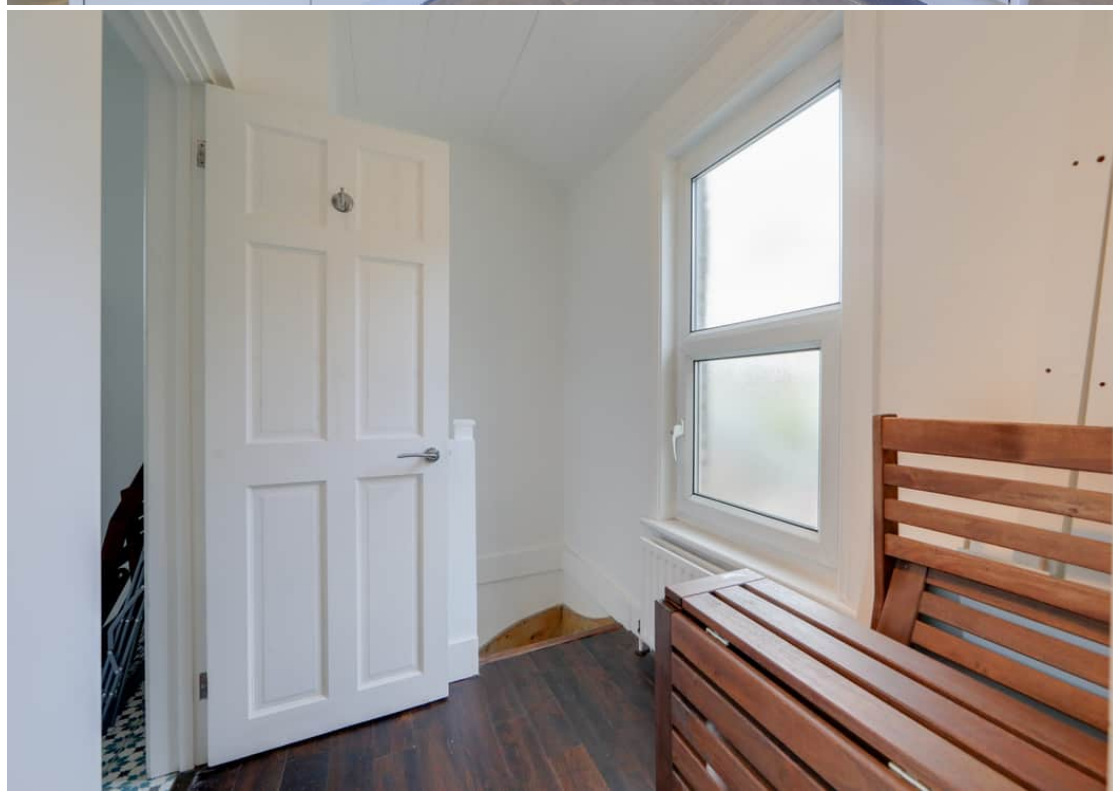
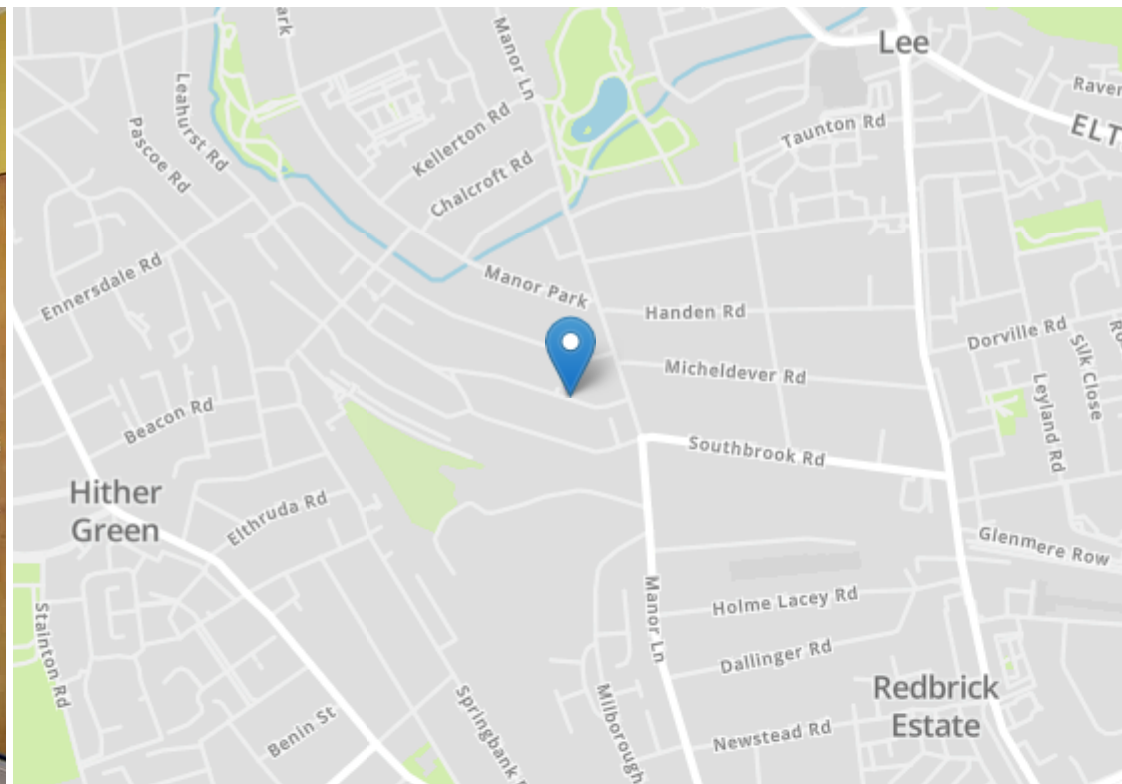
[www.stanfordstates.london](http://www.stanfordstates.london)



TWO BEDROOM FLAT  
PRIVATE GARDEN  
UNFURNISHED

FIRST FLOOR  
0.3 MI FROM HITHER GREEN  
STATION  
TOTAL AREA - 724SQFT





Robert Stanford Estates property particulars are produced in accordance with the Consumer Rights Act (2015) and should not be construed as a contract or offer. The contents of these property particulars are to provide a general illustration only and are inconsequential to any decisions to purchase a property. A potential buyer accepts that all representations made by these particulars are made in good faith on behalf of the seller and require verification by a buyers' legal and professional representatives prior to an exchange of contracts. We offer no guarantees for any structural component, service or appliance and while we make every effort to take accurate measurements and distances, they are illustrative only. Any reliance you place on information within these particulars is therefore strictly at your own risk.