

222 Christopher Crescent, Oakdale, POOLE, Dorset BH15 3HN

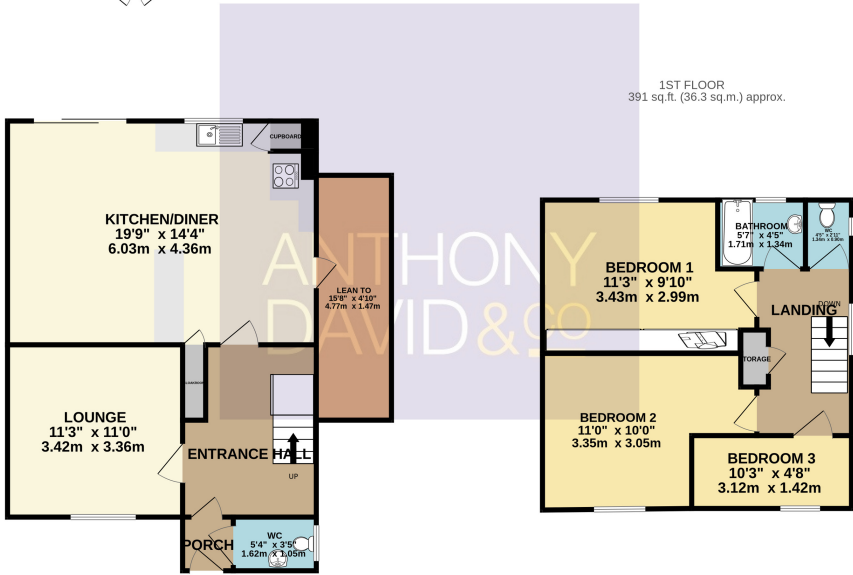
£350,000 Freehold

info@anthonydavid.co.uk
www.anthonydavid.co.uk
01202 677444

**** NO FORWARD CHAIN **** A super three bedroom end of terrace house situated in this quiet cul-de-sac location in the heart of Oakdale within walking distance of local schools, shops, parks and amenities. The property presents an ideal starter home and viewing is advised to appreciate not only its popular location but also the accommodation on offer, which comprises: lounge, modern kitchen/diner, downstairs cloakroom and family bathroom. Externally the property has a low maintenance paved garden housing a summer house/cabin with power and light. To the front the driveway provides off road parking for two cars. Further features include: integrated appliances and breakfast bar to kitchen, fitted wardrobes to bedroom one, gas central heating and UPVC double glazing. Nearby Schools - Stanley Green Infant Academy, Oakdale Junior School, Poole High School and St Edwards RC/CoE Secondary.

**ANTHONY
DAVID & CO**

GROUND FLOOR
784 sq.ft. (72.8 sq.m.) approx.



Entrance Hall Doors to

Lounge 11' 3" x 11' 0" (3.43m x 3.35m)

Kitchen/Diner 19' 9" x 14' 4" (6.02m x 4.37m)

Downstairs Cloakroom 5' 4" x 3' 5" (1.63m x 1.04m)

Landing Doors to

Bedroom One 11' 3" x 9' 10" (3.43m x 3.00m)

Bedroom Two 11' 0" x 10' 0" (3.35m x 3.05m)

Bedroom Three 10' 3" x 4' 8" (3.12m x 1.42m)

Bathroom 5' 7" x 4' 5" (1.70m x 1.35m)

Separate Cloakroom 4' 5" x 2' 11" (1.35m x 0.89m)

Summer House/Cabin 15' 7" x 11' 7" (4.75m x 3.53m)

Garden Paved

Driveway Off road parking x 2

Council Tax Band C

