

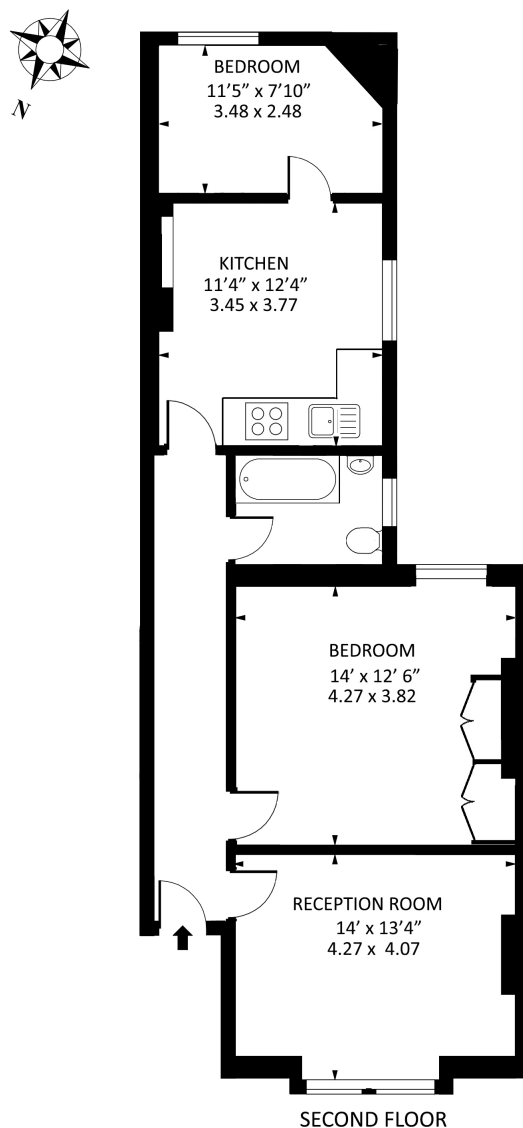


Cavendish Mansions, Mill Lane, London, NW6

£600,000

- Two Bedroom Apartment
- Share of Freehold
- Communal Courtyard
- Mansion Block
- Bright & Airy Throughout

Cavendish Mansions NW6



Approx gross internal area : 753 sq ft - 70 sq m

Measured in accordance with RICS guidelines. Every attempt is made to ensure accuracy
However all measurements are approximate.
The floor plan is illustrative purposes only and is not to scale
www.tomekphotography.co.uk

