



Century Tower, Chelmsford, Essex, CM2 0FQ

Council Tax Band D (Chelmsford City Council)



£210,000 Leasehold

ACCOMMODATION

Bond Residential are delighted to offer for sale this modern City centre apartment being sold with no onward chain.

The property offers an entrance hall with storage cupboards, open plan living/dining room with balcony access, fitted kitchen, two bedrooms and two bathroom/shower rooms. The building benefits from lift access and residents parking.

LOCATION

Chelmsford city centre offers a thriving nightlife with a selection of bars and a wide selection of places to eat from independent family restaurants to well known chain restaurants serving cuisines from around the world, Chelmsford features a comprehensive range of shopping facilities with its pedestrianised High Street, two shopping precincts and hugely popular Bond Street with John Lewis store.

Chelmsford is extremely popular with leisure enthusiasts with a selection of sports clubs at the local Chelmer Park, a selection of gyms including Riverside Ice & Leisure, there are a selection of golf clubs within the area and the nearby Hylands Park estate and Galleywood Common provide pleasant walks and open spaces.

Chelmsford is renowned for its educational excellence and alongside the local schools situated within close proximity, it offers two of the country's top performing grammar schools, Writtle agricultural college and Anglian Ruskin University.

Chelmsford's mainline station provides a direct service to London Liverpool St with a journey time as fast as 32 minutes, the property is also conveniently located within 2 miles of the A12 and A414 which provide access to the M25 and M11.

TENURE: Leasehold

LEASE: 150 Year Lease From 14th March 2014

SERVICE CHARGE: £4265.00 per annum

GROUND RENT: £350.00 per annum

150 Year Lease From 14th March 2014

£4265.00 Annual Service Charge

£350.00 ground rent

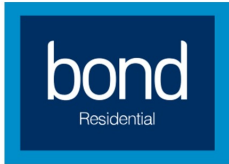
- Two Bathroom/Shower Rooms
- Residents Parking

- Two Bedrooms
- No Onward Chain

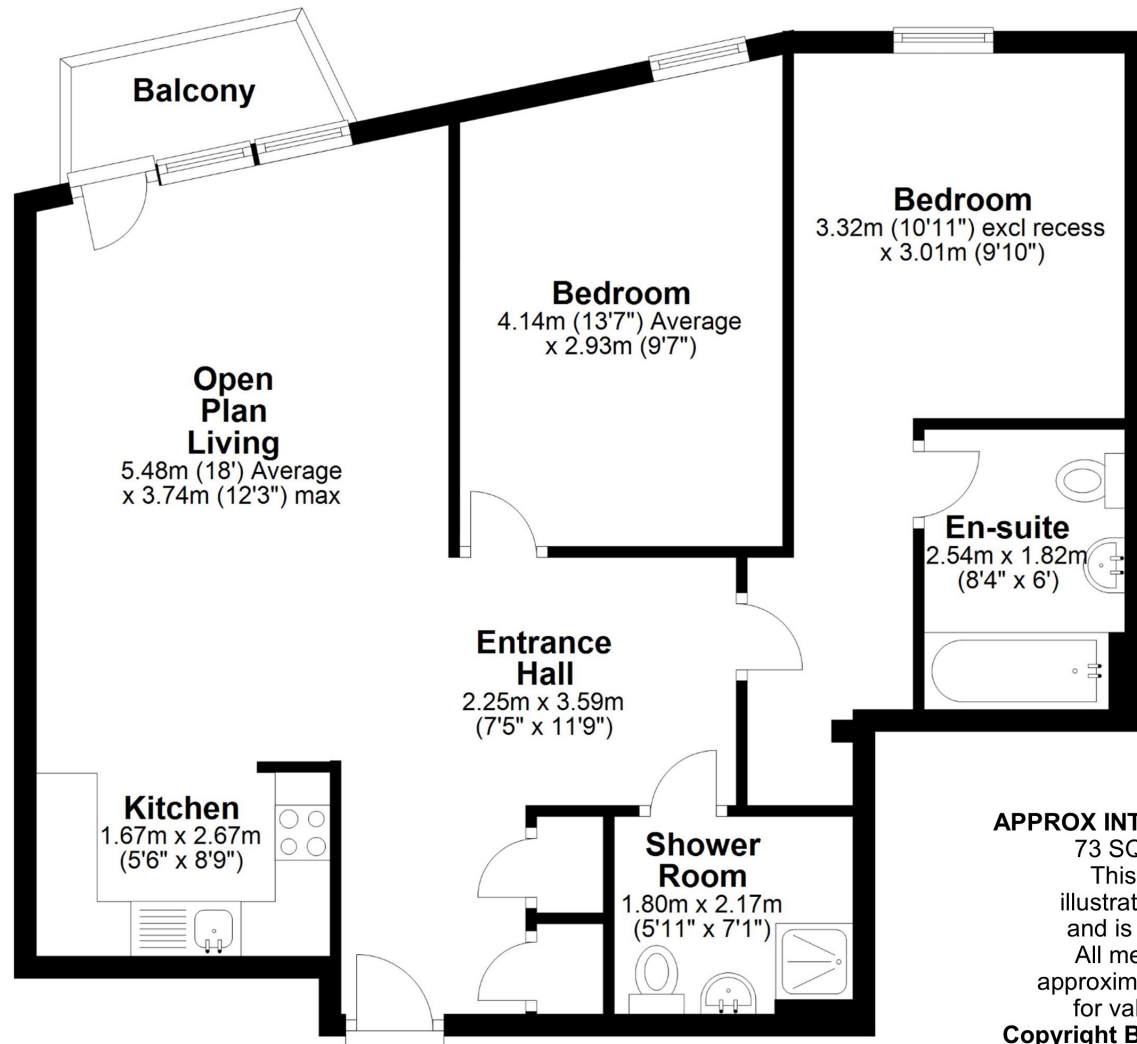








First Floor



APPROX INTERNAL FLOOR AREA
73 SQ M (790 SQ FT)
This floorplan is for illustrative purposes only and is **NOT TO SCALE**
All measurements are approximate **NOT** to be used for valuation purposes
Copyright Bond Residential 2023

78, New London Road,
Chelmsford, Essex, CM2 0PD
Telephone: 01245 500599
Website: www.bondresidential.co.uk

Consumer Protection from Unfair Trading Regulations 2008 and the Business Protection from Misleading Marketing Regulations 2008. Bond Residential have made every effort to ensure that consumers and/or businesses are treated fairly and provided with accurate material information as required by law. We have not tested any apparatus, equipment, fixture, fitting or any services and as such are unable to verify they are in working order, fit for their purpose, or within the ownership of the seller or landlord. Neither have we been able to check the legal documentation to verify the legal status of the property. We therefore advise potential buyers or tenants to verify these matters with their own solicitors or other advisers.

