

Butlass Close

High Littleton, Bristol, BS39 6HD

COOPER
AND
TANNER



£299,950 Freehold

 2  1  1 EPC D

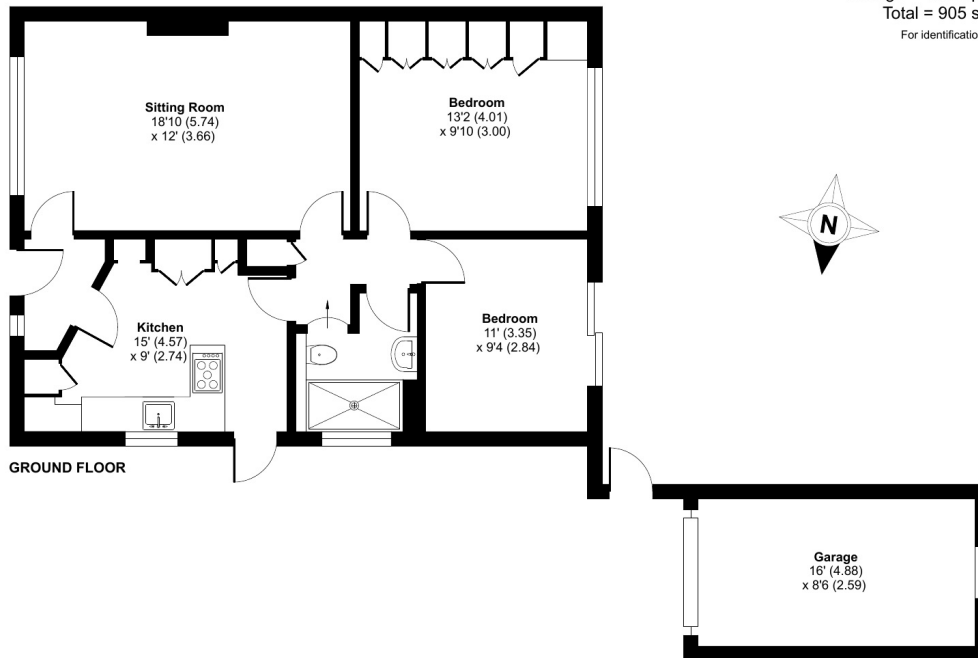
Description

A two bedroom semi detached bungalow located in a quiet cul de sac position with garage, driveway parking and a westerly facing garden. The property is being sold with no onward chain and is in need of some updating. In brief the accommodation comprises an entrance hall with doors into the lounge/diner and kitchen. The lounge/diner is a good size with feature fireplace, the kitchen has a range of fitted wall and base units with worktops over and integrated oven and hob. There are two double bedrooms, one having access to the rear garden and a shower room. Viewing recommended.



Butlass Close, High Littleton, Bristol, BS39

Approximate Area = 769 sq ft / 71.4 sq m
Garage = 136 sq ft / 12.6 sq m
Total = 905 sq ft / 84 sq m
For identification only - Not to scale



Floor plan produced in accordance with RICS Property Measurement Standards incorporating International Property Measurement Standards (IPMS2 Residential). © nichecom 2024. Produced for Cooper and Tanner. REF: 1181897



Features

- Semi detached bungalow in a quiet cul de sac location
- No onward chain
- Garage and driveway parking
- In need of some updating
- Gardens to the front and rear
- Fitted kitchen
- Good size lounge/diner
- Two bedrooms
- Shower room

Local Information

- Council Tax Band C
- Tenure Freehold
- EPC Rating D

MIDSOMER NORTON OFFICE

Telephone 01761 411010

14, High Street, Midsomer Norton, Somerset BA3 2HP

midsomernorton@cooperandtanner.co.uk

**COOPER
AND
TANNER**

Important Notice: These particulars are set out as a general outline only for the guidance of intended purchasers and do not constitute, nor constitute part of, an offer or contract. All descriptions, dimensions, reference to condition and necessary permissions for use and occupation, warranties and other details are given without responsibility and any intending purchasers should not rely on the matters stated or representations of fact but must satisfy themselves by inspection or otherwise as to the correctness of each of them.

