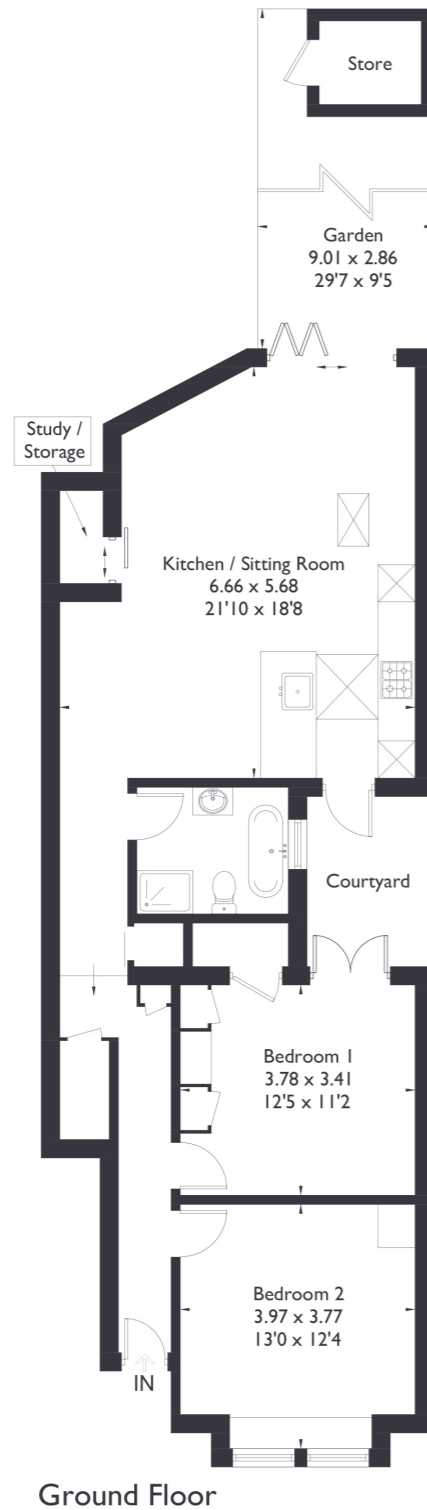


Darwin Road, W5

Approximate Floor Area = 84.0 sq m / 904 sq ft



2 BEDROOM FLAT

Darwin Road, W5
£635,000

Discover this wonderful and modern two bedroom, one bathroom ground floor garden flat located in the heart of Ealing. The property boasts fantastic, well presented interiors, with lots of natural light streaming in through the skylights. The open plan kitchen and living space seamlessly leads out to a generously sized garden, perfect for outdoor entertaining.

FEATURES

- Two Bedrooms
- One Bathroom
- Open Plan Kitchen Living Space
- Mount Carmel Catholic Primary School
- South Ealing Station
- South Ealing Amenities
- EPC Rating C



2 BEDROOM FLAT

Darwin Road, W5

The master bedroom features a gorgeous courtyard, offering a serene and private retreat.

Situated close to South Ealing station and local amenities, this home is also within the catchment area of Mount Carmel Primary School. Additionally, its proximity to the Great West Road provides excellent access for those driving into central London, making it a perfect choice for commuters. This beautifully lit and spacious flat truly offers the best of modern living in a prime location. EPC Rating C.

