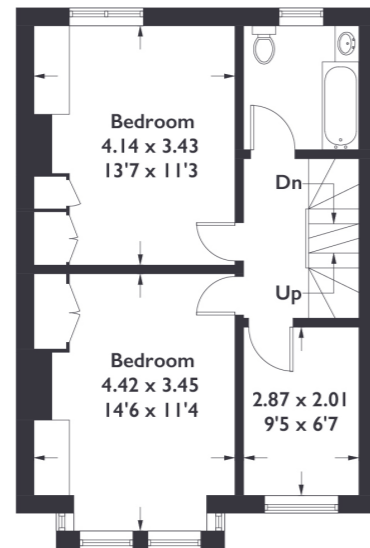


**Raymond Avenue, W13**

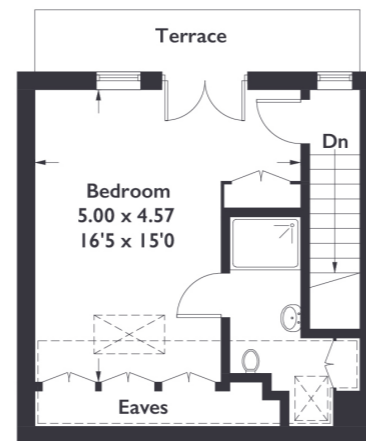
Approximate Gross Internal Area = 146.2 sq m / 1574 sq ft  
(Including Reduced Headroom)



Ground Floor



First Floor



Second Floor

= Reduced Headroom



4 BEDROOM HOUSE

**Raymond Avenue, W13**

£1,100,000

Nestled in one of Northfields quietest roads and within catchment of outstanding local primary and secondary schools is this substantial four bedroom family home benefitting from generous bedroom sizes and a south west facing private garden.

FEATURES

- Freehold
- Terraced Period House
- Four Bedrooms
- South West Facing Garden
- Period Features
- Built In Storage Throughout
- Fielding Primary School
- Elthorne Park High School
- Access to Balcony
- Northfields Station (Piccadilly Line)

Measured in accordance with RICS Code of Measuring Practice. To be used for identification and guidance purposes only. Whilst every care is taken in the preparation of this plan, please check all dimensions, shapes and compass bearings before making any decisions reliant upon them.



4 BEDROOM HOUSE

# Raymond Avenue, W13

£1,100,000

You are welcomed into a bright and generously sized reception room featuring a large bay window, built in shelving units and a period fireplace.

Through to the kitchen / diner, you will find ample amount of space both in the extension to the rear with a beautiful skylight and french doors leading out onto the south west facing garden which sees sunshine throughout the day. A modern WC and under stair storage complete the ground floor. The first floor features two great sized double bedrooms and a single / study room, with the addition of a family bathroom. The second floor comprises of a further double bedroom and ensuite with access out onto a balcony overlooking the garden. The property is well kept and includes a plethora of stylish features throughout.

Raymond Avenue is quiet and residential but only short walk away from all of the amenities that Northfield Avenue has to offer. It is an ideal location when wanting to be close to transport links (Northfields Station and Boston Manor Station both with access to the Piccadilly Line) and local schools, not to mention Oftsed Outstanding schools Fielding Primary School and Elthorne Park High School.

