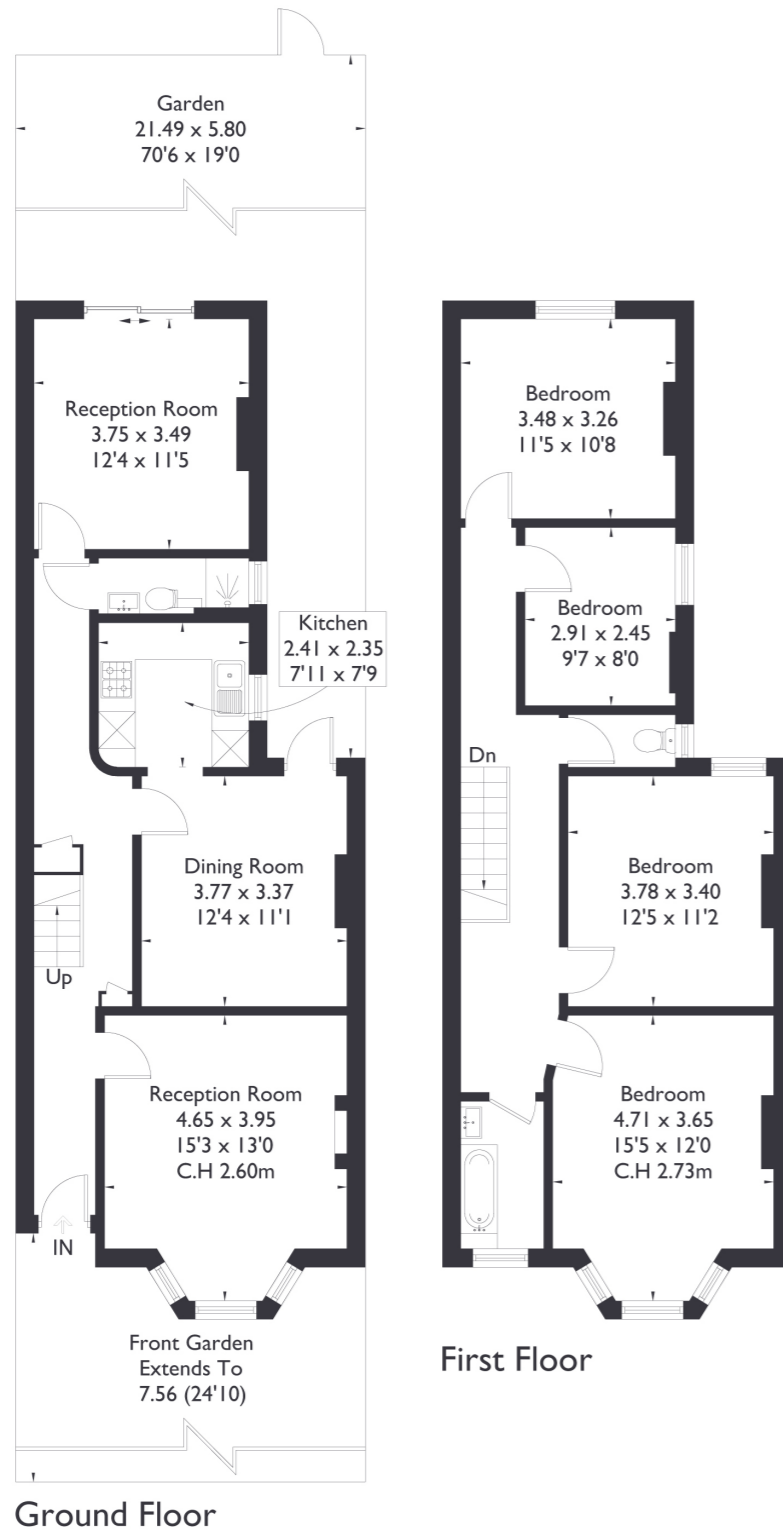


Windmill Road, TW8

Approximate Floor Area = 133.3 sq m / 1435 sq ft



4 BEDROOM HOUSE

Windmill Road, TW8  
£799,950

Welcome to this stunning terraced property nestled in a fantastic location bordering Brentford and Ealing. This wonderful home features four spacious bedrooms, offering ample accommodation for a growing family. With one shower room, one separate W/C, and a bathroom, convenience meets functionality.

Beyond the existing layout, the property holds exciting potential with the possibility to extend into the loft STPP, allowing for further tailored to suit your needs.

FEATURES

- Four Bedrooms
- One Bathroom/ WC / Bathroom
- Separate Kitchen/Dining
- Ealing Fields School (Ofsted Outstanding)
- Gunnersbury Catholic School
- Northfields/ Brentford Station
- Northfields Amenities



4 BEDROOM HOUSE

## Windmill Road, TW8

Step inside to discover generously sized rooms flooded with natural light.

The separate kitchen and living areas offer versatility, while the charming dining room opens onto the wonderfully large garden, perfect for outdoor activities. With its southwest facing orientation, the garden enjoys abundant sunlight throughout the day. Situated within the catchment area of Mount Carmel Catholic Primary School, ideal for families. Conveniently located near Northfields amenities and with easy access to the Great West Road, commuting is effortless. Brentford and Northfields stations are just a short walk away. EPC Rating E.

