



**Mansion Gardens  
Huddersfield  
West Yorkshire  
HD4**

**Offers in Excess of £382,000**

**bettermove**

# Mansion Gardens

## Huddersfield

Bettermove are proud to present this 4 bedroom detached house in Huddersfield.

This property benefits from double glazing, and gas central heating throughout, with off road parking available via the driveway and garage.

The council tax band is D.

This is a leasehold property with 944 years remaining on the lease; the round rent is £15.00 per annum.

This beautifully presented home offers spacious living throughout. The ground floor features a bright and welcoming living room, stylish open-plan fitted kitchen and dining area, along with a convenient WC. Upstairs, you'll find four generously sized bedrooms, including a master with en-suite, plus a contemporary family bathroom. Outside, the property enjoys a private, tiered rear garden with both patio and lawn areas, perfect for relaxing or entertaining. Completing the space is a luxurious seven-person hot tub, providing the perfect spot to unwind and enjoy the warmer months.

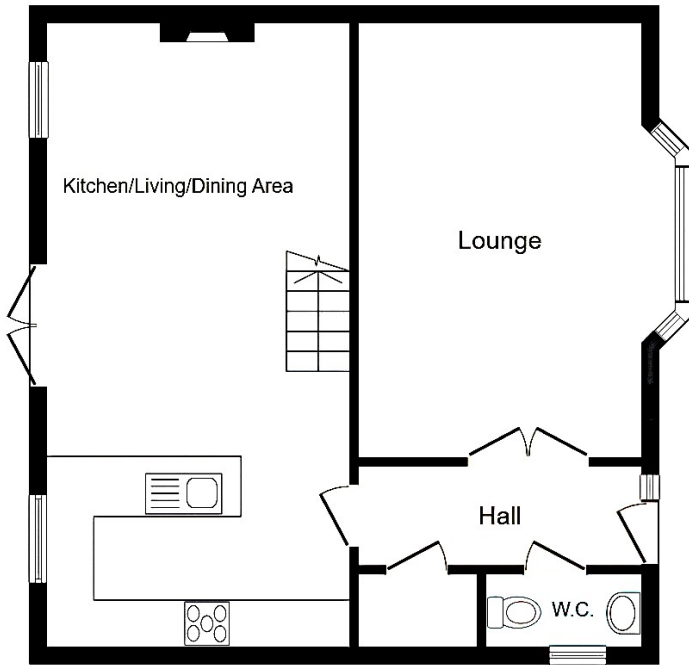
Located in the popular town of Huddersfield, the property is close to a range of amenities, including shops, supermarkets, restaurants, pubs, and schools. Excellent transport links can be found from Berry Brow (0.5 mile) and Lockwood (1.4 miles) Train Stations, a variety of local bus routes, and quick access to the M62.

This exciting opportunity should not be missed! All enquiries can be made through Bettermove.

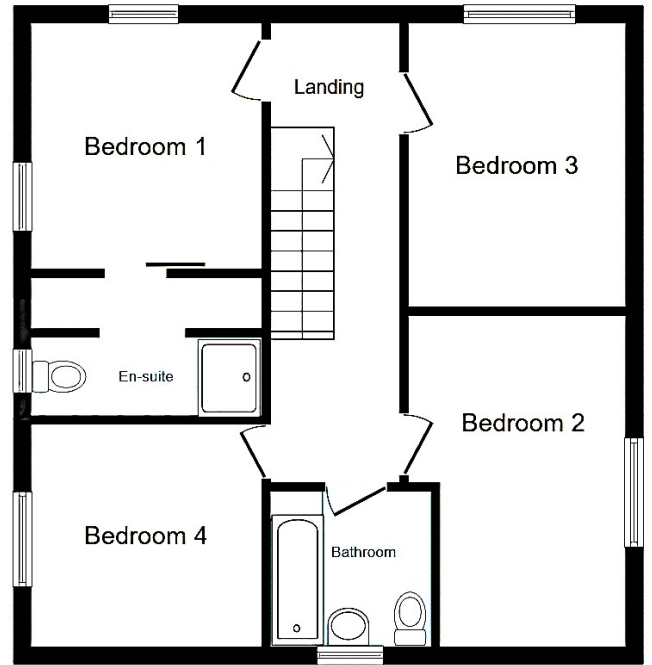
---

Reserve It Now

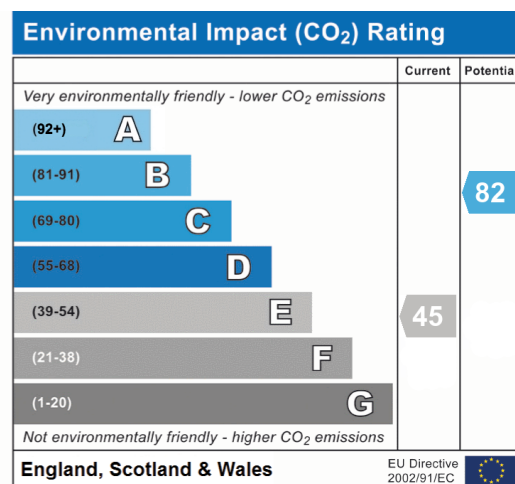
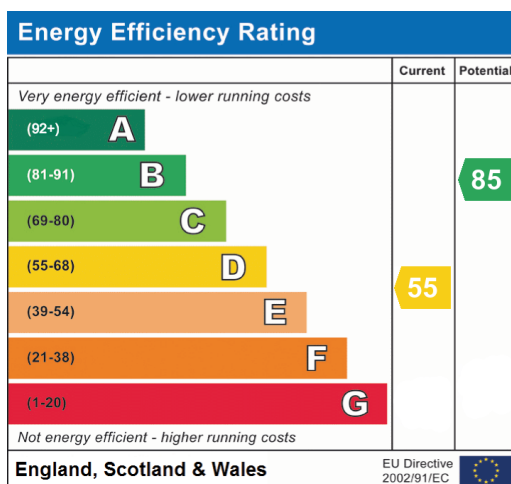




**Ground Floor**



**First Floor**





20-22 Bridge End, Leeds, LS1 4DJ  
t: 0330 004 0050 e: [hello@bettermove.co.uk](mailto:hello@bettermove.co.uk)  
[www.bettermove.co.uk](http://www.bettermove.co.uk)