



Day & Co
ESTATE AGENTS

28 Cavendish Street
Keighley
BD21 3RG



Briar Lea, Bromley Road,
Bingley, West Yorkshire, BD16
4DA

£335,000

T: 01535 664609

W: www.dayandcoestateagents.co.uk

E: keighley@dayandcoestateagents.co.uk

- EPC Rating Is B
- Four Bedrooms & Master En-Suite
- Excellent Access To Bingley Town Centre/Train Access To Leeds & Skipton

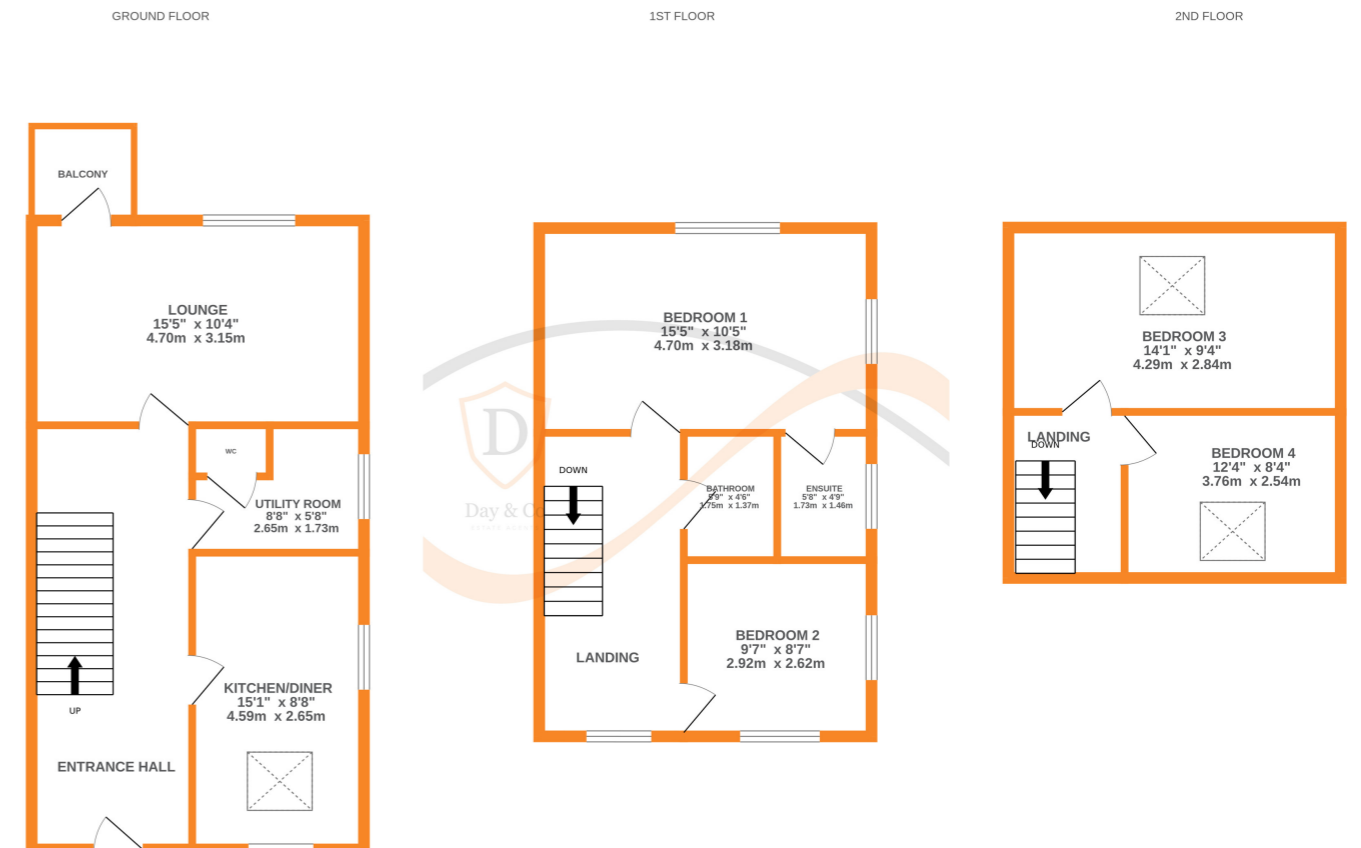
- Fully Refurbished End Town House
- Extensive Tiered Gardens With Canal Side Outlook
- NO CHAIN

SUMMARY

****A FABULOUS FULLY REFURBISHED 4 BEDROOM (MASTER EN-SUITE) END TOWN HOUSE, POPULAR BROMLEY ROAD AREA OF BINGLEY WITH EXCELLENT ACCESS TO LOCAL AMENITIES!!**** Having modern fittings throughout, extensive tiered garden with canal side outlook - OFFERED FOR SALE WITH NO ONWARD CHAIN!! EPC rating is B.

FULL DESCRIPTION

Viewing is essential to fully appreciate this fully refurbished four bedroom (master en-suite) end town house situated in the popular Bromley Road area of Bingley with excellent access to the town centre and train station offering access to other local towns and cities including Leeds and Skipton. The property forms part of a former period residence and the well proportioned accommodation comprises of an entrance hall, the dining kitchen has an attractive range of modern base and wall mounted units, integrated appliances to include oven, hob, extractor fan, dishwasher, double glazed windows to side and rear and double glazed Velux window. There is a separate utility room with cloaks WC. The lounge measures approximately 15ft5 in length and has double glazed windows to front and side, a double glazed door leads to a balcony. To the first floor there are two bedrooms, the master having an en-suite shower room with shower cubicle, WC, wash hand basin. The house bathroom is on this level having a bath with shower over, WC, wash hand basin. To the second floor there are two further double bedrooms. Externally there is a rear paved area, extensive tiered gardens leading down to the canal, two under house storage rooms (room 1: 15'9" x 9'2") (room 2: 4'3" x 4'7"). EPC rating is B.



Whilst every attempt has been made to ensure the accuracy of the floorplan contained here, measurements of doors, windows, rooms and any other items are approximate and no responsibility is taken for any error, omission or mis-statement. This plan is for illustrative purposes only and should be used as such by any prospective purchaser. The services, systems and appliances shown have not been tested and no guarantee as to their operability or efficiency can be given.
Made with Metropix ©2024